

Chapter- 12:.....

Identification of Fabrics with Commercial Names

The fabric is made using various material and techniques. They are produced with different construction depending on the end usage of the fabric. They are identified by different names depending on methods by which they are manufactured, the place where they are actually made/ invented or by their fibre components. This chapter is like a glossary of various fabrics that are commercially available. It will visually help the student in identification of the fabric by market name. It will also enumerate its end use.

Batik Fabric

A fabric design technique of resist dyeing or printing in which desired areas are covered, painted or printed with the mix of bee wax and paraffin wax which acts like resist and then dyed. The wax help in resisting the dyes penetration, however in the process wax cracks through which some dyes solution gets penetrated and the interesting cracks effects are produced which is quite unique. (See image 64)

Bedford Cord

It is a corded cotton-like fabric with raised ridges in the lengthwise direction. Since the fabric has a high strength and a high durability, it is often used for upholstery, trousers and work clothes

Boucle Fabric

It is a woven fabric with small curls or loops that create a nubby surface. The fabric has a looped, knotted surface and is often used in sweater looks, vests and coats. (See image 68)

Broadcloth

It is a plain weave tightly woven fabric that is usually made from 100% cotton or a cotton blend. It is used as dress materials.

Brocaded Fabric

A heavy jacquard fabric with an all-over raised pattern or floral design. Appropriate for saris, upholstery, draperies, handbags and eveningwear. Banarasi brocaded saris in India are very famous. (See image 56)

Calico Fabric

It is a tightly-woven cotton type fabric with an all-over print, usually a small floral pattern on a



contrasting background color. Common end use includes dresses, aprons, and quilts. (See Image 55)

Cambric Fabric

Cambric is a fine thin white linen fabric, woven using plain weave

Canvas Fabric

Canvas is a strong, durable, closely plain weave woven cotton fabric.

Chambray

Chambray is a plain woven fabric that can be made from cotton, silk, or manufactured fibers, but is most commonly cotton. It incorporates a colored warp (often blue) and white filling yarns. (See image 62)

Chiffon Fabric

Lightweight, extremely sheer and airy fabric, containing highly twisted fibers. It is Suitable for full pants, loose tops or dresses

Corduroy

It is a fabric, usually made of cotton or a cotton blend, utilizing a cut-pile weave construction. The "wale" indicates the number of cords in one inch. Suitable for jackets, pants and skirts. (See image 70)

Cotton Fabric

Cotton is a white vegetable fibre grown in warmer climates in many parts of the world. Cotton has been used to produce many types of fabric for hundreds of years. Cotton fabric feels good against the skin regardless of the temperature or the humidity and is therefore in great demand by the consumer. May be made into solid plain colour, strip or check cotton fabrics (See image 52, 72 & 73)

Crepe

It is used to describe all kinds of fabrics--wool, cotton, silk, rayon, synthetics and blends-that have a crinkle, crimped or grained surface.

Damask Fabric

A glossy jacquard-type fabric, the patterns are flat and reversible. Unlike jacquards, the fabric is all one color. It is suitable for draperies, curtains, bed and table linens.

Denim

It is a twill weave cotton fabric made from different coloured yarns (usually indigo) in the warp and white weft. Due to the twill construction, one colour predominates on the fabric surface. It is

suitable for trousers, jackets and skirts. The denims are usually prewashed for different effects. (See image 34)

Dobby Fabric

A Fabric made with an additional attachment to a loom wherein a decorative weave, characterized by small figures, usually geometric, that are woven into the fabric structure. (See image 48)

Double Cloth and Multi Layered Fabric

A fabric construction, in which two layered are woven on the loom at the same time, one on top of the other. In the weaving process, the two or more layers of woven fabric are held together using binder threads. The woven patterns in each layer of fabric can be similar or completely different. (See image 42 & 43, Panipat Double cloth see image 73)

Drill

Drill is Strong, medium- to heavyweight, warp-faced, twill-weave fabric. It is usually a 2/1 left-handed twill and piece dyed.

(See image 51)

Dupion Silk

It is a crisp fabric made from silk yarn which is reeled from waste cocoons. More than one cocoon is reeled together and hence a yarn with slubs on the surface is produced which is quite irregular. (See image 53)

Extra Warp and Extra Weft Design Fabric

Fabric woven on mainly plain ground with an additional yarns used in warp or weft direction to make large designs. Used in dress materials and saris. (See image 48 & 49)

Felted Fabric

It is a natural property of wool fibres. In presence of moisture, pressure and heat the scale of the wool fibres bond each other. It is a non-woven fabric made from wool, hair, or fur, and sometimes in combination with certain manufactured fibers, where the fibers are locked together. (See image 60)

Flannel

It is usually a 100% cotton fabric that has been brushed on one or both sides for softness. Typically used in baby cloth, shirts and sleepwear. (See image 69)

Fur Fabric

An artificial fur fabric made in the weaving or knitting having looks of a bird's fur or an animal hairy skin. (See image 61)



Gabardine

It is a worsted twill weave that is wrinkle resistant. Wool gabardine is the most common and is considered all season fabric for suits.

Gauze Fabric

A sheer, open-weave fabric usually cotton or silk. It is suitable for blouses, dresses and curtains. (See image 35)

Georgette Fabric

A drape able woven fabric created from highly twisted yarns creating a pebbly texture. It is semi-sheer and suitable for blouses, full pants and flowing dresses.

Gingham

It is a medium weight with a plain weave in plaid or check pattern. End use includes dresses, shirts, and curtains. (See image 65)

Herringbone

A variation of the twill weaves construction in which the twill is reversed, or broken, at regular intervals, producing a zigzag effect with clear cut line at the reversal point. (See image 26)

Honeycomb

It is one of the weaves wherein a structure just like the one created by honey bees are constructed. The fabric woven by this weave is used for towelling as it absorbs moistures. (See image 25)

Hound's Tooth Check Fabric

A fabric woven in 2:2 ratios of warp and weft using colour and weave effects. Mainly used for ladies jacketing, long coat and man' wear. (See image-24)

Ikat Fabric

It is a fabric, usually hand woven which has been tie-dyed in the yarns, prior to weaving. The pattern can range from simple little dots to single ikat (warp yarn is tie-dyed) to intricate double Ikat (where both the warp and weft yarn is tie-dyed). (See image 33)

Jacquard Fabric

Woven fabrics made using the Jacquard attachment on the loom. This attachment provides versatility in designs and permits individual control of each of the warp yarns. Thus, fabrics of almost any type or complexity can be made. Examples are Brocade and Damask fabrics. (See image 54, 56, 57 & Panipat Jacquard Double cloth see image 73)

Leno Fabrics

It is a fabric having net like structure. The warp yarns are inter-crossed with the weft, during the weaving process. It is made in various materials and can be used in the dresses. Mosquito nets are made by this weave (See image 59)

Madras Check Fabrics

It is lightweight plain or simple twill weave cotton fabric with a striped, plaid, or checked pattern. True madras checks bleeds when washed. This type of fabric is usually exported from India and once had in great demand and was used as lungis. Nowadays, Madras checks are made with good quality cotton is used in men's and women's shirts and dresses. (See image 67)

Moss Crepe

A satin based crepe fabric, light weight and very smooth, having good draping quality used for dress materials. (See image 41)

Muslin Fabric

An inexpensive, medium weight, plain weave, low count (less than 160 threads per square inch) cotton sheeting fabric. In its unfinished form, it is commonly used in fashion design to make trial garments for preliminary fit. (See image 45)

Net Fabric

It refers to any open-construction fabric which it is usually created by weaving, knitting, knotting method. (See image 31)

Organdie Fabric

A stiffened, sheer, lightweight plain weave fabric, usually cotton or polyester. (See image 40)

Organza Fabric

A crisp, sheer, lightweight plain weave fabric, with a medium to high yarn count, made of silk, rayon, nylon, or polyester. (See image 32)

Oxford Fabric

A fine, soft, lightweight woven cotton or blended with manufactured fibers in a 2 x 1 basket weave variation of the plain weave construction. The fabric is used primarily in shirting.

Pile Fabric

A fabric woven with the formation projecting surface with yarns either in the Loop form and cut form is known as pile fabric. They are produced both manually and by machine. Velvet and Terry towel are the best example of cut pile fabric. (See image 29)

Piqué Fabric

It is a medium-weight cotton or cotton blend fabric with a pebbly weave that looks almost like a check. Pique is suitable for vests, jackets and fitted blouses. It is also used in children's clothes.

Poplin Fabric

A fabric made using a rib variation of the plain weave. The construction is characterized by having a slight ridge effect in one direction. Poplin is usually associated with casual clothing.

Quilting

A fabric construction in which a layer of down or fibre fill is placed between two layers of fabric, and then held in place by stitching by hand or by machine or sealing in a regular, consistent, all-over pattern on the goods. (See image 47)

Sateen Fabric

The fabric has a soft, smooth hand and a gentle, subtle luster; it is a weft dominant structure. Sateen fabrics are often used for draperies and upholstery. (See image 46)

Satin Fabric

With a lustrous, shiny surface, drape ability depends on fiber content. Silk and rayon satins have the best stitch results. It is a warp predominant structure. (See image 36 & 37)

Seersucker Fabric

It is a fabric with a woven pucker. This fabric is traditionally cotton, but can be polyester. Suitable for shirts, casual slacks and children's clothing. (See image 28 & 44)

Scottish Check

A fabric traditionally woven in wool but now made in cotton as well as in other materials too. The design is largely check fabric having red, white and black combination with similar patterns in warp and weft direction, hence producing very balanced check fabrics. (See image 66)

Tapestry Fabric

It is a heavy, often hand-woven, ribbed fabric, featuring an elaborate design depicting a historical or current pictorial display. It is a weft dominant structure with warp that is visible on the back. End use includes wall hangings and upholstery. (See image 58)

Tarpaulin

A waterproofed canvas sometimes made of nylon or other manmade fiber.

Terry Cloth

Unclipped, looped pile, 100% cotton terry cloth is highly absorbent. French Terry has a looped reverse and a knit-like face. (See image 29)

Tissue Fabric

Light weight, sheer plain woven fabric made by using silk, fine cotton and Lurex yarns. It is used for curtains and dress material. (See image 38 & 39)

Tweed

It is a medium to heavy weight, fluffy, woollen, twill weave fabric containing coloured slubbed yarns. Common end use includes coats and suits. (See image 50)

Twill Fabric

It is a fabric that shows distinct diagonal lines on the face (e.g., tweed, denim, gabardine). (See image 50 & 51)

Velvet

With a longer pile, velvet is the most luxurious fabric. Stretch velvet has some Lycra, It can be machine washed and will not create a shine in the seat or elbows. Appropriate for tops, skirts and fuller pants.

Velveteen

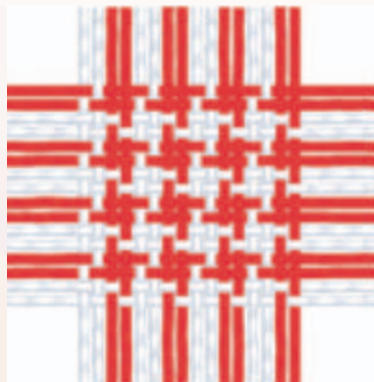
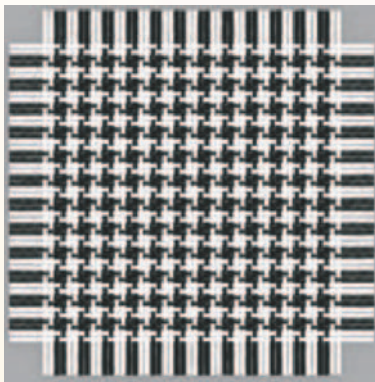
A cotton or cotton blended fabric with a short, dense pile. It lacks the sheen and drape of velvet. It is perfect for drapes and home décor items as well as trousers, jackets and skirts.

Voile Fabric

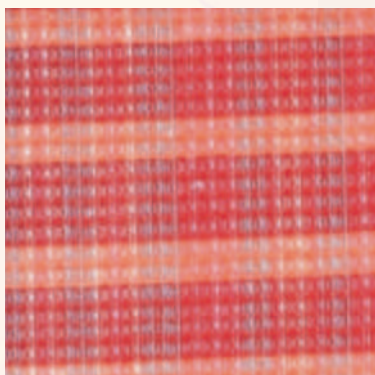
A crisp, lightweight, plain weave cotton-like fabric, it is appropriate for blouses and dresses. (See image 27)

Warp Rib:

Derivatives of plain weave structure wherein the rib formation is in the weft direction. Depending upon its weight and construction it is used for home fashion and apparel. (See image 30)



Hound's tooth effect fabric, mainly used for jacketing, blazers and long coat fabric
Image 24



Honeycomb woven fabric structure
Image 25



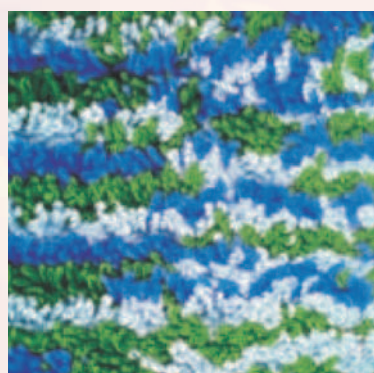
Herring bone woven fabric-
a derivatives
of twill woven structure
Image 26



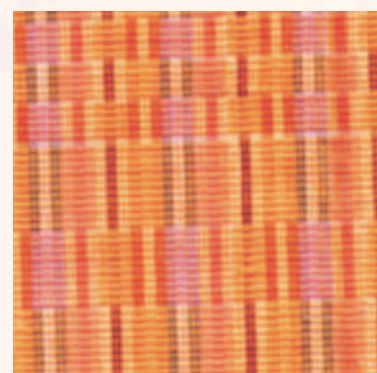
Solid piece dyed Plain
woven cotton voile fabrics
Image 27



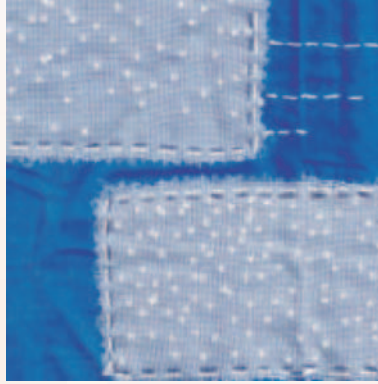
Seersucker Plain weave
cotton fabrics
Image 28



Cut Pile woven fabric
Image 29



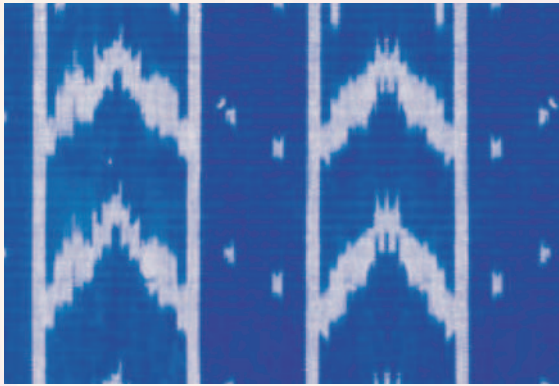
Warp rib, rib formation is in
the weft direction
Image 30



Net fabric used over a fabric for
ornamentation
Image 31



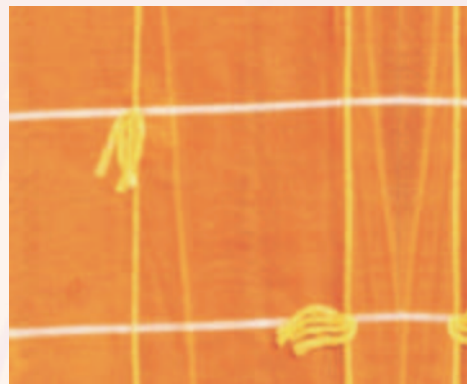
Organza fabric used along with
other fabric for ornamentation
Image 32



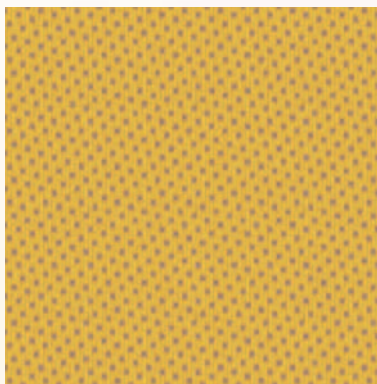
Ikat fabrics: at the top single ikat made at Hyderabad wherein only warp or weft is tie- dyed
and in the bottom double ikat produced at Sambhalpur (Odisha)
wherein both warp and weft is tie-dyed
Image 33



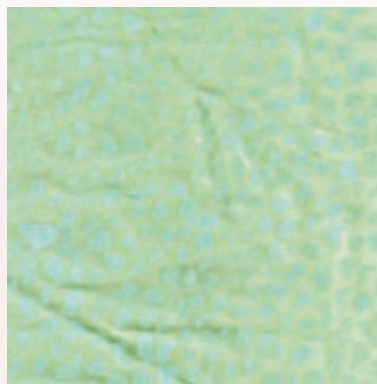
Denim usually having 3/1 twill woven with warp
dyed in indigo colour and the weft is off white, now
available in various shades of colour. Above the
denim is printed with rubber printing technique
Image 34



Gauze fabric in yarn dyed Cotton
Image 35



Satin (warp faced sateen)
fabric structure
Image 36



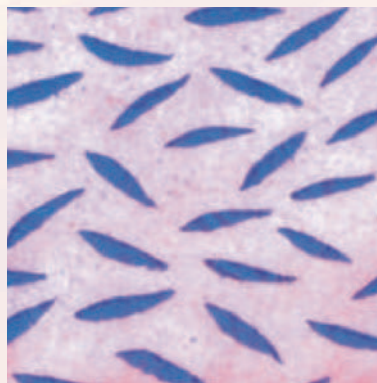
Printed Satin
(warp faced sateen) fabric
Image 37



Printed tissue
Image 38



Plain Lurex tissue
Image 39



Printed organdy
Image 40



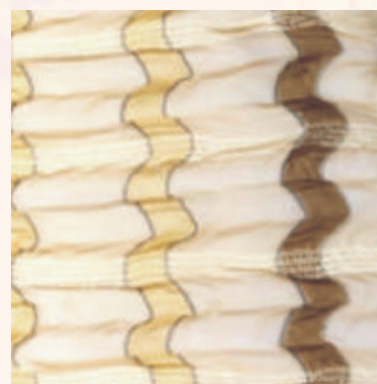
Digital printed moss crepe
Image 41



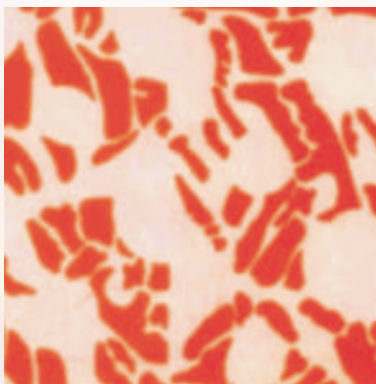
Double Cloth Fabric
Image 42



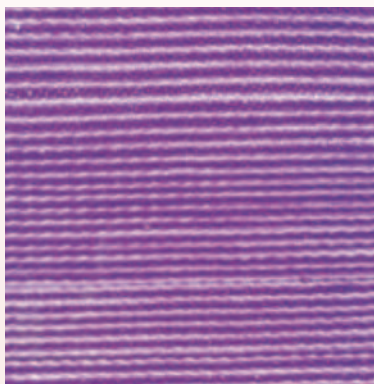
Multi layered (3 layered) fabric
Image 43



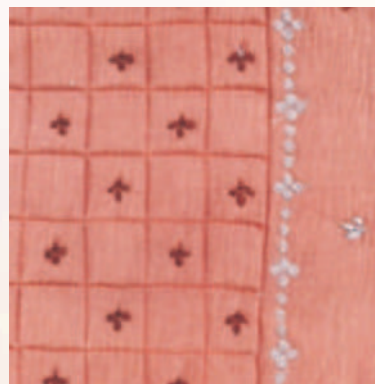
Seersucker Organza
Image 44



Printed Muslin fabric
Image 45



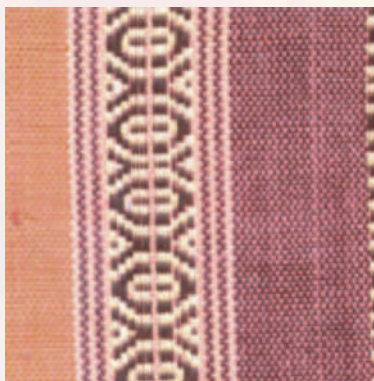
Sateen or weft satin
Image 46



Machine quilted fabric
Image 47



Extra weft design on a fabric
Image 48



Extra warp design made
using dobby on a fabric
Image 49



Tweed a Twill weave on a
trouser fabric
Image 50



Drill- A twill weave used as
trouser or Jacketing fabric
Image 51



Cotton check fabric
Image 52



Dupion silk fabric
Image 53



Jacquard woven fabric
Image 54



Calico fabric
Image 55



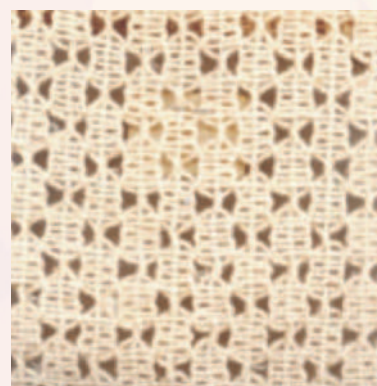
Jacquard woven brocade fabric
Image 56



Aamir Khan: Electronic
Jacquard woven fabric
Image 57



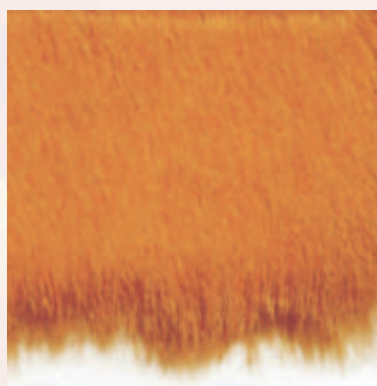
Simple Tapestry weave
Image 58



Leno weave
Image 59



Felted woolen fabric
Image 60



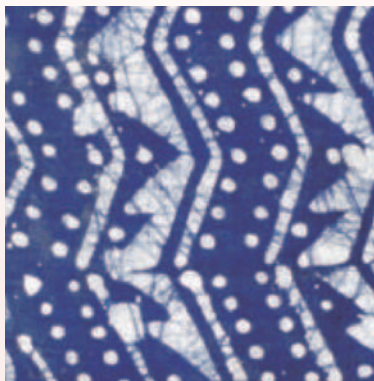
Artificial Furfabric
Image 61



Chambray fabric
Image 62



Dobby fabrics with Small
buties made on it
Image 63



Batik printed fabric
Image 64



Gingham check fabrics
Image 65



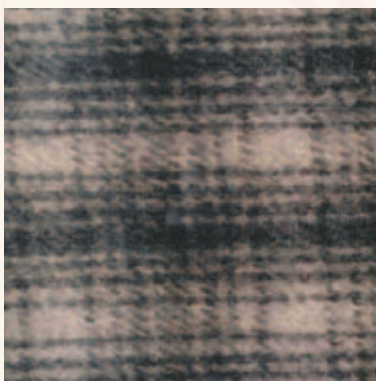
Scottish check fabric
Image 66



Madras check fabrics
Image 67



Boucle fabric
Image 68



Flannel Fabric
Image 69



Corduroy fabric used
for trousers
Image 70



Panipat Double cloth
made on Jacquard
Image 71



Cotton stripe fabric
Image 72



Cotton Check fabric
Image 73