

CONTROL & COORDINATION

5 CHAPTER

CONTENTS

- **Control**
- **Coordination**
- **Nervous system of animals**
- **Structure of nerve cell**
- **Sense organ**
- **Endocrine system**
- **Plant coordination**

➤ **CONTROL**

Control is the power of restrain & regulation by which a process can be started, showed down or stopped.

➤ **COORDINATION**

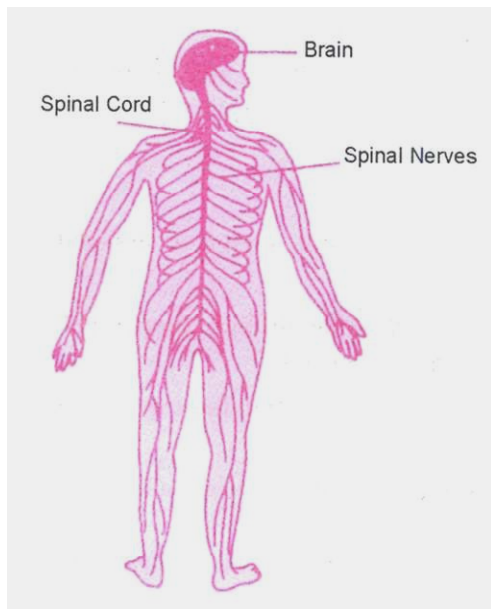
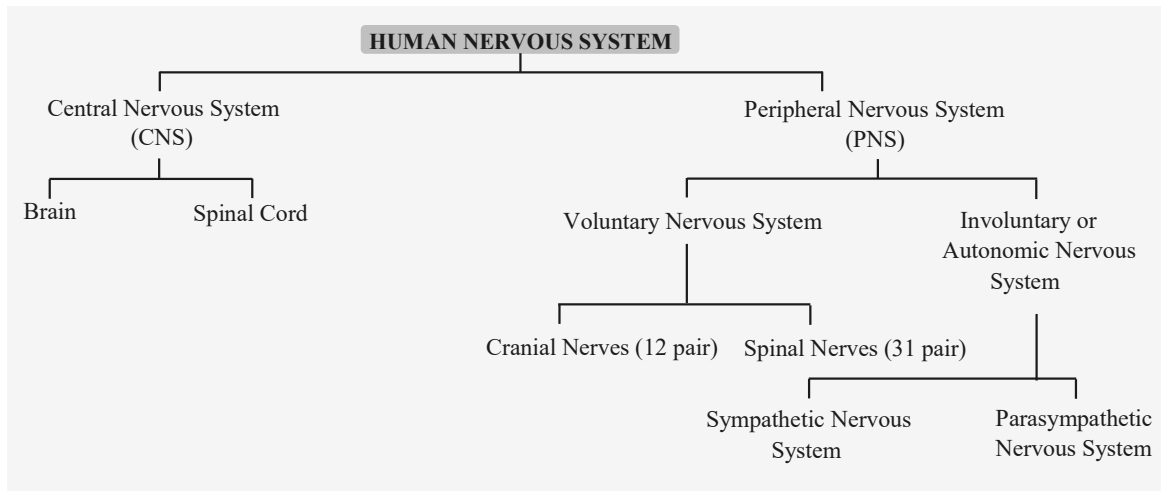
Coordination is orderly working of different but inter related parts to perform one or more activities very smoothly.

There are 2 modes of control & coordination, chemical & nervous. Plant do not have a nervous system. They possess only chemical controls & coordination.

Animals have both chemical & nervous control & coordination.

➤ **NERVOUS SYSTEM OF ANIMALS**

It is the system of nervous organs, nerves & neurons that form a network throughout the body for conducting information via electrical impulses so as to coordinate & control activities of different parts as well as provide appropriate response to both internal & external stimuli.



◆ Reflex action :

- A reflex may be defined as an immediate and rapid response given without our awareness by an effector organ on the arrival of some external or internal stimulus. Reflex actions may be of two types :

◆ Simple Reflex :

- It is an in born, inherited or unlearned response to a stimulus Ex. **Nest budding.**

◆ Conditioned Reflex :

- It is the response acquired as a result of training or experience to a stimulus that originally failed to evoke the reaction. Father is **I.P. Pavlov** Ex. Writing, Driving etc.

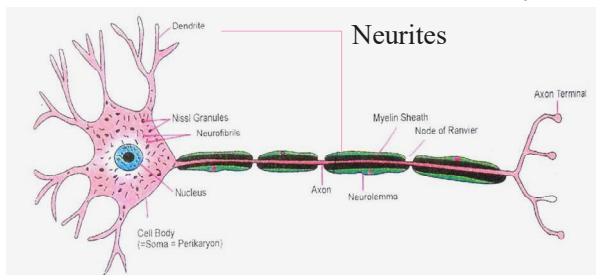
➤ SENSE ORGAN

Every organism has little or more awareness to the different factors of the environment mainly due to the presence of certain sensitive structures in the body called sense organs or receptors. The sense organs are generally destined to receive only one kind of stimulus and not any other. The most common receptors are

- **Photoreceptor** : Eye
- **Phonoreceptor** : Ear
- **Guastatoreceptor** : Tongue
- **Tangoreceptor** : Skin
- **Olfactoreceptor** : Nose

◆ Structure of nerve cell :

- Neuron or nerve cell is a structural and functional unit of nervous system that is specialised to receive, conduct and transmit impulses. It is very long, sometimes reaching 90-100 cm. A neuron has three parts— cell body, dendrites and axon. The term neurites is used for both dendrites and axon. |



HUMAN BRAIN

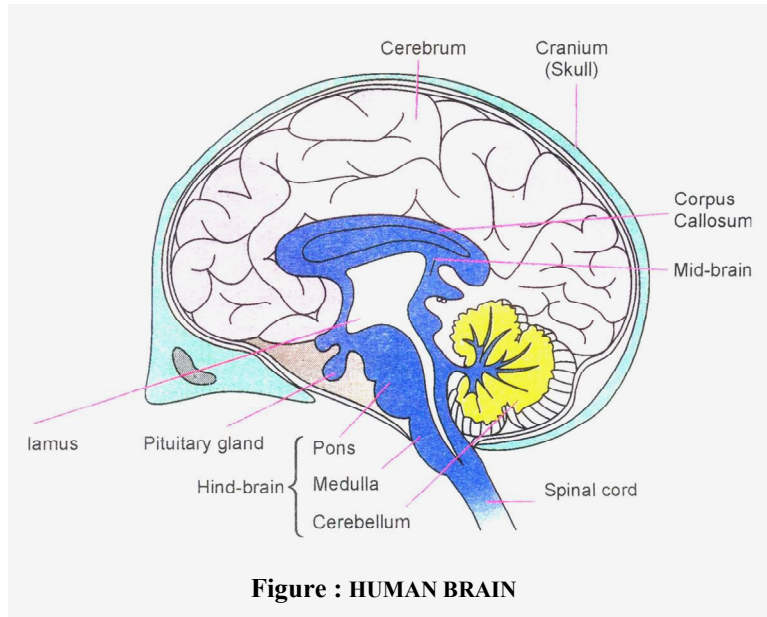
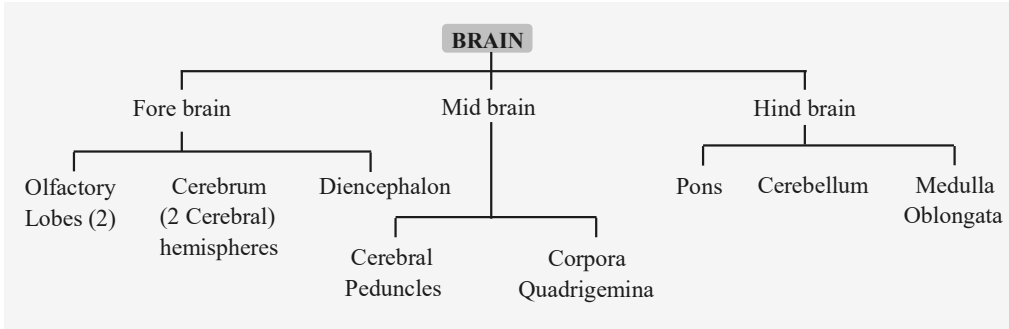


Figure : HUMAN BRAIN

ENDOCRINE SYSTEM

Glands	Secretion	Functions
1. Pituitary		
(A) Adenohypophysis	(i) GH or STH	Controls growth of somatic cells influences protein, carbohydrate and metabolisms
	(ii) TSH	Regulates the growth of thyroid gland and secretion of thyroxine
	(iii) ACTH	Stimulates adrenal cortex to grow and secrete its hormones
	(iv) FSH	Stimulates growth of ovarian follicles in ovary of female and controls spermatogenesis in males
	(v) ICSH or LH	Stimulates ovary to produce estrogen in female and testis to produce androgens in male
	(vi) Prolactine	Controls development of mammary glands and stimulates corpus luteum to secrete progesterone
	(vii) MSH	Stimulate melanocytes
(B) Neuro hypophysis	(i) Oxytocin	Controls uterine contraction during parturition, stimulates lactation to increase milk secretion

2. Thyroid		
	(i) Thyroxine	Controls metabolism
	(ii) Thyrocalcitonin	Deposit calcium over bones.
3. Parathyroid	PTH	Maintain blood calcium.
4. Adrenal		
(A) Cortex	Mineralocorticoid (Aldosterone)	Salt retention
(B) Medulla	Adrenaline	Emergency hormone
5. Gonads		
(A) Testis (Cells of leydig)	Androgens (Testosteron)	Controls spermatogenesis and development of secondary sexual charaters of males
(B) Ovaries		
(a) Graafian follicle	(i) Estrogen	Development of female sexual organs.
(b) Corpus luteum	(i) Progesterone	Maintain pregnancy
6. Thymus	Thymosin	Strenthens immune system
7. Pineal	Melatonin	Control skin colour.



COORDINATION IN PLANTS

◆ Plant Hormones:

◆ Auxins

Auxions take part in a number of plants processes. Some are as follow :

- Auxin Promote apical daninance.
- Auxin participates in molecular reaction
- Affects osmotic pressure by increasing solutes
- Affects enzyme action
- Affects nucleic acid activities
- Stimulates respiration
- Promotes root formation
- Helps in inhibition of leaf and fruit abscission

◆ Gibberellins :

- These hormones were first identified in studies of a disease of rice in Japan, the bakanal (foolish seedling) disease caused by Gibberella fujikuroi.
- These are second important growth hormones found in plants. Normally gibberellins causes increased growth, especially in height of stem. So gibberelline are defined as the growth hormones which causes cell elongations.

◆ Cytokinins :

- Cytokinins are defined as compounds having a highly specific hydrophilic group or adenine and one nonspecific lipophilic group.
- Name of some cytokinins are :-
- Kinetin, dihydrozeation, methylthiozeation and riboxylzeatin.

◆ Absciscic Acid (ABA) :

- Acts as growth inhibitor and induces dormancy of buds towards the approach of winter.
- **Inhibition of cambium activity** - Towards the approach of winter, the activity of combium is inhibited due to the formation of abscisic acid.
- **Abscission** - Absciscic acid promotes discission of flowers and fruits.
- **Senescence** - It stimulates senescence of leaves.
- **Closure of stomata** - The normal causes closure of stomata (by inhibiting K^+ uptake.
- **Inhibition of germination** - Absciscic acid inhibits sprouting of cereal grains.
- **Resistance** - Absciscic acid increases resistance of plant to cold.

- **Flowering** - ABA delays flowering in long day plants.
- **Tubarization in potato** - ABA helps in tuber formation in potato.
- **Rootning** - ABA promotes root initiation in stem cuttings of some plants e.g. Ivy, Poinsettia.

◆ **Ethylene ($\text{CH}_2 = \text{CH}_2$) :**

- Functions of ethylene are -
- **Transverse growth** - Stimulates transverse growth so that stem looks swollen.
- **Inhibition of geotropism** - Ethylene nullifies geotropism.
- **Fruit ripening** - Ethylene is a ripening agent, such fruits as apple, banana, mango, citrus etc, Ethylene is used for artificial ripening of these fruits.
- **Apical dominance** - Ethylene inhibits the growth lateral buds and thus cause apical dominance.
- **Root initiation** - In low concentration, ethylene stimulates root initiations.
- **Abscission** - Ethylene accelerates abscission of leaves, flowers and fruits.
- **Senescence** - Ethylene is associated with the process of senescence (ageing) of leaves and flowers.
- **Breaking of dormancy** - Ethylene breaks dormancy of storage organs

◆ **Uses of Ethylene :**

- **Ripening of Fruits** - Ethylene lamps are used for colour development and ripening of certain fleshy fruits (e.g.- apple, banana, mango etc)

EXERCISE # 1

A. Single Choice Type Questions

- Q.1** Olfactorceptors occur in -
(A) Nasal cavity
(B) Buccal cavity
(C) Lungs
(D) Skin
- Q.2** Photoreceptors are present in -
(A) Eyes (B) Mouth
(C) Ears (D) Brain
- Q.3** Spinal cord is part of -
(A) Autonomic nervous system
(B) Voluntary peripheral nervous system
(C) Involuntary peripheral system
(D) Central nervous system
- Q.4** Cerebellum is part of -
(A) Mid brain
(B) Fore brain
(C) Hind brain
(D) Peripheral nervous system
- Q.5** Number of cranial nerves is -
(A) 36 (B) 24
(C) 18 (D) 12
- Q.6** In human, number of spinal nerves is -
(A) 31 pairs (B) 32 pairs
(C) 33 pairs (D) 36 pairs
- Q.7** Phototropism is caused by differential distribution of -
(A) IAA (B) Kinetin
(C) Gibberellin (D) Absciscic acid
- Q.8** A natural growth inhibitor is -
(A) IAA (B) Gibberellin
(C) Cytokinin (D) Absciscic acid
- Q.9** Artificial ripening of fruits is carried out by -
(A) Auxin (B) Kinetin
(C) Ethylene (D) ABA
- Q.10** Hormone stimulating internodal length in plants is -
(A) Auxin (B) Gibberellin
(C) Cytokinin (D) ABA
- Q.11** Which one is male hormone -
(A) Estrogen (B) Adrenaline
(C) Testosterone (D) Insulin
- Q.12** Structural and functional unit of nervous system is -
(A) Nephron (B) Neuron
(C) Dendrite (D) Cyton
- Q.13** Emergency hormone is -
(A) Thyroxin
(B) Growth hormone
(C) Adrenalin
(D) Insuline
- Q.14** Select the correct match from the following -
(A) Thyroxin : Ovary
(B) Growth hormone : Pituitary
(C) Insuline : Thyroid
(D) Testosterone : Testis
- Q.15** Which of the following stimulate the tuberization in potato -
(A) Ethylene (B) Auxin
(C) Gibberelin (D) Cytokinin

EXERCISE # 2

A. Very Short Answer Type Questions

- Q.1** Write the function of hormone thyroxine in our body.
- Q.2** Name the part of hind brain which takes part in regulation of respiration.
- Q.3** Which hormone helps in lowering the level of blood Calcium in human beings.
- Q.4** Which hormone is responsible for the development of moustache and beard in man ?
- Q.5** Which type of glands in human body secrete hormones ?
- Q.6** Name the structural and functional units of human nervous system.
- Q.7** What is neuron ?
- Q.8** Name the largest cell present in human body.
- Q.9** What is the function of the hormone secreted by the endocrine gland pituitary ?

A. Short Answer Type Questions

- Q.10** Name hormones produced by Neurohypophysis.
- Q.11** Name four hormones produced by pituitary gland with function.
- Q.12** Why is pituitary gland called master gland ?
- Q.13** What is the role of oxytocin ?
- Q.14** Which hormone is called emergency hormone ?
- Q.15** Name any four receptor along with the organ in which they occur ?

Q.16 Where is medulla oblongata ? situates ?

Q.17 Write a note on ABA.

Q.18 What is reflex action ?

C. Long Answer Type Questions

Q.19 Draw a labelled diagram of brain.

Q.20 Describe the structure of neuron.

Q.21 What is reflex action ? Describe the types of reflex action with a suitable diagram.