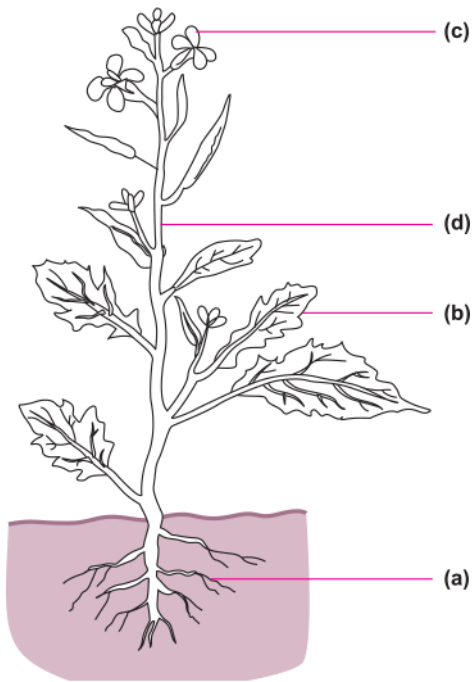


Long Answer Questions

Q.1. Read the function of parts of a plant given here:

- (a) Fixes plant to the soil
- (b) Prepares starch
- (c) Takes part in reproduction
- (d) Supports branches and bears flowers

In the given diagram, write the names of the parts whose functions you have just read at the appropriate space.



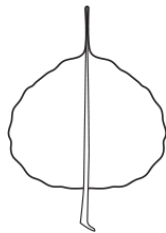
Ans.

- (a) Root
- (b) Leaf
- (c) Flower
- (d) Stem

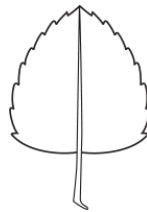
Q.2.



Grass



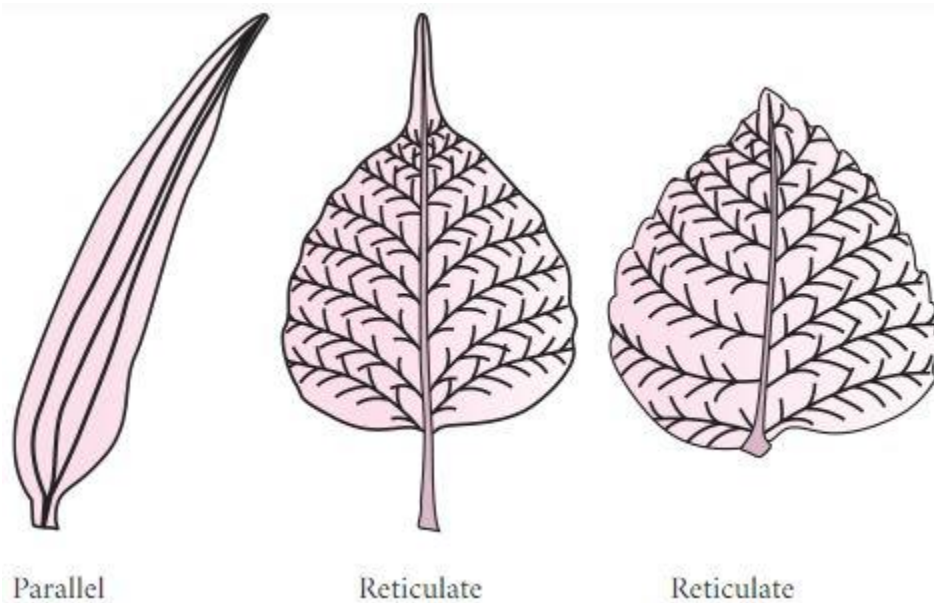
Peepal



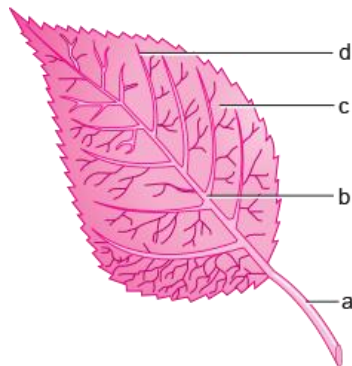
China rose

[NCERT Exemplar]

Ans.



Q.3. Observe the figure given below and attempt the questions that follow it.



[NCERT Exemplar]

(i) Label the parts (a), (b), (c) and (d) in the diagram.

Ans.

- (a)** Petiole,
- (b)** Midrib,
- (c)** Lamina,
- (d)** Vein

(ii) What type of venation does the leaf has?

Ans. Reticulate venation

(iii) What type of venation is seen in grass leaves?

Ans. Parallel venation

Q.4. Observe the picture of an activity given below carried out with leaves of plants and polythene bag.



Now answer the following:

(i) Which process is demonstrated in the activity?

Ans. Transpiration

(ii) When will this activity show better results—on a bright sunny day or a cloudy day?

Ans. On a bright sunny day.

(iii) What will you observe in the polythene bag after a few hours of setting up the activity?
[NCERT Exemplar]

Ans. Small drops of water inside the polythene cover.

(iv) Mention any one precaution you must take while performing this activity.

Ans. The set-up must be airtight/polythene bag must be dry/the twig must be fresh with 10-12 leaves. (*Any one*)

Q.5. Identify the wrong statements and correct them. [NCERT Exemplar]

(i) Anther is a part of the pistil.

Ans. Wrong— Anther is a part of the stamen.

(ii) The visible parts of a bud are the petals.

Ans. Wrong— The visible parts of a bud are the sepals.

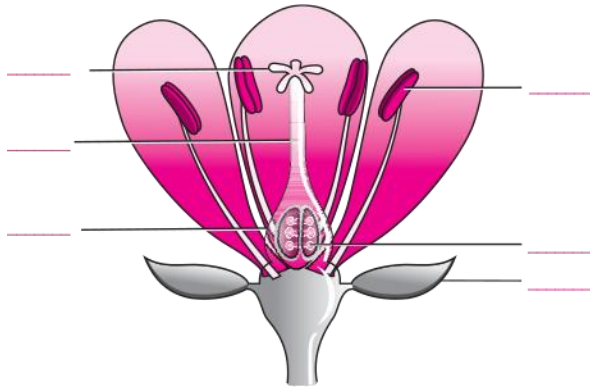
(iii) Lateral roots are present in a tap root.

Ans. Correct

(iv) Leaves perform the function of transpiration only.

Ans. Wrong– Leaves also perform photosynthesis.

Q.6. Given below is a diagram of a flower. Study it carefully and label the parts as indicated.



Ans.

