
CBSE Class 3 Mathematics
NCERT Solutions
Chapter – 4
LONG AND SHORT

PAGE 46

1. Measure your arm and your mother's arm. What is the difference.

Ans. Mother's arm is bigger than that of mine.

PAGE 47

How Many

2. In how many steps will Dorji cross the road?

Ans. Dorji may cross the road in 5 steps.

3. How many cups can be placed in a line on the table?

Ans. 10 cups can be placed in a line on this table.

4. How many pots can be placed to reach the tree branch?

Ans. 5 pots can be placed to reach the tree branch.

5. How many shirts can be hung on this wire?

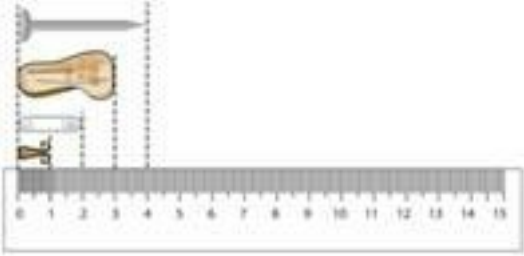
Ans. 4 shirts can be hung on this wire.

PAGE 48

6. The leaf is 4 centimetres long. The wax colour is 7 centimetres long. Now, look at a scale that you find in a geometry box. How many centimetres does it have?

Ans. 15 centimetres.

7. The small scale that you mostly use in school is like this one.



Is it easier to start measuring from the 0 mark? Look at this things drawn near the scale and find out their lengths.

(a) What are the little lines on the scale used for?

Ans. The little lines on the scale are used to measure short objects.

(b) Look for thing that are

Look for things that are

About 10 centimetres long

Between 10 and 20 centimetres long

Less than 1 cm long

Ans. The list of thing having lengths.

About 10 centimetres are:

Screwdriver, spanner, top, soapcake, bedge.

Between 10 and 20 centimetres are:

Electric iron, frock, spoon, bottle, rolling pin.

Less than 1 cm long:

Peas, Beans, termite, ant, nail.

PAGE 50

8. Which is longer? Thumb or little finger?

Ans. Thumb is longer than little finger.

Think

9. How will you know the number of centimetres if you measure with a rope, shoe-string, thread etc.?

Ans. The number of centimetres can be known on comparing the portion of a rope, shoe-string, thread etc. used for measuring with the scale.

PAGE 52

Gibli And The Grains

10. Ant Gibli has to reach the grains. She is looking for the shortest road. Can you tell her which is the shortest?

Ans. Road B is the shortest road.

11. Can you draw a road shorter than these? What is the length of that road?

Ans. Yes, a road shorter to the given road can be drawn and its length will be 11.5 cm.

12.

	My measurement	My friend's measurement
Nose	3 centimetres	3 centimetres
Around the wrist	12 centimetres	11 centimetres
Around the head	36 centimetres	35 centimetres

Ear	5 centimetres	5 centimetres
Hand	12 centimetres	11 centimetres

Compare your measurement with your friends.

(a) Who has the biggest head and who has the smallest head?

Ans. Anshul, Dheeraj.

(b) Who has the longest head (from middle finger wrist)?

Ans. Amina.

(c) Which is longer? Your ear or your nose?

Ans. Ear.

(d) Is any of your nails more than 1 centimetre long?

Ans. Yes.

PAGE 56

Centimeters Or Metres?

13. Which of these will be in centimetres and which will be in metres?

(a) Width of a computer screen.

Ans. Centimetres.

(b) Length of a Pagdi worn by Sikhs.

Ans. Metres.

(c) Height of a 1 year old child.

Ans. Centimetres.

(d) Length of a banana.

Ans. Centimetres.

(e) Waist of an elephant.

Ans. Metres.

(f) Height of a sugarcane.

Ans. Metres.

(g) Depth of a wall.

Ans. In metres.

(h) Height of your mother.

Ans. Centimetres.

(i) Distance from school to home.

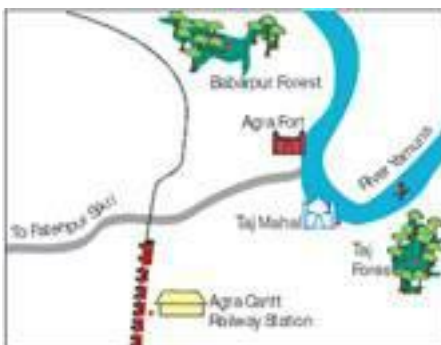
Ans. Metres.

(j) Length of your father's arm.

Ans. Centimetres.

PAGE 57

14.



Agra Cantt. Railway Station to Taj Mahal – 5 km

Taj Mahal to Agra Fort – 2km

Agra Fort to Fatehpur Sikri – 40 km

(a) Which is farthest from Agra Cantt. Railway Station – Taj Mahal or Fatehpur Sikri?

Ans. Fatehpur Sikri is farther.

(b) Which of these is nearer to the railway line:

Babarpur forest or Taj forest?

Agra Fort or Taj Mahal?

Ans. Babarpur forest is nearer. Agra fort is nearer.

(c) Taj Mahal or the Railway Station?

Ans. Taj Mahal is closer.

PAGE 58

15. The Long Tail Competition

The animals in this picture had a competition. The animal who had the longest price longest tail won a prize. Now who do you think won the first prize and who won the second? Just guess the length of the longest tail.



Ans. Monkey won the first prize and cow won the second prize. Longest tail is about 1 metre long.