

IBPS BANK PO/MT CWE

(Held on : 17.06.2012)

REASONING

Directions (1-4) : Study the following information carefully and answer the given questions :

A word and number arrangement machine when given an input line of words and numbers rearranges them following a particular rule in each step. The following is an illustration of input and rearrangement. (All the numbers are two digit numbers).

Input tall 48 13 rise alt 99 76
 32 wise jar high 28 56
 barn

Step I 13 tall 48 rise 99 76 32
 wise jar high 28 56 barn
 alt

Step II 28 13 tall 48 rise 99 76
 32 wise jar high 56 alt
 barn

Step III : 32 28 13 tall 48 rise 99
 76 wise jar 56 alt barn
 high

Step IV : 48 32 28 13 tall rise 99
 76 wise 56 alt barn high
 jar

Step V 56 48 32 28 13 tall 99
 76 wise alt barn high jar
 rise

Step VI : 76 56 48 32 28 13 99
 wise alt barn high jar
 rise tall

Step VII: 99 76 56 48 32 28 13 alt
 barn high jar rise tall
 wise

and Step VII is the last step of the above input, as the desired arrangement is obtained.

As per the rules followed in the above steps, find out in each of the following questions the appropriate step for the given input.

Input : 84 why sit 14 32 not best ink feet 51 27 vain 68 92

(All the numbers are two digit numbers).

1. Which step number is the following output?
32 27 14 84 why sit not 51 vain
92 68 feet best ink
(1) Step V (2) Step VI
(3) Step IV (4) Step III
(5) There is no such step
 2. Which word/number would be at 5th position from the right in Step V ?
(1) 14 (2) 92
(3) feet (4) best
(5) why
 3. How many elements (words or numbers) are there between 'feet' and '32' as they appear in the last step of the output?
(1) One (2) Three
(3) Four (4) Five
(5) Seven
 4. Which of the following represents the position of 'why' in the fourth step ?
(1) Eighth from the left
(2) Fifth from the right
(3) Sixth from the left
(4) Fifth from the left
(5) Seventh from the left
- Directions (5-11) :** Study the following information carefully and answer the given questions :
- A, B, C, D, E, F, G and H are sitting around a circle facing the centre but not necessarily in the same order.
- B sits second to left of H's husband. No female is an immediate neighbour of B.
 - D's daughter sits second to right of F. F is the sister of G. F is not an immediate neighbour of H's husband.
 - Only one person sits between A and F. A is the father of G. H's brother D sits to the immediate left of H's mother. Only one person sits between H's mother and E.
 - Only one person sits between H and G. G is the mother of C. G is not an immediate neighbour of E.
5. What is position of A with respect to his mother-in-law?
(1) Immediate left
(2) Third to the right
(3) Third to the left
(3) Second to the right
(5) Fourth to the left
 6. Who amongst the following is D's daughter ?
(1) B (2) C
(3) E (4) G
(5) H
 7. What is the position of A with respect to his grandchild ?
(1) Immediate right
(2) Third to the right
(3) Third to the left
(4) Second to the left
(5) Fourth to the left
 8. How many people sit between G and her uncle?
(1) One (2) Two
(3) Three (4) Four
(5) More than four
 9. Four of the following five are alike in a certain way based on the given information and so form a group. Which is the one that **does not** belong to that group?
(1) F (2) C
(3) E (4) H
(5) G
 10. Which of the following is **true** with respect to the given seating arrangement ?
(1) C is the cousin of E
(2) H and H's husband are immediate neighbours of each other
(3) No female is an immediate neighbour of C
(4) H sits third to left of her daughter
(5) B is the mother of H

11. Who sits to the immediate left of C ?

- (1) F's grandmother
- (2) G's son
- (3) D's mother-in-law
- (4) A
- (5) G

Directions (12-18) : In each group of questions below are two/three statements followed by two conclusions numbered I and II. You have to take the given statements to be true even if they seem to be at variance from commonly known facts and then decide which of the given conclusions logically follows from the two/three statements disregarding commonly known facts.

Give answer (1) if only conclusion I follows;

Give answer (2) if only conclusion II follows;

Give answer (3) if either conclusion I or conclusion II follows;

Give answer (4) if neither conclusion I nor conclusion II follows;

Give answer (5) if both conclusion I and conclusion II follow.

12. Statements :

- Some exams are tests.
- No exam is a question.

Conclusions :

- I. No question is a test.
- II. Some tests are definitely not exams.

(13 - 14) :

Statements :

- All forces are energies.
- All energies are powers.
- No power is heat.

13. Conclusions :

- I. Some forces are definitely not powers.
- II. No heat is force.

14. Conclusions :

- I. No energy is heat.
- II. Some forces being heat is a possibility.

(15 - 16) :

Statements :

- No note is a coin.
- Some coins are metals.
- All plastics are notes.

15. Conclusions :

- I. No coin is plastic.
- II. All plastics being metals is a possibility.

16. Conclusions :

- I. No metal is plastic.
- II. All notes are plastics.

17. Statements :

- Some symbols are figures.
- All symbols are graphics.
- No graphic is a picture.

Conclusions :

- I. Some graphics are figures.
- II. No symbol is a picture.

18. Statements :

- All vacancies are jobs.
- Some jobs are occupations.

Conclusions :

- I. All vacancies are occupations.
- II. All occupations being vacancies is a possibility.

Directions (19-21) : Study the following information carefully to answer the given questions :

Each of the six friends, A, B, C, D, E and F scored different marks in an examination. C scored more than only A and E. D scored less than only B. E did not score the least. The one who scored the third highest marks scored 81 marks. E scored 62 marks.

19. Which of the following could possibly be C's score ?

- (1) 70
- (2) 94
- (3) 86
- (4) 61
- (5) 81

20. Which of the following is true with respect to the given information ?

- (1) D's score was definitely less than 60
- (2) F scored the maximum marks
- (3) Only two people scored more than C
- (4) There is a possibility that B scored 79 marks
- (5) None is true

21. The person who scored the maximum, scored 13 marks more than F's marks. Which of the following can be D's score ?

- (1) 94
- (2) 60
- (3) 89
- (4) 78
- (5) 81

Directions (22-29) : Study the following information carefully to answer the given questions :

Eight persons from different Banks viz. UCO bank, Syndicate Bank, Canara Bank, PNB, Dena Bank, Oriental Bank of Commerce, Indian Bank and Bank of Maharashtra are sitting in two parallel rows containing four people each, in such a way that there is an equal distance between adjacent persons. In row-1 A, B, C and D are seated and all of them are facing south. In row-2 P, Q, R and S are seated and all of them are facing north. Therefore, in the given seating arrangement each member seated in a row faces another member of the other row. (All the information given above does not necessarily represent the order of seating as in the final arrangement)

● C sits second to right of the person from Bank of Maharashtra. R is an immediate neighbour of the person who faces the person from Bank of Maharashtra.

● Only one person sits between R and the person from PNB. Immediate neighbour of the person from PNB faces the person from Canara Bank.

● The person from UCO bank faces the person from Oriental Bank of Commerce. R is not from Oriental Bank of Commerce. P is not from PNB. P does not face the person from Bank of Maharashtra.

● Q faces the person from Dena Bank. The one who faces S sits to the immediate left of A.

● B does not sit at any of the extreme ends of the line. The person from Bank of Maharashtra does not face the person from Syndicate Bank.

22. Which of the following is true regarding A ?

- (1) The person from UCO Bank faces A
- (2) The person from Bank of Maharashtra is an immediate neighbour of A
- (3) A faces the person who sits second to right of R

- (4) A is from Oriental Bank of Commerce
(5) A sits at one of the extreme ends of the line
- 23.** Who is seated between R and the person from PNB ?
(1) The person from Oriental Bank of Commerce
(2) P (3) Q
(4) The person from Syndicate Bank
(5) S
- 24.** Who amongst the following sit at extreme ends of the rows ?
(1) D and the person from PNB
(2) The person from Indian Bank and UCO Bank
(3) The person from Dena Bank and P
(4) The person from Syndicate Bank and D
(5) C, Q
- 25.** Who amongst the following faces the person from Bank of Maharashtra ?
(1) The person from Indian Bank
(2) P (3) R
(4) The person from Syndicate Bank
(5) The person from Canara Bank
- 26.** P is related to Dena Bank in the same way as B is related to PNB based on the given arrangement. To who amongst the following is D related to, following the same pattern ?
(1) Syndicate Bank
(2) Canara Bank
(3) Bank of Maharashtra
(4) Indian Bank
(5) Oriental Bank of Commerce
- 27.** Four of the following five are alike in a certain way based on the given seating arrangement and thus form a group. Which is the one that does not belong to that group ?
(1) Canara Bank
(2) R
(3) Syndicate Bank
(4) Q
(5) Oriental Bank of Commerce
- 28.** Who amongst the following is from Syndicate Bank ?

- (1) C (2) R
(3) P (4) D
(5) A

29. C is from which of the following banks ?

- (1) Dena Bank
(2) Oriental Bank of Commerce
(3) UCO Bank
(4) Syndicate Bank
(5) Canara Bank

Directions (30 – 34) : Each of the questions below consists of a question and three statements numbered I, II and III given below it. You have to decide whether the data provided in the statements are sufficient to answer the question. Read all the three statements and

Give answer (1) if the data in Statements I and II are sufficient to answer the question, while the data in Statement III are not required to answer the question

Give answer (2) if the data in Statements I and III are sufficient to answer the question, while the data in Statement II are not required to answer the question

Give answer (3) if the data in Statements II and III are sufficient to answer the question, while the data in Statement I are not required to answer the question;

Give answer (4) if the data in either Statement I alone or Statement II alone or Statement III alone are sufficient to answer the question.

Give answer (5) if the data in all the Statements I, II and III together are necessary to answer the question.

30. Among six people P, Q, R, S, T and V each lives on a different floor of a six storey building having six floors numbered one to six (the ground floor is numbered 1, the floor above it, number 2 and so on and the topmost floor is numbered 6). Who lives on the topmost floor?

- (I) There is only one floor between the floors on which R and Q live. P lives on an even numbered floor.

(II) T does not live on an even numbered floor. Q lives on an even numbered floor. Q does not live on the topmost floor.

(III) S lives on an odd numbered floor. There are two floors between the floors on which S and P live. T lives on a floor immediately above R's floor.

31. There are six letters W, A, R, S, N and E. Is 'ANSWER' the word formed after performing the following operations using these six letters only ?

(I) E is placed fourth to the right of A. S is not placed immediately next to either A or E.

(II) R is placed immediately next (either left or right) to E. W is placed immediately next (either left or right) to S.

(III) Both N and W are placed immediately next to S. The word does not begin with R. A is not placed immediately next to W.

32. Point D is in which direction with respect to Point B ?

(I) Point A is to the west of Point B. Point C is to the north of Point B. Point D is to the south of Point C.

(II) Point G is to the south of Point D. Point G is 4m from Point B. Point D is 9m from Point B.

(III) Point A is to the west of Point B. Point B is exactly midway between Points A and E. Point F is to the south of Point E. Point D is to the west of Point F.

33. How is 'one' coded in the code language ?

(I) 'one of its kind' is coded as 'zo pi ko fe' and 'in kind and cash' is coded as 'ga to ru ko'

(II) 'its point for origin' is coded as 'ba le fe mi' and 'make a point clear' is coded as 'yu si mi de'

(III) 'make money and cash' is coded as 'to mi ru hy' and 'money of various kind' is coded as 'qu ko zo hy'

34. Are all the four friends viz. A, B, C and D who are sitting around a circular table, facing the centre ?

(I) B sits second to right of D. D faces the centre. C sits to immediate right of both B and D.

(II) A sits to immediate left of B. C is not an immediate neighbour of A. C sits to immediate right of D.

(III) D is an immediate neighbour of both A and C. B sits to the immediate left of A. C sits to the immediate right of B.

35. Read the following information carefully and answer the question which follows :

Farmers found using chemical fertilizers in the organic-farming area of their farms would be heavily fined.

Which of the following statements is an **assumption** implicit in the given statement? (An assumption is something supposed or taken for granted.)

(1) Chemical fertilisers harm the crop.

(2) A farm's area for organic and chemical farming is different.

(3) Farmers who do not use chemical fertilizers in the chemical farming area would be penalized as well.

(4) All farmers undertake both these kinds of farming (chemical as well as organic) in their farms.

(5) Organic fertilizers are banned in the area for chemical farming.

Directions (36 - 40) : Read the following information carefully and answer the questions which follow:

Small brands are now looking beyond local grocery stores and are tying up with Supermarkets such as Big Bazaar to pull their business out of troubled waters.

36. Which of the following can be inferred from the given information? (An inference is something that is not directly stated but can be inferred from the given information)

(1) Merchandise of smaller brands would not be available at local grocery stores in the near future.

(2) Smaller brands cannot compete with bigger ones in a supermarket set-up.

(3) There is a perception among small brands that sale in a supermarket is higher than that of small grocery stores.

(4) Supermarkets generate more revenue by selling products of bigger brands as compared to the smaller ones.

(5) Smaller brands have always had more tie-ups with supermarkets as compared to small grocery stores.

Directions (37 - 40) : These questions are based on the information given above and the sentences labeled (A), (B), (C), (D), (E) and (F) as given below.

(A) A smaller brand manufacturing a certain product of quality comparable with that of a bigger brand, makes much more profit from the local grocery stores than from the supermarkets.

(B) As the supermarkets have been set up only in bigger cities at present, this step would fail to deliver results in the smaller cities.

(C) Supermarkets help the smaller brands to break into newer markets without investing substantially in distribution.

(D) Supermarkets charge the smaller brands 10% higher than the amount charged to the bigger brands.

(E) Being outnumbered by the bigger brands, visibility of the smaller brands at lo-

cal grocery stores is much lower as compared to the supermarkets.

(F) Smaller brands are currently making substantial losses in their businesses.

37. Which of the statements numbered (A), (B), (C), (D), (E) and (F) can be assumed from the facts/ information given in the statement? (An assumption is something supposed or taken for granted)

(1) Only (A)

(2) Only (B)

(3) Both (B) and (C)

(4) Both (D) and (E)

(5) Only (F)

38. Which of the statements numbered (A), (B), (C), (E) and (F) represents a disadvantage of the small grocery stores over the Supermarkets from the perspective of a smaller brand?

(1) Only (A)

(2) Only (C)

(3) Only (E)

(4) Only (F)

(5) Both (B) and (C)

39. Which of the statements (A), (B), (C), (D) and (E) mentioned above represents a reason for the shift from local grocery stores to supermarkets by the smaller brands?

(1) Only (A)

(2) Only (B)

(3) Only (D)

(4) Both (A) and (D)

(5) Both (C) and (E)

40. Which of the statements numbered (A), (B), (C), (E) and (F) mentioned above would prove that the step taken by the smaller brands (of moving to supermarkets) may not necessarily be correct?

(1) Only (A)

(2) Only (C)

(3) Only (E)

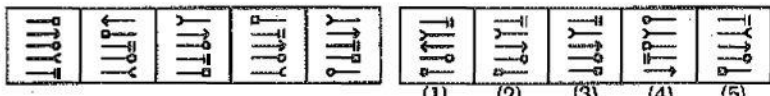
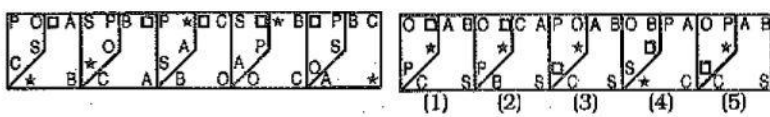
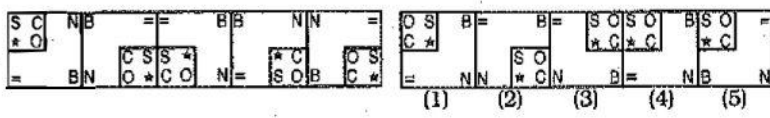
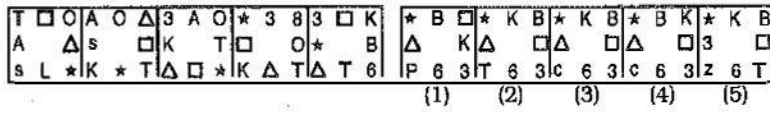
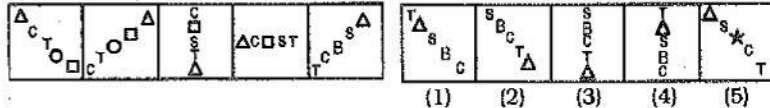
(4) Only (F)

(5) Both (B) and (E)

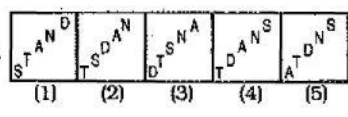
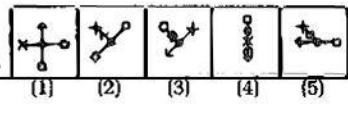
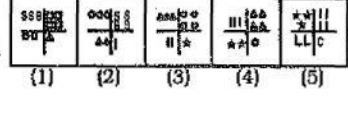
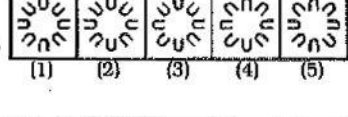
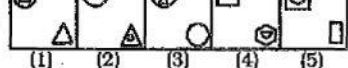
Directions (41-50) : In each of the questions given below which one of the five answer figures on the right should come after the problem figures on the left, if the sequence were continued?

Problem Figures

Answer Figures

41. 
42. 
43. 
44. 
45. 

Directions (46-50) : In each of the following questions below, the figures follow a series/sequence (like questions 41 to 45). One and only one out of the five figures does not fit in the series/sequence. The number of that figure is your answer.

46. 
47. 
48. 
49. 
50. 

QUANTITATIVE APTITUDE

Directions (51-55) : What will come in place of the question mark (?) in the following questions?

51. $4003 \times 77 - 21015 = ? \times 116$
 (1) 2477 (2) 2478
 (3) 2467 (4) 2476
 (5) None of these
52. $[(5\sqrt{7} + \sqrt{7}) \times (4\sqrt{7} + 8\sqrt{7})] - (19)^2 = ?$
 (1) 143 (2) $72\sqrt{7}$
 (3) 134 (4) $70\sqrt{7}$
 (5) None of these
53. $(4444 \div 40) + (645 \div 25) + (3991 \div 26) = ?$
 (1) 280.4 (2) 290.4
 (3) 295.4 (4) 285.4
 (5) None of these
54. $\sqrt{33124} \times \sqrt{2601} - (83)^2 = (?)^2 + (37)^2$
 (1) 37 (2) 33
 (3) 34 (4) 28
 (5) None of these

55. $5\frac{17}{37} \times 4\frac{51}{52} \times 11\frac{1}{7} + 2\frac{3}{4} = ?$
 (1) 303.75 (2) 305.75
 (3) $303\frac{3}{4}$ (4) $305\frac{1}{4}$
 (5) None of these

Directions (56-60) : What approximate value should come in place of the question mark (?) in the following questions?

(Note : You are not expected to calculate the exact value.)

56. $8787 \div 343 \times \sqrt{50} = ?$
 (1) 250 (2) 140
 (3) 180 (4) 100
 (5) 280
57. $\sqrt[3]{54821} \times (303 + 8) = (?)^2$
 (1) 48 (2) 38
 (3) 28 (4) 18
 (5) 58
58. $\frac{5}{8}$ of 4011.33 + $\frac{7}{10}$ of 3411.22 = ?
 (1) 4810 (2) 4980
 (3) 4890 (4) 4930
 (5) 4850
59. 23% of 6783 + 57% of 8431 = ?
 (1) 6460 (2) 6420
 (3) 6320 (4) 6630
 (5) 6360
60. $335.01 \times 244.99 \div 55 = ?$
 (1) 1490 (2) 1550
 (3) 1420 (4) 1590
 (5) 1400
- Directions (61-65) :** In each of these questions a number series is given. In each series only one number is wrong. Find out the wrong number.
61. 5531 5506 5425 5304 5135
 4910 4621
 (1) 5531 (2) 5425
 (3) 4621 (4) 5135
 (5) 5506
62. 6 7 9 13 26 37 69
 (1) 7 (2) 26
 (3) 69 (4) 37
 (5) 9
63. 1 3 10 36 152 760 4632
 (1) 3 (2) 36
 (3) 4632 (4) 760
 (5) 152

64. 4 5 13 40 105 229 445

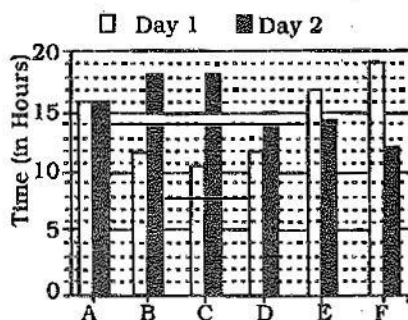
- (1) 4 (2) 13
(3) 105 (4) 445
(5) 229

65. 157.5 45 156 3 2 1

- (1) 1 (2) 2
(3) 6 (4) 157.5
(5) 45

Directions (66-70) : Study the following graph and table carefully and answer the questions given below :

**Time Taken to Travel (in hours)
By Six Vehicles On Two Different Days**



Vehicles

**Distance covered (in kilometres)
by six vehicles on each day**

Vehicle	Day 1	Day 2
A	832	864
B	516	774
C	693	810
D	552	765
E	935	546
F	703	636

66. Which of the following vehicles travelled at the same speed on both the days?

- (1) Vehicle A (2) Vehicle C
(3) Vehicle F (4) Vehicle B
(5) None of these

67. What was the difference between the speed of vehicle A on day 1 and the speed of vehicle C on the same day?

- (1) 7 km/hr. (2) 12 km/hr.
(3) 11 km/hr. (4) 8 km/hr.
(5) None of these

68. What was the speed of vehicle C on day 2 in terms of metres per second?

- (1) 15.3 (2) 12.8
(3) 11.5 (4) 13.8
(5) None of these

69. The distance travelled by vehicle F on day 2 was approximately what per cent of the distance travelled by it on day 1?

- (1) 80 (2) 65
(3) 85 (4) 95
(5) 90

70. What is the respective ratio between the speeds of vehicle D and vehicle E on day 2?

- (1) 15 : 13 (2) 17 : 13
(3) 13 : 11 (4) 17 : 14
(5) None of these

71. An article was purchased for ₹ 78,350. Its price was marked up by 30%. It was sold at a discount of 20% on the marked up price. What was the profit percent on the cost price?

- (1) 4 (2) 7
(3) 5 (4) 3
(5) 6

72. When X is subtracted from the numbers 9, 15 and 27, the remainders are in continued proportion. What is the value of X?

- (1) 8 (2) 6
(3) 4 (4) 5
(5) None of these

73. What is the difference between the simple and compound interest on ₹ 7300 at the rate of 6 p.c.p.a. in 2 years?

- (1) ₹ 29.37 (2) ₹ 26.28
(3) ₹ 31.41 (4) ₹ 23.22
(5) ₹ 21.34

74. Sum of three consecutive numbers is 2262. What is 41% of the highest number?

- (1) 301.51 (2) 303.14
(3) 308.73 (4) 306.35
(5) 309.55

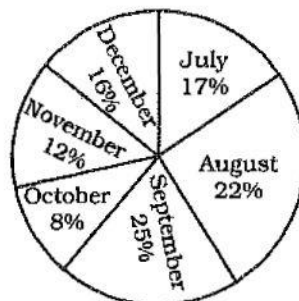
75. In how many different ways can the letters of the word 'THERAPY' be arranged so that the vowels never come together?

- (1) 720 (2) 1440
(3) 5040 (4) 3600
(5) 4800

Directions (76-80) : Study the following pie-chart and table carefully and answer the questions given below :

Percentagewise Distribution of the Number of Mobile Phones Sold by A Shopkeeper During Six Months

Total number of mobile phones sold = 45000



The respective ratio between the number of mobile phones sold of company A and company B during six months

Month	Ratio
July	8 : 7
August	4 : 5
September	3 : 2
October	7 : 5
November	7 : 8
December	7 : 9

76. What is the respective ratio between the number of mobile phones sold of company B during July and those sold during December of the same company?

- (1) 119 : 145 (2) 116 : 135
(3) 119 : 135 (4) 119 : 130
(5) None of these

77. If 35% of the mobile phones sold by company A during November were sold at a discount, how many mobile phones of company A during that month were sold without a discount?

- (1) 882 (2) 1635
(3) 1638 (4) 885
(5) None of these

78. If the shopkeeper earned a profit of ₹ 433 on each mobile phone sold of company B dur-

ing October, what was his total profit earned on the mobile phones of that company during the same month?

- (1) ₹ 6,49,900
- (2) ₹ 6,45,900
- (3) ₹ 6,49,400
- (4) ₹ 6,49,500
- (5) None of these

79. The number of mobile phones sold of company A during July is **approximately** what per cent of the number of mobile phones sold of company A during December?

- (1) 110
- (2) 140
- (3) 150
- (4) 105
- (5) 130

80. What is the total number of mobile phones sold of company B during August and September together?

- (1) 10,000
- (2) 15,000
- (3) 10,500
- (4) 9,500
- (5) None of these

Directions (81-85): Study the following information and answer the questions that follow:

The premises of a bank are to be renovated. The renovation is in terms of flooring. Certain areas are to be floored either with marble or wood. All rooms/halls and pantry are rectangular. The area to be renovated comprises of a hall for customer transaction measuring 23m by 29 m, branch manager's room measuring 13m by 17m, a pantry measuring 14m by 13m, a record keeping cum server room measuring 21 m by 13 m and locker area measuring 29 m by 21m. The total area of the bank is 2000 square meters. The cost of wooden flooring is ₹ 170 per square metre and the cost of marble flooring is ₹ 190 per square metre. The locker area, record keeping cum server room and pantry are to be floored with marble. The branch manager's room and the hall for customer transaction are to be floored with wood. No other area is to be renovated in terms of flooring.

81. What is the respective ratio of the total cost of wooden flooring to the total cost of marble flooring?

- (1) 1879 : 2527
- (2) 1887 : 2386
- (3) 1887 : 2527
- (4) 1829 : 2527
- (5) 1887 : 2351

82. If the four walls and ceiling of the branch manager's room (The height of the room is 12 metres) are to be painted at the cost of ₹ 190 per square metre, how much will be the total cost of renovation of the branch manager's room including the cost of flooring? (1) ₹ 1,36,800 (2) ₹ 2,16,660 (3) ₹ 1,78,790 (4) ₹ 2,11,940 (5) None of these

83. If the remaining area of the bank is to be carpeted at the rate of ₹ 110 per square metre, how much will be the increment in the total cost of renovation of bank premises? (1) ₹ 5,820 (2) ₹ 4,848 (3) ₹ 3,689 (4) ₹ 6,890 (5) None of these

84. What is the percentage area of the bank that is **not** to be renovated? (1) 2.2 (2) 2.4 (3) 4.2 (4) 4.4 (5) None of these

85. What is the total cost of renovation of the hall for customer transaction and the locker area? (1) ₹ 2,29,100 (2) ₹ 2,30,206 (3) ₹ 2,16,920 (4) ₹ 2,42,440 (5) None of these

86. A certain amount was to be distributed among A, B and C in the ratio 2 : 3 : 4 respectively, but was erroneously distributed in the ratio 7 : 2 : 5 respectively. As a result of this, B got ₹ 40 less. What is the amount?

- (1) ₹ 210
- (2) ₹ 270
- (3) ₹ 230
- (4) ₹ 280
- (5) None of these

87. Rachita enters a shop to buy ice-creams, cookies and pastries. She has to buy atleast 9 units of each. She buys more cookies than ice-creams and

more pastries than cookies. She picks up a total of 32 items. How many cookies does she buy?

- (1) Either 12 or 13
- (2) Either 11 or 12
- (3) Either 10 or 11
- (4) Either 9 or 11
- (5) Either 9 or 10

88. The fare of a bus is ₹ x for the first five kilometres and ₹ 13 per kilometre thereafter. If a passenger pays ₹ 2,402 for a journey of 187 kilometres, what is the value of X?

- (1) ₹ 29
- (2) ₹ 39
- (3) ₹ 36
- (4) ₹ 31
- (5) None of these

89. The product of three consecutive even numbers is 4032. The product of the first and the third number is 252. What is five times the second number? (1) 80 (2) 100 (3) 60 (4) 70 (5) 90

90. The sum of the ages of 4 members of a family 5 years ago was 94 years. Today, when the daughter has been married off and replaced by a daughter-in-law, the sum of their ages is 92. Assuming that there has been no other change in the family structure and all the people are alive, what is the difference in the age of the daughter and the daughter-in-law? (1) 22 years (2) 11 years (3) 25 years (4) 19 years (5) 15 years

91. A bag contains 13 white and 7 black balls. Two balls are drawn at random. What is the probability that they are of the same colour?

- (1) $\frac{41}{190}$
- (2) $\frac{21}{190}$
- (3) $\frac{59}{190}$
- (4) $\frac{99}{190}$
- (5) $\frac{77}{190}$

92. Akash scored 73 marks in subject A. He scored 56% marks in subject B and x marks in subject C. Maximum marks in each subject were 150. The overall percentage marks obtained by Akash in all the three subjects together were 54%. How many marks did he score in subject C?

- (1) 84 (2) 86
(3) 79 (4) 73
(5) None of these

93. The area of a square is 1444 square metre. The breadth of

a rectangle is $\frac{1}{4}$ th of the side

of the square and the length of the rectangle is thrice the breadth. What is the difference between the area of the square and the area of the rectangle?

- (1) 1152.38 sq.mtr.
(2) 1169.33 sq.mtr.
(3) 1181.21 sq.mtr.
(4) 1173.25 sq.mtr.
(5) None of these

94. ₹ 73,689, are divided between A and B in the ratio 4 : 7. What is the difference between thrice the share of A and twice the share of B?

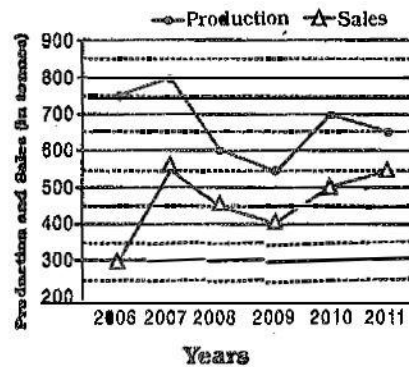
- (1) ₹ 36,699 (2) ₹ 46,893
(3) ₹ 20,097 (4) ₹ 26,796
(5) ₹ 13,398

95. A and B together can complete a task in 20 days. B and C together can complete the same task in 30 days. A and C together can complete the same task in 40 days. What is the respective ratio of the number of days taken by A when completing the same task alone to the number of days taken by C when completing the same task alone?

- (1) 2 : 5 (2) 2 : 7
(3) 3 : 7 (4) 1 : 5
(5) 3 : 5

Directions (96-100) : Study the following information and answer the questions that follow :

The graph given below represents the production (in tonnes) and sales (in tonnes) of company A from 2006-2011.



The table given below represents the respective ratio of the production (in tonnes) of Company A to the production (in tonnes) of Company B, and the respective ratio of the sales (in tonnes) of Company A to the sales (in tonnes) of Company B.

Years	Production	Sales
2006	5 : 4	2 : 3
2007	8 : 7	11 : 12
2008	3 : 4	9 : 14
2009	11 : 12	4 : 5
2010	14 : 13	10 : 9
2011	13 : 14	1 : 1

96. What is the approximate percentage increase in the production of Company A (in tonnes) from the year 2009 to the production of Company A (in tonnes) in the year 2010?

- (1) 18 (2) 38
(3) 23 (4) 27
(5) 32

97. The sales of Company A in the year 2009 was approximately what percent of the production of Company A in the same year?

- (1) 65 (2) 73
(3) 79 (4) 83
(5) 69

98. What is the average production of company B (in tonnes)

from the year 2006 to the year 2011?

- (1) 574 (2) 649
(3) 675 (4) 593
(5) 618

99. What is the respective ratio of the total production (in tonnes) of Company A to the total sales (in tonnes) of Company A?

- (1) 81 : 64 (2) 64 : 55
(3) 71 : 81 (4) 71 : 55
(5) 81 : 55

100. What is the respective ratio of production of Company B (in tonnes) in the year 2006 to production of Company B (in tonnes) in the year 2008?

- (1) 2 : 5 (2) 4 : 5
(3) 3 : 4 (4) 3 : 5
(5) 1 : 4

GENERAL AWARENESS

101. A money deposited at a bank that cannot be withdrawn for a preset fixed period of time is known as a _____

- (1) Term Deposit
(2) Checking Account
(3) Savings Bank Deposit
(4) No Frills Account
(5) Current Deposit

102. A worldwide financial messaging network which exchanges messages between banks and financial institutions is known as _____

- (1) CHAPS (2) SWIFT
(3) NEFT (4) SFMS
(5) CHIPS

103. Which of the following Ministries alongwith Planning Commission of India has decided to set up a Corpus Fund of Rs. 500 crore, so that Tribals in Naxal-hit areas can be provided proper means of livelihood?

- (1) Ministry of Rural Development
(2) Ministry of Home Affairs
(3) Ministry of Tribal Affairs
(4) Ministry of Corporate Affairs
(5) Ministry of Finance

- 104.** Which of the following was the issue over which India decided to vote against Sri Lanka in the meeting of one of the UN governed bodies/agencies?
- (1) Violations of human rights in Sri Lanka
 - (2) Allowing China to establish a military base in Indian ocean
 - (3) Issue of subsidy on agricultural products in the meeting of the WTO
 - (4) Allowing part of Sri Lanka to become an independent country governed by LTTE
 - (5) Sri Lanka's claim to become a permanent member of UN Security Council
- 105.** The term 'Smart Money' refers to —
- (1) Foreign Currency
 - (2) Internet Banking
 - (3) US Dollars
 - (4) Travelers' cheques
 - (5) Credit Cards
- 106.** Which one of the following is not a 'Money Market Instrument'?
- (1) Treasury Bills
 - (2) Commercial Paper
 - (3) Certificate of Deposit
 - (4) Equity Shares
 - (5) None of these
- 107.** Which one of the following is a retail banking product?
- (1) Home Loans
 - (2) Working capital finance
 - (3) Corporate term loans
 - (4) Infrastructure financing
 - (5) Export Credit
- 108.** Which of the following statements is TRUE about political situation in Mali, where a military coup burst out recently?
- (1) General elections were due there in March/April 2012 but did not take place
 - (2) The country was under the control of US army since last 18 months
 - (3) Army of the country was not happy as Amadou Toure was made President without elections for the next five years
 - (4) Coup broke out in Mali when Amadou Toure, the Military Chief got seriously injured in a bomb blast
 - (5) NATO and its associates had planned a coup there
- 109.** In the summit of which of the following organizations/group of Nations it was decided that all members should enforce Budget Discipline?
- (1) G-8
 - (2) OPEC
 - (3) European Union
 - (4) SAARC
 - (5) G-20
- 110.** As per newspaper reports, India is planning to use 'SEU' as fuel in its 700 MW nuclear reactors being developed in new plants. What is full form of 'SEU' as used here?
- (1) Safe Electrical Units
 - (2) Small Electrical Units
 - (3) Slightly Enriched Uranium
 - (4) Sufficiently Enriched Units
 - (5) Safely Enriched Uranium
- 111.** Technological Advancement in the recent times has given a new dimension to banks, mainly to which one of the following aspects?
- (1) New Age Financial Derivatives
 - (2) Service Delivery Mechanism
 - (3) Any Banking
 - (4) Any type Banking
 - (5) Multilevel Marketing
- 112.** When there is a difference between all receipts and expenditure of the Government of India, both capital and revenue, it is called —
- (1) Revenue Deficit
 - (2) Budgetary Deficit
 - (3) Zero Budgeting
 - (4) Trade Gap
 - (5) Balance of payment problem
- 113.** Which of the following is NOT a function of the Reserve Bank of India?
- (1) Fiscal Policy Functions
 - (2) Exchange Control Functions
 - (3) Issuance, Exchange and destruction of currency notes
 - (4) Monetary Authority Functions
 - (5) Supervisory and Control Functions
- 114.** Which of the following is NOT required for opening a bank account?
- (1) Identity Proof
 - (2) Address Proof
 - (3) Recent Photographs
 - (4) Domicile Certificate
 - (5) None of these
- 115.** The Golden Jubilee of Afro-Asian Rural Development organization was organized in which of the following places in March 2012?
- (1) Dhaka
 - (2) Tokyo
 - (3) Cairo
 - (4) Kuala Lumpur
 - (5) New Delhi
- 116.** What is the maximum deposit amount insured by DICGC?
- (1) Rs. 2,00,000 per depositor per bank
 - (2) Rs. 2,00,000 per depositor across all banks
 - (3) Rs. 1,00,000 per depositor per bank
 - (4) Rs. 1,00,000 per depositor across all banks
 - (5) None of these
- 117.** The present Foreign Trade Policy of India will continue till —
- (1) December 2012
 - (2) March 2013
 - (3) March 2014
 - (4) June 2013
 - (5) December 2014
- 118.** With reference to a cheque which of the following is the 'drawee bank'?
- (1) The bank that collects the cheque
 - (2) The payee's bank
 - (3) The endorsee's bank
 - (4) The endorser's bank
 - (5) The bank upon which the cheque is drawn

119. In which of the following fund transfer mechanisms, can funds be moved from one bank to another and where the transaction is settled instantly without being bunched with any other transaction?

- (1) RTGS (2) NEFT
- (3) TT (4) EFT
- (5) MT

120. What was the reason owing to which Enrica Lexde, an Italian ship was detained by the Port Authorities in Kerala and was brought to Cochin port for inspection and search?

- (1) It was carrying objectionable material
- (2) It was involved in sea piracy
- (3) It was detained as the crew killed two Indian fishermen
- (4) The ship started sailing without making payments of iron ore it loaded
- (5) It was detained as it was dumping nuclear waste in deep sea

121. Which of the following agencies/organizations recently gave 'go-ahead' verdict to India's one of the most controversial project of inter linking rivers? (some of the rivers are international rivers)

- (1) UN Food and Agriculture Organisation
- (2) World Meteorological Organisation
- (3) International Court of Justice
- (4) Central Water Commission
- (5) Supreme Court of India

122. Who among the following was the Captain of the Australian Team which played 4 Test matches against India in January 2012 and won all of them?

- (1) Ricky Ponting
- (2) Michael Clarke
- (3) Nathan Lyon
- (4) Stuart Clark
- (5) Andrew Symonds

123. The committee on review of National Small Saving Fund (NSSF) was headed by—

- (1) Dr. C. Rangarajan
- (2) Mr. U. K. Sinha
- (3) Dr. Y. V. Reddy
- (4) Mrs. Shyamala Gopinath
- (5) Dr. Usha Thorat

124. Banking Ombudsman Scheme is applicable to the business of

- (1) All scheduled commercial banks excluding RRBs
- (2) All scheduled commercial banks including RRBs
- (3) Only Public Sector Banks
- (4) All Banking Companies
- (5) All scheduled banks except private banks

125. The 5th Asian Indoor Athletics Championship was organized in February 2012 in—

- (1) Bangladesh
- (2) India
- (3) Qatar (4) China
- (5) South Korea

126. Nationalization of banks aimed at all of the following except—

- (1) Provision of adequate credit for agriculture, SME & exports
- (2) Removal of control by a few capitalists
- (3) Provision of credit to big industries only
- (4) Access of banking to masses
- (5) Encouragement of a new class of entrepreneurs

127. Who among the following was the Chief Guest at the three-day Pravasi Bharatiya Divas function held in January 2012?

- (1) Kamla Persad Bissessar
- (2) Ram Baran Yadav
- (3) Lakshmi Mittal
- (4) Salman Rushdie
- (5) Benjamin Netanyahu

128. Which of the following banks is headed by a woman CEO?

- (1) Bank of Baroda
- (2) HDFC Bank

- (3) Central Bank of India
- (4) Punjab National Bank
- (5) ICICI Bank

129. As per revised RBI Guidelines, Provision on secured portion of loan accounts classified as Doubtful Assets for more than one year and upto 3 (three) years is to be made at the rate of —

- (1) 15% (2) 20%
- (3) 40% (4) 25%
- (5) 30%

130. As per the provisions in the Food Security Bill - 2011, per month how much food grain should be given to each person of the target group?

- (1) 5kg (2) 7kg
- (3) 9kg (4) 10kg
- (5) 20kg

131. Which of the following acts in vogue in India is against the thinking of raising school fee as per demand of the market forces?

- (1) Prevention of Corruption Act
- (2) Child Labour (Prohibition & Regulation) Act
- (3) Sharda Act
- (4) Right to Education Act
- (5) MG National Rural Employment Guarantee Act

132. Which of the following states has launched 'Panch Parmeshwar Yojana' under which panchayats are allowed to use the fund for developing infrastructure and basic amenities in villages?

- (1) Uttar Pradesh
- (2) Maharashtra
- (3) Gujarat
- (4) Madhya Pradesh
- (5) Tamil Nadu

133. Base Rate is the rate below which no Bank can allow their lending to anyone. Who sets up this 'Base Rate' for Banks?

- (1) Individual Banks' Board
- (2) Ministry of Commerce
- (3) Ministry of Finance
- (4) RBI
- (5) Interest Rate Commission of India

- 134.** National Table Tennis Championship was organized in January 2012 in ———
 (1) Mumbai (2) Delhi
 (3) Hyderabad
 (4) Lucknow (5) Jaipur
- 135.** Who among the following is the author of the book 'Nirbasan' ?
 (1) Mahashweta Devi
 (2) Taslima Nasreen
 (3) Sunil Gangopadhyay
 (4) Vikram Seth
 (5) Kiran Desai
- 136.** What is a 'Debit Card' ?
 (1) It is a card issued by a Rating Agency
 (2) It is a card which can be used for withdrawing cash or making payment even in the absence of any balance in the account
 (3) It is a card which can be used for withdrawing cash or making payment if there is balance in the account
 (4) It is a card which carries prepaid balance
 (5) It is a card which can be used for making STD calls
- 137.** Who among the following Indian Lawn Tennis player won a Doubles of Australian Open 2012 ?
 (1) Mahesh Bhupathi
 (2) Kamlesh Mehta
 (3) Leander Paes
 (4) Sania Mirza
 (5) Achanta Sarath Kamal
- 138.** 'Akula-11' Class 'K-152 Nerpa' was inducted in Indian Navy recently. These are ———
 (1) Aircraft
 (2) Radar System
 (3) Submarines Missiles
 (4) Warship
 (5) Submarines
- 139.** Which of the following awards was conferred upon Late Mario De Miranda (Posthumously) in January 2012?
 (1) Padma Vibhushan
 (2) Bharat Ratna
 (3) Kalidas Samman
 (4) Saraswati Samman
 (5) Padmashri
- 140.** Bad advances of a Bank are called :
 (1) Bad debt (2) Book debt
 (3) Non Performing Asset
 (4) Out of order accounts
 (5) Overdrawn accounts
- 141.** Axis Bank is a ———
 (1) Public Sector Bank
 (2) Private Sector Bank
 (3) Co-operative Bank
 (4) Foreign Bank
 (5) Gramin Bank
- 142.** By increasing repo rate, the economy may observe the following effects :
 (1) Rate of interest on loans and advances will be costlier
 (2) Industrial output would be affected to an extent
 (3) Banks will increase rate of interest on deposits
 (4) Industry houses may borrow money from foreign countries
 (5) All of these
- 143.** Increased interest rates, as is existing in the economy at present will ———
 (1) Lead to higher GDP growth
 (2) Lead to lower GDP growth
 (3) Mean higher cost of raw materials
 (4) Mean lower cost of raw materials
 (5) Mean higher wage bill
- 144.** Which of the following schemes is launched to provide pension to people in unorganized sectors in India ?
 (1) Swabhiman
 (2) Jeevan Dhara
 (3) Jeevan Kalyan
 (4) ASHA
 (5) Swavalamban
- 145.** The 10th Basic Ministerial Meeting on Climate Change was organized in February 2012 in ———
 (1) Tokyo (2) Beijing
 (3) Manila (4) Moscow
 (5) New Delhi
- 146.** Finance Ministry has asked the Reserve Bank of India to allow common ATM's that will be owned and managed by non-banking entities hoping to cut transaction costs for banks. Such ATM's are known as ———
 (1) Black Label ATM's
 (2) Offsite ATM's
 (3) On site ATM's or red ATM's
 (4) Third party ATM's
 (5) White label ATM's
- 147.** Which of the following schemes of the Government of India has provided electricity to 99000 villages and total 1.7 crore households uptill now ?
 (1) Kutir Jyoti
 (2) Rajiv Gandhi Grameen Vidyutikaran Yojana
 (3) Bharat Nirman
 (4) PURA (5) SEWA
- 148.** Ranbir Kapoor was awarded Best Actor Award in 57th Filmfare Award Function for his performance in ———
 (1) No One Killed Jessica
 (2) Stanley Ka Dabba
 (3) 7 Khoon Maaf
 (4) Rockstar
 (5) Zindagi Na Milegi Dobara
- 149.** An ECS transaction gets bounced and you are unable to recover your money from your customer. Under which Act criminal action can be initiated ?
 (1) Indian Penal Code
 (2) Negotiable Instruments Act
 (3) Criminal Procedure Code
 (4) Payment and Settlements Act
 (5) Indian Contract Act
- 150.** Mr. Rajendra had filed a complaint with Banking Ombudsman but is not satisfied with the decision. What is the next option before him for getting his matter resolved ?
 (1) Write to the CMD of the Bank
 (2) File an appeal before the Finance Minister
 (3) File an appeal before the Banking Ombudsman again
 (4) File an appeal before the Deputy Governor RBI
 (5) Simply close the matter as going to court involves time and money

COMPUTER KNOWLEDGE

151. _____ allows users to upload files to an online site so they can be viewed and edited from another location.
- (1) General-purpose applications
 - (2) Microsoft Outlook
 - (3) Web-hosted technology
 - (4) Office Live
 - (5) None of these
152. What feature adjusts the top and bottom margins so that the text is centred vertically on the printed page?
- (1) Vertical justifying
 - (2) Vertical adjusting
 - (3) Dual centring
 - (4) Horizontal centring
 - (5) Vertical centring
153. Which of these is not a means of personal communication on the Internet?
- (1) chat
 - (2) instant messaging
 - (3) instanotes
 - (4) electronic mail
 - (5) None of these
154. What is the overall term for creating, editing, formatting, storing, retrieving, and printing a text document?
- (1) Word processing
 - (2) Spreadsheet design
 - (3) Web design
 - (4) Database management
 - (5) Presentation generation
155. Fourth-generation mobile technology provides enhanced capabilities allowing the transfer of both _____ data, including full-motion video, high-speed Internet access, and videoconferencing.
- (1) video data and information
 - (2) voice and nonvoice
 - (3) music and video
 - (4) video and audio
 - (5) None of these
156. _____ is a form of denial of service attack in which a hostile client repeatedly sends SYN packets to every port on the server using fake IP addresses.
- (1) Cybergaming crime
 - (2) Memory shaving
 - (3) Syn flooding
 - (4) Software piracy
 - (5) None of these
157. Which of these is a point-and-draw device?
- (1) mouse
 - (2) scanner
 - (3) printer
 - (4) CD-ROM
 - (5) Keyboard
158. The letter and number of the intersecting column and row is the
- (1) cell location
 - (2) cell position
 - (3) cell address
 - (4) cell coordinates
 - (5) cell contents
159. A set of rules for telling the computer what operations to perform is called a _____
- (1) procedural language
 - (2) structures
 - (3) natural language
 - (4) command language
 - (5) programming language
160. A detailed written description of the programming cycle and the program, along with the test results and a printout of the program is called _____
- (1) documentation
 - (2) output
 - (3) reporting
 - (4) spec sheets
 - (5) Directory
161. Forms that are used to organize business data into rows and columns are called _____
- (1) transaction sheets
 - (2) registers
 - (3) business forms
 - (4) sheet-spreads
 - (5) spreadsheets
162. In Power Point, the Header & Footer button can be found on the Insert tab in what group?
- (1) Illustrations group
 - (2) Object group
 - (3) Text group
 - (4) Tables group
 - (5) None of these
163. A(n) _____ is a set of programs designed to manage the resources of a computer, including starting the computer, managing programs, managing memory, and coordinating tasks between input and output devices.
- (1) application suite
 - (2) compiler
 - (3) input/output system
 - (4) interface
 - (5) operating system (OS)
164. A typical slide in a slide presentation would not include
- (1) photo images charts, and graphs
 - (2) graphs and clip art
 - (3) clip art and audio clips
 - (4) full-motion video
 - (5) content templates
165. The PC productivity tool that manipulates data organized in rows and columns is called a _____
- (1) spreadsheet
 - (2) word processing document
 - (3) presentation mechanism
 - (4) database record manager
 - (5) EDI creator
166. In the absence of parentheses, the order of operation is _____
- (1) Exponentiation, addition or subtraction, multiplication or division
 - (2) Addition or subtraction, multiplication or division, exponentiation
 - (3) Multiplication or division, exponentiation, addition or subtraction
 - (4) Exponentiation, multiplication or division, addition or subtraction
 - (5) Addition or subtraction, exponentiation, multiplication or division
167. To find the Paste Special option, you use the Clipboard group on the _____ tab of Power Point.
- (1) Design
 - (2) Slide Show
 - (3) Page Layout
 - (4) Insert
 - (5) Home

168. A(n) _____ program is one that is ready to run and **does not** need to be altered in any way.
- (1) interpreter
 - (2) high-level (3) compiler
 - (4) COBOL (5) executable
169. Usually downloaded into folders that hold temporary Internet files, _____ are written to your computer's hard disk by some of the Web sites you visit.
- (1) anonymous files
 - (2) behaviour files
 - (3) banner ads
 - (4) large files
 - (5) cookies
170. What is the easiest way to change the phrase, revenues, profits, gross margin, to read revenues, profits, and gross margin?
- (1) Use the insert mode, position the cursor before the g in gross, then type the word and followed by a space
 - (2) Use the insert mode, position the cursor after the g in gross, then type the word and followed by a space
 - (3) Use the overtype mode, position the cursor before the g in gross, then type the word and followed by a space
 - (4) Use the overtype mode, position the cursor after the g in gross, then type the word and followed by a space
 - (5) None of these
171. A program, either talk or music, that is made available in digital format for automatic download over the Internet is called a —
- (1) wiki (2) broadcast
 - (3) vodcast (4) blog
 - (5) podcast
172. Which PowerPoint view displays each slide of the presentation as a thumbnail and is useful for rearranging slides?
- (1) Slide Sorter
 - (2) Slide Show
 - (3) Slide Master
 - (4) Notes Page
 - (5) Slide Design
173. Different components on the motherboard of a PC unit are linked together by sets of parallel electrical conducting lines. What are these lines called?
- (1) Conductors
 - (2) Buses
 - (3) Connectors
 - (4) Consecutives
 - (5) None of these
174. What is the name given to those applications that combine text, sound, graphics, motion video, and/or animation?
- (1) motionware
 - (2) anigraphics
 - (3) videoscapes
 - (4) multimedia
 - (5) maxomedia
175. A USB communication device that supports data encryption for secure wireless communication for notebook users is called a —
- (1) USB wireless network adapter
 - (2) wireless switch
 - (3) wireless hub
 - (4) router
 - (5) None of these
176. A(n) _____ language reflects the way people think mathematically.
- (1) cross-platform programming
 - (2) 3GL business programming
 - (3) event-driven programming
 - (4) functional
 - (5) None of these
177. When entering text within a document, the Enter key is normally pressed at the end of every —
- (1) Line (2) Sentence
 - (3) Paragraph (4) Word
 - (5) File
178. When a real-time telephone call between people is made over the Internet using computers, it is called —
- (1) a chat session
 - (2) an e-mail
 - (3) an instant message
 - (4) Internet telephony
 - (5) None of these
179. Which of the following is the first step in sizing a window?
- (1) Point to the title bar
 - (2) Pull down the View menu to display the toolbar
 - (3) Point to any corner or border
 - (4) Pull down the View menu and change to large icons
 - (5) None of these
180. Which of the following software could assist someone who cannot use their hands for computer input?
- (1) Video conferencing
 - (2) Speech recognition
 - (3) Audio digitizer
 - (4) Synthesizer
 - (5) None of these
181. _____ a document means the file is transferred from another computer to your computer.
- (1) Uploading
 - (2) Really Simple Syndication (RSS)
 - (3) Accessing
 - (4) Downloading
 - (5) Upgrading
182. Which computer memory is used for storing programs and data currently being processed by the CPU?
- (1) Mass memory
 - (2) Internal memory
 - (3) Non-volatile memory
 - (4) PROM
 - (5) None of these
183. Computers that control processes accept data in a continuous —
- (1) data traffic pattern
 - (2) data highway
 - (3) infinite loop
 - (4) feedback loop
 - (5) slot

184. What refers to a set of characters of a particular design ?
 (1) keyface (2) formation
 (3) calligraph (4) stencil
 (5) typeface
185. _____ is used by public and private enterprises to publish and share financial information with each other and industry analysts across all computer platforms and the Internet.
 (1) Extensible Markup Language (EML)
 (2) Extensible Business Reporting Language (XBRL)
 (3) Enterprise Application Integration (EAI)
 (4) Sales Force Automation (SFA) software
 (5) None of these
186. Which part of the computer is used for calculating and comparing ?
 (1) ALU (2) Control unit
 (3) Disk unit (4) Modem
 (5) None of these
187. The method of Internet access that requires a phone line, but offers faster access speeds than dial-up is the _____ connection.
 (1) cable access
 (2) satellite access
 (3) fiber-optic service
 (4) Digital Subscriber Line (DSL)
 (5) modem
188. _____ software creates a mirror image of the entire hard disk, including the operating system, applications, files, and data.
 (1) Operating system
 (2) Backup software
 (3) Utility programs
 (4) Driver imaging
 (5) None of these
189. What is a URL?
 (1) a computer software program
 (2) a type of programming object
 (3) the address of a document or "page" on the World Wide Web
 (4) an acronym for Unlimited Resources for Learning
 (5) a piece of hardware
190. What is the significance of a faded (dimmed) command in a pull-down menu ?
 (1) The command is not currently accessible
 (2) A dialog box appears if the command is selected
 (3) A Help window appears if the command is selected
 (4) There are no equivalent keystrokes for the particular command
 (5) None of these
191. Your business has contracted with another company to have them host and run an application for your company over the Internet. The company providing this service to your business is called an —
 (1) Internet service provider
 (2) Internet access provider
 (3) Application service provider
 (4) Application access provider
 (5) Outsource agency
192. A(n) _____ allows you to access your e-mail from anywhere.
 (1) Forum
 (2) Webmail interface
 (3) Message Board
 (4) Weblog
 (5) None of these
193. Which of the following would you find on LinkedIn ?
 (1) Games (2) Connections
 (3) Chat (4) Applications
 (5) None of these
194. _____ is a technique that is used to send more than one call over a single line.
 (1) Digital transmission
 (2) Infrared transmission
 (3) Digitizing
 (4) Streaming
 (5) Multiplexing
195. The Search Companion can —
 (1) Locate all files containing a specified phrase
 (2) Restrict its search to a specified set of folders
 (3) Locate all files containing a specified phrase and restrict its search to a specified set of folders
 (4) Cannot locate all files containing a specified phrase or restrict its search to a specified set of folders
 (5) None of these
196. Which of the following cannot be part of an email address ?
 (1) Period (.) (2) At sign (@)
 (3) Space ()
 (4) Underscore (_)
 (5) None of these
197. Which of the following must be contained in a URL?
 (1) a protocol identifier
 (2) the letters, www.
 (3) the unique registered domain name
 (4) www. and the unique registered domain name
 (5) a protocol identifier, www. and the unique registered domain name
198. Which of the following information systems focuses on making manufacturing processes more efficient and of higher quality ?
 (1) Computer-aided manufacturing
 (2) Computer-integrated manufacturing
 (3) Computer-aided software engineering
 (4) Computer-aided system engineering
 (5) None of these
199. A mistake in an algorithm that causes incorrect results is called a —
 (1) logical error
 (2) syntax error
 (3) procedural error
 (4) compiler error
 (5) machine error
200. A device for changing the connection on a connector to a different configuration is —
 (1) a converter
 (2) a component
 (3) an attachment
 (4) an adapter
 (5) voltmeter

ENGLISH LANGUAGE

Directions (201-215) : Read the following passage carefully and answer the questions given below it. Certain words/phrases have been printed in **bold** to help you locate them while answering some of the questions.

When times are hard, doom-sayers are aplenty. The problem is that if you listen to them too carefully, you tend to overlook the most obvious signs of change. 2011 was a bad year. Can 2012 be any worse? Doomsday forecasts are the easiest to make these days. So let's try a contrarian's forecast instead.

Let's start with the global economy. We have seen a steady flow of good news from the US. The employment situation seems to be improving rapidly and consumer sentiment, reflected in retail expenditures on discretionary items like electronics and clothes, has picked up. If these trends sustain, the US might post better growth numbers for 2012 than the 1.5-1.8 per cent being forecast currently.

Japan is likely to pull out of a recession in 2012 as post-earthquake reconstruction efforts gather momentum and the fiscal stimulus announced in 2011 begins to pay off. The consensus estimate for growth in Japan is a respectable 2 per cent for 2012.

The "hard-landing" scenario for China remains and will remain a **myth**. Growth might decelerate further from the 9 per cent that it expected to **clock** in 2011 but is unlikely to drop below 8-8.5 per cent in 2012.

Europe is certainly in a spot of trouble. It is perhaps already in recession and for 2012 it is likely to post mildly negative growth. The risk of implosion has dwindled over the last few months - peripheral economies like Greece, Italy and Spain have new governments in place and have made progress towards genuine economic reform.

Even with some of these positive factors in place, we have to accept the fact that global growth

in 2012 will be **tepid**. But there is a flipside to this. Softer growth means lower demand for commodities and this is likely to drive a correction in commodity prices. Lower commodity inflation will enable emerging market central banks to reverse their monetary stance. China, for instance, has already reversed its stance and has pared its reserve ratio twice. The RBI also seems poised for a reversal in its rate cycle as headline inflation seems well on its way to its target of 7 per cent for March 2012.

That said, oil might be an exception to the general trend in commodities. Rising geopolitical tensions, particularly the continuing face-off between Iran and the US, might lead to a spurt in prices. It might make sense for our oil companies to hedge this risk instead of buying oil in the spot market.

As inflation fears **abate** and emerging market central banks begin to cut rates, two things could happen. Lower commodity inflation would mean lower interest rates and better credit availability. This could set a floor to **growth** and slowly reverse the business cycle within these economies. Second, as the fear of untamed, runaway inflation in these economies abates, the global investor's comfort levels with their markets will increase.

Which of the **emerging** markets will outperform and who will get left behind? In an environment in which global growth is likely to be weak, economies like India that have a powerful domestic consumption dynamic should lead; those dependent on exports should, *prima facie*, fall behind. Specifically for India, a fall in the exchange rate could not have come at a better time. It will help Indian exporters gain market share even if global trade remains depressed. More importantly, it could lead to massive import substitution that favours domestic producers.

Let's now focus on India and start with a caveat. It is important not to confuse a short-run cyclical dip with a permanent de-rating of its long-term structural potential.

The arithmetic is simple. Our growth rate can be in the range of 7-10 per cent depending on policy action. Ten per cent if we get everything right, 7 per cent if we get it all wrong. Which policies and reforms are critical to taking us to our 10 per cent potential? In **judging** this, let's again be careful. Let's not go by the laundry list of reforms that FII's like to wave: increase in foreign equity limits in foreign shareholding, greater voting rights for institutional shareholders in banks, FDI in retail, etc. These can have an impact only at the margin. We need not bend over backwards to appease the FII's through these reforms - they will invest in our markets when momentum picks up and will be the first to exit when the momentum flags, reforms or not.

The reforms that we need are the ones that can actually raise our sustainable long-term growth rate. These have to come in areas like better targeting of subsidies, making projects in infrastructure viable so that they **draw** capital, raising the productivity of agriculture, improving healthcare and education, bringing the parallel economy under the tax net, implementing fundamental reforms in taxation like GST and the direct tax code and finally easing the **myriad** rules and regulations that make doing business in India such a nightmare. A number of these things do not require new legislation and can be done through executive order.

201. Which of the following is **NOT TRUE** according to the passage?

- (1) China's economic growth may decline in the year 2012 as compared to the year 2011
- (2) The European economy is not doing very well
- (3) Greece is on the verge of bringing about economic reforms
- (4) In the year 2012, Japan may post a positive growth and thus pull out of recession
- (5) All are **true**

202. Which of the following will possibly be a result of softer growth estimated for the year 2012?

- (A) Prices of oil will not increase.
- (B) Credit availability would be lesser.
- (C) Commodity inflation would be lesser.
- (1) Only (B)
- (2) Only (A) and (B)
- (3) Only (A) and (C)
- (4) Only (C)
- (5) All (A), (B) and (C)

203. Which of the following can be said about the present status of the US economy?

- (1) There is not much improvement in the economic scenario of the country from the year 2011
- (2) The growth in the economy of the country, in the year 2012, would definitely be lesser than 1.8 per cent
- (3) The expenditure on clothes and electronic commodities, by consumers, is lesser than that in the year 2011
- (4) There is a chance that in 2012 the economy would do better than what has been forecast
- (5) The pace of change in the employment scenario of the country is very slow.

204. Which of the following is possibly the most appropriate title for the passage?

- (1) The Economic Disorder
- (2) Indian Economy Versus The European Economy
- (3) Global Trade
- (4) The Current Economic Scenario
- (5) Characteristics Of The Indian Economy

205. According to the author, which of the following would characterise Indian growth scenario in 2012?

- (A) Domestic producers will take a hit because of depressed global trade scenario.

(B) On account of its high domestic consumption, India will lead.

(C) Indian exporters will have a hard time in gaining market share.

- (1) Only (B)
- (2) Only (A) and (B)
- (3) Only (B) and (C)
- (4) Only (A)
- (5) All (A), (B) and (C)

206. Why does the author not recommend taking up the reforms suggested by FIIs?

- (1) These will bring about only minor growth
- (2) The reforms suggested will have no effect on the economy of our country, whereas will benefit the FIIs significantly
- (3) The previous such recommendations had backfired
- (4) These reforms will be the sole reason for our country's economic downfall
- (5) The reforms suggested by them are not to be trusted as they will not bring about any positive growth in India

207. Which of the following is TRUE as per the scenario presented in the passage?

- (1) The highest growth rate that India can expect is 7 per cent
- (2) The fall in the exchange rate will prove beneficial to India
- (3) Increased FDI in retail as suggested by FIIs would benefit India tremendously
- (4) The reforms suggested by the author require new legislation in India
- (5) None is true

208. According to the author, which of the following reform/s is/are needed to ensure long term growth in India?

- (A) Improving healthcare and educational facilities.
- (B) Bringing about reforms in taxation.
- (C) Improving agricultural productivity.

- (1) Only (B)
- (2) Only (A) and (B)
- (3) Only (B) and (C)
- (4) Only (A)
- (5) All (A), (B) and (C)

Directions (209-212) :

Choose the word/group of words which is **MOST SIMILAR** in meaning to the word/ group of words printed in **bold** as used in the passage.

209. DRAW

- (1) entice
- (2) push
- (3) decoy
- (4) attract
- (5) persuade

210. CLOCK

- (1) watch
- (2) achieve
- (3) time
- (4) second
- (5) regulate

211. ABATE

- (1) rise
- (2) gear
- (3) hurl
- (4) lessen
- (5) retreat

212. EMERGING

- (1) raising
- (2) developing
- (3) noticeable
- (4) conspicuous
- (5) uproaring

Directions (213-215) :

Choose the word/group of words which is **MOST OPPOSITE** in meaning to the word/group of words printed in **bold** as used in the passage.

213. MYRIAD

- (1) trivial
- (2) difficult
- (3) few
- (4) effortless
- (5) countless

214. TEPID

- (1) moderate
- (2) high
- (3) warm
- (4) irregular
- (5) little

215. MYTH

- (1) reality
- (2) belief
- (3) contrast
- (4) idealism
- (5) falsehood

Directions (216 - 220) : Rearrange the following six sentences (A), (B), (C), (D), (E) and (F) in the proper sequence to form a meaningful paragraph; then answer the questions given below them.

- (A) If China is the world's factory, India has become the world's outsourcing centre - keeping in line with this image.
- (B) But India's future depends crucially on its ability to compete fully in the Creative Economy - not just in tech and software, but across design and entrepreneurship; arts, culture and entertainment; and the knowledge-based professions of medicine, finance and law.
- (C) While its creative assets outstrip those of other emerging competitors, India must address several challenges to increase its international competitiveness as the world is in the midst of a sweeping transformation.
- (D) This transformation is evident in the fact that the world is moving from an industrial economy to a Creative Economy that generates wealth by harnessing intellectual labour, intangible goods and human creative capabilities.
- (E) Its software industry is the world's second-largest, its tech outsourcing accounts for more than half of the \$ 300 billion global industry, according to a technology expert.
- (F) If the meeting of world leaders at Davos is any indication, India is rapidly becoming an economic 'rock star'.
216. Which of the following should be the **SIXTH (LAST)** sentence after the rearrangement ?
 (1) A (2) B
 (3) C (4) D
 (5) E
217. Which of the following should be the **THIRD** sentence after the rearrangement ?
 (1) A (2) B
 (3) C (4) D
 (5) E
218. Which of the following should be the **FIFTH** sentence after the rearrangement ?

- (1) A (2) B
 (3) C (4) F
 (5) E

219. Which of the following should be the **FIRST** sentence after the rearrangement ?

- (1) F (2) B
 (3) C (4) A
 (5) E

220. Which of the following should be the **SECOND** sentence after the rearrangement ?

- (1) A (2) B
 (3) C (4) D
 (5) F

Directions (221 - 225) : The following questions consist of a single sentence with one blank only. You are given six words denoted by A, B, C, D, E and F as answer choices and from the six choices you have to pick two correct answers, either of which will make the sentence meaningfully complete.

221. _____ before the clock struck 8 on Saturday night, India Gate was swamped with people wearing black tee-shirts and holding candles.

- (A) Minutes (B) Time
 (C) Later (D) Quickly
 (E) Since (F) Seconds

- (1) (B) and (E) (2) (A) and (C)
 (3) (A) and (F) (4) (B) and (D)
 (5) (C) and (E)

222. The States should take steps to _____ the process of teachers' appointments as the Centre has already sanctioned six lakh posts.

- (A) fasten (B) move
 (C) hasten (D) speed
 (E) early (F) quicken

- (1) (D) and (F) (2) (A) and (C)
 (3) (C) and (F) (4) (D) and (E)
 (5) (B) and (D)

223. A senior citizen's son _____ threatened her every day and physically harmed her, forcing her to transfer her property to him.

- (A) superficially
 (B) mistakenly
 (C) allegedly
 (D) miserably
 (E) doubtfully
 (F) purportedly

- (1) (C) and (F)
 (2) (A) and (E)
 (3) (C) and (E)
 (4) (D) and (F)
 (5) (A) and (C)

224. Medical teachers said that the management had continued to remain _____ to their cause leading to the stretching of their strike.

- (A) unmoved (B) lethargic
 (C) unconcerned
 (D) apathetic
 (E) indifferent
 (F) bored

- (1) (B) and (C) (2) (C) and (F)
 (3) (A) and (E) (4) (A) and (D)
 (5) (D) and (E)

225. The parents had approached the high court to _____ the government order after their children, who passed UKG, were denied admission by a school.

- (A) void (B) quash
 (C) annul (D) stay
 (E) lift (F) post

- (1) (A) and (D) (2) (B) and (C)
 (3) (C) and (E) (4) (E) and (F)
 (5) (C) and (D)

Directions (226 - 235) : Read each sentence to find out whether there is any grammatical error or idiomatic error in it. The error, if any, will be in one part of the sentence. The number of that part is the answer. If there is "No Error" the answer is '5'. (Ignore errors of punctuation if any.)

226. The Government has asked individuals (1) / with income of over Rs. 10 lakhs to (2) / electronic file tax returns for the year 2011 -12, (3) / something which was optional till last year. (4) / No Error (5)

227. The power tariff had already (1) / been increased twice in (2) / the last 15 months and the Electricity Board had also (3) / levied additional monthly charges to consumers. (4) / No Error (5)

228. Despite of curfew (1) / in some areas, minor (2) / communal incidents were reported (3) / from different areas of the walled city. (4) / No Error (5)

229. This comes (1) / at a time (2) / when fund allocation (3) / is been doubled. (4) / No Error (5)
230. As the prison will get (1) / an official telephone facility soon, the prisoners (2) / won't have to make calls in discreet manner (3) / through smuggled mobile phones. (4) / No Error (5)
231. The area was plunged into (1) / darkness mid a wave of (2) / cheering and shouting (3) / slogans like 'Save The Earth'. (4) / No Error (5)
232. The poll contestants approached (1) / the commission complaining that the hoardings (2) / violated the code of conduct (3) / and influenced public perception. (4) / No Error (5)
233. The country has (1) / adequate laws but problems (2) / arise when these are not (3) / implemented in letter or spirit. (4) / No Error (5)
234. The Management feels that (1) / the employees of the organisation are (2) / non-product, and do not want (3) / to work hard. (4) / No Error (5)
235. As far the issue of land encroachment (1) / in villages is concerned, people will (2) / have to make a start from their villages by (3) / sensitising and educating the villagers about this issue. (4) / No Error (5)

Directions (236-240) : Which of the phrases (1), (2), (3) and (4) given below each sentence should replace the phrase given in **bold** in the following sentence to make the sentence grammatically meaningful and correct? If the sentence is correct as it is and 'No correction is required', mark (5) as the answer.

236. US secretary of state made it clear that time **running out** for diplomacy over Iran's nuclear programme and said that talks aimed at preventing Tehran from acquiring a nuclear weapon would resume in April.
(1) runs out
(2) was running out

- (3) ran out
(4) run
(5) No correction required

237. While the war of the generals **rage on**, somewhere in small town India, wonderful things are happening, quietly and minus fanfare.

- (1) rage (2) raging
(3) rages on (4) raged on
(5) No correction required

238. According to WWF, the small island nation of Samoa was **the first in switch off** its lights for Earth Hour.

- (1) first to switch of
(2) the first to switch off
(3) the first of switch off
(4) first in switch of
(5) No correction required

239. The campaign is significant **because not just** the youths are directly appealing to the world but because their efforts challenge the chimera of normalcy in the area.

- (1) not just because
(2) just not because
(3) not just
(4) because just
(5) No correction required

240. The doctor's association has threatened to go on indefinite strike **support of** their teachers.

- (1) on supporting to
(2) to supporting
(3) for support
(4) in support of
(5) No correction required

Directions (241-250) : In the following passage there are blanks, each of which has been numbered. These numbers are printed below the passage and against each, five words/phrases are suggested, one of which fits the blank appropriately. Find out the appropriate word/phrase in each case.

Greenhouse gases are only (241) of the story when it comes to global warming. Changes to one part of the climate system can (242) additional changes to the way the planet absorbs or reflects energy. These secondary changes are (243)

climate feedbacks, and they could more than double the amount of warming caused by carbon dioxide alone. The primary feedbacks are (244) to snow and ice, water vapour, clouds, and the carbon cycle.

Perhaps the most well (245) feedback comes from melting snow and ice in the Northern Hemisphere. Warming temperatures are already (246) a growing percentage of Arctic sea ice, exposing dark ocean water during the (247) sunlight of summer. Snow cover on land is also (248) in many areas. In the (249) of snow and ice, these areas go from having bright, sunlight-reflecting surfaces that cool the planet to having dark, sunlight-absorbing surfaces that (250) more energy into the Earth system and cause more warming.

241. (1) whole (2) part
(3) material (4) issue
(5) most

242. (1) raise (2) brings
(3) refer (4) stop
(5) cause

243. (1) sensed (2) called
(3) nothing (4) but
(5) term

244. (1) due (2) results
(3) reason (4) those
(5) because

245. (1) done (2) known
(3) ruled (4) bestowed
(5) said

246. (1) mastering (2) sending
(3) melting (4) calming
(5) increasing

247. (1) make-shift
(2) ceasing
(3) troubled (4) perpetual
(5) absent

248. (1) dwindling
(2) manufactured
(3) descending
(4) generating
(5) supplied

249. (1) progress (2) reduced
(3) existence (4) midst
(5) absence

250. (1) repel (2) waft
(3) monitor (4) bring
(5) access

SHORT ANSWERS

1. (5)	2. (4)	3. (2)	4. (3)
5. (4)	6. (3)	7. (2)	8. (1)
9. (2)	10. (5)	11. (1)	12. (4)
13. (2)	14. (1)	15. (5)	16. (4)
17. (5)	18. (4)	19. (1)	20. (5)
21. (3)	22. (2)	23. (5)	24. (4)
25. (1)	26. (4)	27. (4)	28. (3)
29. (5)	30. (5)	31. (2)	32. (2)
33. (5)	34. (4)	35. (2)	36. (3)
37. (5)	38. (2)	39. (3)	40. (1)
41. (4)	42. (1)	43. (4)	44. (3)
45. (2)	46. (4)	47. (5)	48. (4)
49. (5)	50. (1)	51. (4)	52. (1)
53. (2)	54. (5)	55. (2)	56. (3)
57. (2)	58. (3)	59. (5)	60. (1)
61. (1)	62. (2)	63. (4)	64. (3)
65. (1)	66. (4)	67. (3)	68. (5)
69. (5)	70. (2)	71. (1)	72. (5)
73. (2)	74. (5)	75. (4)	76. (3)
77. (3)	78. (4)	79. (5)	80. (1)
81. (3)	82. (5)	83. (5)	84. (2)
85. (1)	86. (1)	87. (3)	88. (3)
89. (1)	90. (1)	91. (4)	92. (2)
93. (4)	94. (5)	95. (4)	96. (4)
97. (2)	98. (3)	99. (5)	100. (3)
101. (1)	102. (2)	103. (1)	104. (1)
105. (5)	106. (4)	107. (1)	108. (1)
109. (3)	110. (3)	111. (2)	112. (1)
113. (1)	114. (4)	115. (5)	116. (3)
117. (3)	118. (5)	119. (1)	120. (3)
121. (5)	122. (2)	123. (4)	124. (1)
125. (4)	126. (3)	127. (1)	128. (5)
129. (3)	130. (2)	131. (4)	132. (4)
133. (4)	134. (4)	135. (2)	136. (3)
137. (3)	138. (5)	139. (1)	140. (3)
141. (2)	142. (1)	143. (1)	144. (5)
145. (5)	146. (5)	147. (2)	148. (4)
149. (4)	150. (4)	151. (4)	152. (5)
153. (3)	154. (1)	155. (2)	156. (3)
157. (1)	158. (3)	159. (5)	160. (1)
161. (5)	162. (3)	163. (5)	164. (4)
165. (1)	166. (4)	167. (5)	168. (5)
169. (5)	170. (1)	171. (5)	172. (1)
173. (2)	174. (4)	175. (1)	176. (4)
177. (3)	178. (4)	179. (3)	180. (2)
181. (4)	182. (2)	183. (4)	184. (5)
185. (2)	186. (1)	187. (4)	188. (4)
189. (3)	190. (1)	191. (3)	192. (2)
193. (2)	194. (5)	195. (3)	196. (3)
197. (3)	198. (1)	199. (1)	200. (4)

201. (2)	202. (4)	203. (4)	204. (4)
205. (3)	206. (1)	207. (2)	208. (5)
209. (4)	210. (2)	211. (4)	212. (2)
213. (3)	214. (3)	215. (1)	216. (4)
217. (5)	218. (3)	219. (1)	220. (1)
221. (3)	222. (3)	223. (1)	224. (5)
225. (2)	226. (3)	227. (4)	228. (1)
229. (4)	230. (1)	231. (2)	232. (5)
233. (4)	234. (3)	235. (1)	236. (2)
237. (3)	238. (2)	239. (1)	240. (4)
241. (2)	242. (5)	243. (2)	244. (1)
245. (2)	246. (3)	247. (4)	248. (1)
249. (5)	250. (4)		

EXPLANATIONS

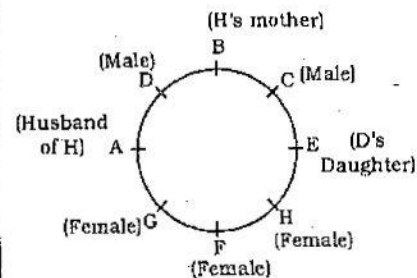
(1-4) :

After careful analysis of the given input and various steps of rearrangement it is evident that in each step one number and one word are rearranged. The lowest number is moved to the left end while the word which will come first in alphabetical order is moved to the right end. In the second step the second lowest number is moved to the left end and the word which will come second in the alphabetical order is moved to the right end. The procedure is continued till all the numbers and words get rearranged accordingly.

Input : 84 why sit 14 32 not best
ink feet 51 27 vain 68 92
Step I : 14 84 why sit 32 not ink
feet 51 27 vain 68 92 best
Step II : 27 14 84 why sit 32 not
ink 51 vain 68 92 best
feet
Step III : 32 27 14 84 why sit not
51 vain 68 92 best feet ink
Step IV : 51 32 27 14 84 why sit
vain 68 92 best feet ink
not
Step V : 68 51 32 27 14 84 why
vain 92 best feet ink not
sit
Step VI : 84 68 51 32 27 14 why 92
best feet ink not sit vain
Step VII : 92 84 68 51 32 27 14 best
feet ink not sit vain why

- (5) There is no such step.
- (4) The word 'best' is at the fifth position from the right in Step V.
- (2) There are three elements - 27, 14 and best - between 'feet' and '32' in the last step of the output.
- (3) The word 'why' is sixth from the left and ninth from the right in the Step IV.

(5-11) :



- (4) A's wife is H. H's mother is B. Therefore, B is the mother-in-law of A. A is second to the right of B.
- (3) E is the daughter of D.
- (2) A is the father of F and G. G is the mother of C. Therefore, C is the grandchild of A. A is third to the right of C.
- (1) D is brother-in-law of A. A is father of F and G. Therefore, D is maternal uncle of G. There is only one person between G and D is clockwise direction.
- (2) Except C, all others are females.
- (5) B is the mother of H. C is the nephew of E. A is the husband of H. A is third to the left of H. Both the neighbours of C are females. F and G are daughters of H.
- (1) B sits to the immediate left of C. B is grandmother of F.

(12-18) :

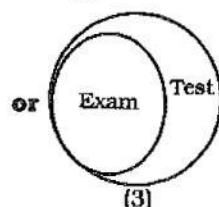
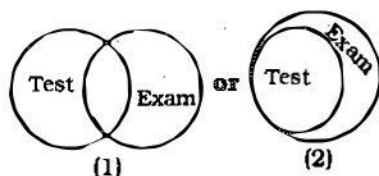
- All forces are energies → Universal Affirmative (A-type).
- Some exams are tests → Particular Affirmative (I-type).
- No exam is a question → Universal Negative (E-type).
- Some exams are not questions → Particular Negative (O-type).

12. (4) Some tests are exams.

No exam is a question.

$I + E \Rightarrow O$ -type of Conclusion.
"Some tests are not questions".
The Converse of the first Premise is "Some tests are exams."

It can be illustrated with the help of Venn Diagrams as follows :



Therefore, Conclusion II does not follow.

(13-14) :

All forces are energies.

All energies are powers.

$A + A \Rightarrow A$ -type of Conclusion
"All forces are powers" (P)

All energies are powers.

No power is heat.

$A + E \Rightarrow E$ -type of Conclusion
"No energy is heat." (Q)

All forces are powers.

No power is heat.

$A + E \Rightarrow E$ -type of Conclusion
"No force is heat". (R)

13. (2) "All forces are powers" has been derived from the first and the second Premises. Therefore, Conclusion I does not follow.

Conclusion II is the Converse of Conclusion (R).

14. (1) Conclusion I is the Conclusion (Q).

As no force is heat, so Conclusion II does not follow.

(15-16) :

No note is a coin.

Some coins are metals.

$E + I \Rightarrow O_1$ -type of Conclusion
"Some metals are not notes." (P)

All plastics are notes.

No note is a coin.

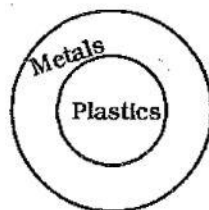
$A + E \Rightarrow E$ -type of Conclusion
"No plastic is a coin". (Q)

No plastic is a coin.

Some coins are metals.

$E + I \Rightarrow O_1$ -type of Conclusion
"Some metals are not plastics." (R)

15. (5) Conclusion I is the Converse of the Conclusion (Q). The Venn Diagrams of Conclusion (R) :



It means some portion of metals lies beyond the limit of plastics. It also implies that all plastics are metals. Therefore, Conclusion II also follows.

16. (4) Neither Conclusion I nor Conclusion II follows.

17. (5) Some figures are symbols.

All symbols are graphics.

$I + A \Rightarrow I$ -type of Conclusion
"Some figures are graphics."
Conclusion I is Converse of it.

All symbols are graphics.

No graphic is a picture.

$A + E \Rightarrow E$ -type of Conclusion
"No symbol is a picture."

This is Conclusion II.

18. (4) All vacancies are jobs.

Some jobs are occupation.

$A + I \Rightarrow$ No Conclusion

(19-21) :

$B, D, F > C > A, E$

$B > D > F > C > A, E$

$B > D > F > C > E > A$

Score of F = 81

Score of E = 62

19. (1) C scored more than 62 and less than 81.

$62 < 70 < 81$

20. (5) D's score was more than 81.

B scored the maximum marks.
Three people, B, D and F scored more than C.

B scored more than 81 marks.

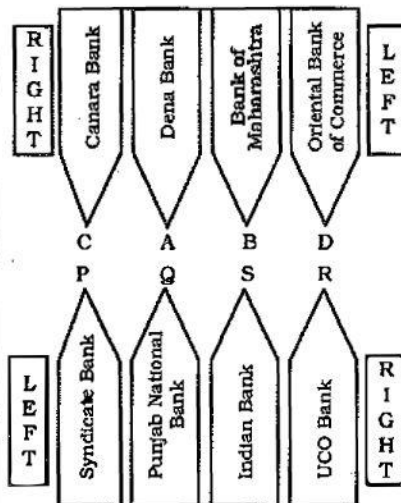
21. (3) Score of F = 81

Score of B = 81 + 13 = 94

Therefore, score of D = more than 81 and less than 94

$81 < 89 < 94$

(22 - 29) :



22. (2) The person from Punjab National Bank, Q faces A. B is from Bank of Maharashtra and he is a immediate neighbour of A.

A faces the person who sits second to the left of R.
A is from Dena Bank.
A sits third from the left and second from the right.

23. (5) S is seated between R and Q, the person from Punjab National Bank.

24. (4) Persons at the extreme ends:
C from Canara Bank; D from Oriental Bank of Commerce; P from Syndicate Bank; R from UCO Bank.

25. (1) S from Indian Bank faces B from Bank of Maharashtra.

26. (4) P faces the immediate neighbour of A from Dena Bank.
B faces the immediate neighbour of Q from Punjab National Bank.

Similarly, D faces immediate neighbour of S from Indian Bank.

27. (4) Except Q, all others are seated at the extreme ends of the lines.

28. (3) P is from Syndicate Bank.

29. (5) C is from Canara Bank.

30. (5) From statements I, II and III

Floor No.	Person
6	P
5	T
4	R
3	S
2	Q
1	V

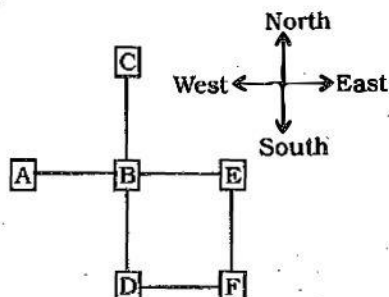
31. (2) From statements I and III

1 2 3 4 5 6

A S E

A N S W E R

32. (2) From statements I and III



33. (5) From statements I and II

one of its kind → zo pi ko fe
in kind and cash → ga to ru ko
its point for origin → ba le fe mi
make a point clear → yu si mi de

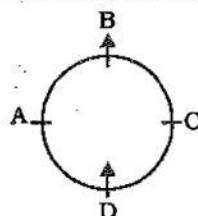
From statements I and III

one of its kind → zo pi ko fe
in kind and cash → ga to ru ko
make money and cash → to mi ru hy
money of various kind → qu ko zo hy

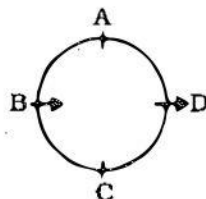
From statements I, II and III

one of its kind → zo pi ko fe
in kind and cash → ga to ru ko
its point for origin → ba le fe mi
make a point clear → yu si mi de
make money and cash → to mi ru hy
money of various kind → qu ko zo hy

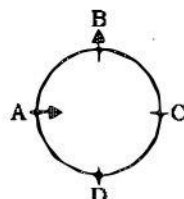
34. (4) From statement I



From statement II



From statement III



35. (2) It is clear from the statement that a farm's areas for organic and chemical farming are different.

36. (3) There is a perception among small brands that sale in a supermarket is higher than that of small grocery stores.

37. (5) The statement clearly implies that smaller brands are currently making substantial losses in their businesses. Consider the term "troubled waters."

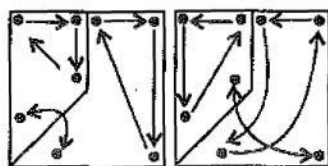
38. (2) Statement (C) represents a disadvantage of the small grocery stores over the Supermarkets from the perspective of a smaller brand. Small grocery stores do not help in distribution of any brand.

39. (3) Statement (D) represents a reason for the shift from local grocery stores to supermarkets by the smaller brands.

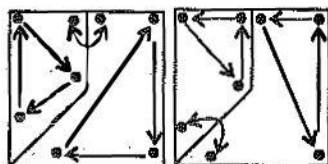
40. (1) Statement (A) will prove that that step taken by the smaller brands may not necessarily be correct.

41. (4) In the subsequent figures two and three designs are inverted alternately. From Problem Figure (1) to (2) the first and the second designs from the top interchange positions and the lowermost design moves to the middle position. From Problem Figure (2) and (3) the lowermost design moves to the top and the second design from the top moves to the lowermost position while the third and the fourth designs interchange positions. From Problem Figure (3) to (4) the topmost and the lowermost designs interchange positions and the fourth design moves to the second position. From Problem Figure (4) to (5) the topmost design moves to the fourth position, the lowermost design moves to the topmost position while the second and the third designs interchange positions. Therefore, from Problem Figure (5) to Answer Figure the third and the fourth designs would interchange positions and would be inverted, the lowermost design would move to the top position and the second design from the top would move to the lowermost position.

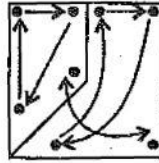
42. (1) The following changes occur in the subsequent figures :
(1) to (2) (2) to (3)



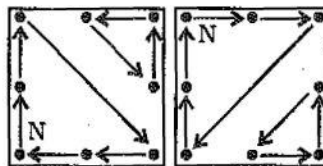
(3) to (4) (4) to (5)



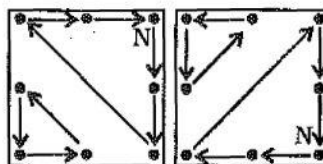
(5) to (6)



43. (4) From Problem Figure (1) to (2) and from Problem Figure (5) to Answer Figure the smaller square with four designs moves two steps in anticlockwise direction and the designs in each row interchange positions. The other three designs move two steps in clockwise direction.
44. (3) The following changes occur in the subsequent figures :
(1) to (2) (2) to (3)
(5) to (6)

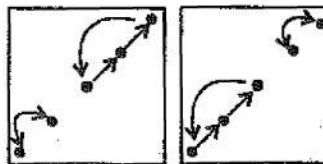


(3) to (4) (4) to (5)

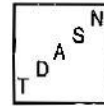


45. (2) From Problem Figure (1) to (2) the plane of designs rotates through 90° clockwise and the second and the fifth designs interchange positions. Similarly, the third and the fourth designs interchange positions. Similar changes occur from Problem Figure (3) to (4) and from Problem Figure (5) to Answer Figure.

46. (4) The following changes occur in the subsequent figures :
(1) to (2) (2) to (3)
(3) to (4) (4) to (5)



In Figure (4) the arrangement of designs would be as follows :



47. (5) The line segment with cross rotates respectively through $45^\circ, 90^\circ, 135^\circ, 180^\circ, \dots$ in clockwise direction.
48. (4) In each subsequent figure the designs move in clockwise direction and the number of designs at a particular position is fixed. Again, a new design appears at the lower right side. In figure (4), there should be design (L) in the place of circle at the lower right side.
49. (5) In the subsequent figures respectively one, two, three, four curves are inverted in a set order. In Figure (5) five curves have been inverted.
50. (1) In the first step the outer part of upper design moves inside the lower design and new designs appear at the upper and lower positions. In the second step, the outer part of lower design moves inside the upper design and new designs appear at both the upper and lower positions. In Figure (1) there should be another design at the lower side.

$$\begin{aligned} 51. (4) & 4003(70 + 7) - 21015 \\ &= ? \times 116 \\ &\Rightarrow 280210 + 28021 - 21015 \\ &= ? \times 116 \\ &\Rightarrow 287216 = ? \times 116 \\ &\Rightarrow ? = 287216 \div 116 = 2476 \end{aligned}$$

$$\begin{aligned} 52. (1) ? &= 6\sqrt{7} \times 12\sqrt{7} - (19)^2 \\ &= 504 - 361 = 143 \end{aligned}$$

$$\begin{aligned} 53. (2) ? &= \frac{4444}{40} + \frac{645}{25} + 3991 + 26 \\ &= 111.1 + 25.8 + 153.5 \\ &= 290.4 \end{aligned}$$

$$\begin{aligned} 54. (5) & \sqrt{33124} \times \sqrt{2601} - (83)^2 \\ &= ?^2 + (37)^2 \\ &\Rightarrow 182 \times 51 - 6889 = ?^2 + 1369 \\ &\Rightarrow 2393 = ?^2 + 1369 \\ &\Rightarrow ?^2 = 2393 - 1369 = 1024 \\ &\Rightarrow ? = \sqrt{1024} = 32 \end{aligned}$$

$$55. (2) ? = \frac{202}{37} \times \frac{259}{52} \times \frac{78}{7} + 2.75$$

$$= 303 + 2.75 = 305.75$$

$$56. (3) 8800 + 340 \times \sqrt{50} = ?$$

$$[\because 8787 \approx 8800; 343 \approx 340]$$

$$\Rightarrow ? = 25.9 \times 7 \approx 180$$

$$57. (2) ?^2 = \sqrt[3]{54821} \times (303 + 8)$$

$$= \sqrt[3]{55000} \times 38$$

$$\approx 38 \times 38 = ? = 38$$

$$58. (3) ? = \frac{401133 \times 5}{8} + \frac{341122 \times 7}{10}$$

$$\approx \frac{4000 \times 5}{8} + \frac{3400 \times 7}{10}$$

$$\approx 2500 + 2380 \approx 4880$$

$$\therefore \text{Required answer} = 4890$$

$$59. (5) ? = \frac{6783 \times 23}{100} + \frac{8431 \times 57}{100}$$

$$= \frac{6800 \times 23}{100} + \frac{8400 \times 57}{100}$$

$$\approx 1564 + 4788 \approx 6352$$

$$\therefore \text{Required answer} = 6360$$

$$60. (1) ? = 335 \times 245 \div 55$$

$$\approx 1490$$

$$61. (1) \text{ The pattern is :}$$

$$5531 - 5506 = 25 = 5^2$$

$$5555 - 5506 = 49 = 7^2$$

$$5506 - 5425 = 81 = 9^2$$

$$5425 - 5304 = 121 = 11^2$$

$$5304 - 5135 = 169 = 13^2$$

$$5135 - 4910 = 225 = 15^2$$

$$4910 - 4621 = 289 = 17^2$$

Clearly, 5531 is wrong which should be substituted by 5555.

$$62. (2) \text{ The pattern is :}$$

$$6 + 1 = 7$$

$$7 + 1 \times 2 = 9$$

$$9 + 2 \times 2 = 13$$

$$13 + 8 = 21 \neq \boxed{26}$$

$$21 + 16 = 37$$

$$37 + 32 = 69$$

$$63. (4) \text{ The pattern is :}$$

$$1 \times 1 + 2 = 3$$

$$3 \times 2 + 4 = 10$$

$$10 \times 3 + 6 = 36$$

$$36 \times 4 + 8 = 152$$

$$152 \times 5 + 10 = 770 \neq \boxed{760}$$

$$770 \times 6 + 12 = 4632$$

$$64. (3) \text{ The pattern is :}$$

$$4 + 1^3 = 5$$

$$5 + 2^3 = 13$$

$$13 + 3^3 = 40$$

$$40 + 4^3 = 104 \neq \boxed{105}$$

$$104 + 5^3 = 229$$

$$229 + 6^3 = 445$$

$$65. (1) \text{ The pattern is :}$$

$$157.5 \div 3.5 = 45$$

$$45 \div 3 = 15$$

$$15 \div 2.5 = 6$$

$$6 \div 2 = 3$$

$$3 \div 1.5 = 2$$

$$2 + 1 = 2 \neq \boxed{1}$$

$$66. (4) \text{ Speed of vehicle B :}$$

$$\text{First day} \Rightarrow \frac{516}{12} = 43 \text{ kmph}$$

$$\text{Second day} \Rightarrow \frac{774}{18} = 43 \text{ kmph}$$

$$67. (3) \text{ Required difference}$$

$$= \left(\frac{693}{11} - \frac{832}{16} \right) \text{ kmph}$$

$$= 63 - 52 = 11 \text{ kmph}$$

$$68. (5) \text{ Required speed of vehicle of C}$$

$$= \left(\frac{810}{18} \right) \text{ kmph}$$

$$= \left(\frac{810}{18} \times \frac{5}{18} \right) \text{ m/sec.}$$

$$= 12.5 \text{ m/sec.}$$

$$69. (5) \text{ Required percentage}$$

$$= \frac{636}{703} \times 100$$

$$\approx \frac{640}{700} \times 100 \approx 90$$

$$70. (2) \text{ Required ratio}$$

$$= \frac{765}{15} : \frac{546}{14}$$

$$= 51 : 39 = 17 : 13$$

$$71. (1) \text{ Gain per cent}$$

$$= \left(30 - 20 - \frac{30 \times 20}{100} \right) \%$$

$$= 4\%$$

$$72. (5) \frac{9-x}{15-x} = \frac{15-x}{27-x}$$

$$\Rightarrow 243 - 9x - 27x + x^2$$

$$= 225 - 30x + x^2$$

$$\Rightarrow 6x = 243 - 225 = 18$$

$$\Rightarrow x = 3$$

$$73. (2) \text{ Difference} = \frac{P \times R^2}{(100)^2}$$

$$= \frac{7300 \times 36}{10000}$$

$$= \text{Rs. } 26.28$$

$$74. (5) \text{ Second number}$$

$$= \frac{2262}{3} = 754$$

$$\therefore \text{Largest number} = 755$$

$$\therefore 41\% \text{ of } 755$$

$$= \frac{755 \times 41}{100} = 309.55$$

$$75. (4) \text{ The word THERAPY consists of 7 distinct letters in which E, A are two vowels.}$$

We get THRPY (EA) keeping EA together as single entity.

Number of permutations when vowels are together

$$= 6! \times 2! = 1440$$

$$\therefore \text{Required number of arrangements}$$

$$= 7! - 1440$$

$$= 5040 - 1440$$

$$= 3600$$

$$76. (3) \text{ Required ratio}$$

$$= \frac{17 \times 7}{15} : \frac{9 \times 16}{16}$$

$$= 17 \times 7 : 9 \times 15$$

$$= 119 : 135$$

$$77. (3) \text{ Number of mobile phones sold by Company A during November}$$

$$= 45000 \times \frac{12}{100} \times \frac{7}{15} = 2520$$

\therefore Number of mobile phones sold without discount

$$= \frac{2520 \times 65}{100} = 1638$$

$$78. (4) \text{ Total number of mobile phones sold by company B during October}$$

$$= 45000 \times \frac{8}{100} \times \frac{5}{12} = 1500$$

$$\therefore \text{Total earned profit} \\ = 1500 \times 433 = \text{Rs. } 649500$$

79. (5) Mobile phones sold by company A :

$$\text{July} \Rightarrow 45000 \times \frac{17}{100} \times \frac{8}{15} \\ = 4080$$

$$\text{December} \Rightarrow 45000 \times \frac{16}{100} \times \frac{7}{16}$$

$$= 3150$$

Required percentage

$$= \frac{4080}{3150} \times 100 \approx 130$$

80. (1) Mobile phones sold by company B :

$$\text{August} \Rightarrow \frac{5}{9} \times 45000 \times \frac{22}{100}$$

$$= 5500$$

September

$$\Rightarrow \frac{2}{5} \times 45000 \times \frac{25}{100} = 4500$$

$$\text{Sum} = 5500 + 4500 \\ = 10000$$

81. (3) Total cost of wooden flooring

$$= \text{Rs. } (23 \times 29 + 13 \times 17) \times 170$$

$$= \text{Rs. } (667 + 221) \times 170$$

$$= \text{Rs. } 150960$$

Total cost of marble flooring

$$= \text{Rs. } (14 \times 13 + 21 \times 13 + 29 \times 21) \times 190$$

$$= \text{Rs. } (182 + 273 + 609) \times 190$$

$$= \text{Rs. } 202160$$

\therefore Required ratio

$$= 150960 : 202160$$

$$= 1887 : 2527$$

82. (5) Area of ceiling and four walls of branch manager's room

$$= 13 \times 17 + 2 \times 12 (13 + 17)$$

$$= 221 + 720 = 941 \text{ sq. metre}$$

$$\therefore \text{Total cost} = 941 \times 190 + 13 \times 17 \times 170$$

$$= \text{Rs. } (178790 + 37570)$$

$$= \text{Rs. } 216360$$

83. (5) Area of wooden floors

$$= 667 + 221$$

$$= 888 \text{ sq. metre}$$

Area of marble floors

$$= 182 + 273 + 609$$

$$= 1064 \text{ sq. metre}$$

$$\text{Total area} = 1064 + 888$$

$$= 1952 \text{ sq. metre}$$

$$\text{Remaining area} = 2000 - 1952$$

$$= 48 \text{ sq. metre}$$

$$\therefore \text{Required cost} = 48 \times 110$$

$$= \text{Rs. } 5280$$

84. (2) Required percentage

$$= \frac{48}{2000} \times 100 = 2.4$$

85. (1) Required cost = Rs. $(23 \times 29 \times 170 + 29 \times 21 \times 190)$

$$= \text{Rs. } (113390 + 115710)$$

$$= \text{Rs. } 229100$$

86. (1) Let the amount be Rs. x .

$$\therefore \left(\frac{3}{9} - \frac{2}{14} \right) x = 40$$

$$\Rightarrow \left(\frac{1}{3} - \frac{1}{7} \right) x = 40$$

$$\Rightarrow \left(\frac{7-3}{21} \right) x = 40$$

$$\Rightarrow x = \frac{40 \times 21}{4} = \text{Rs. } 210$$

87. (3) Look :

Ice-creams + Cookies + Pastries = 32

$$\Rightarrow 9 + 11 + 12 = 32$$

$$\text{or, } 9 + 10 + 13 = 32$$

$$10 + 11 + 12 \neq 32$$

88. (3) According to the question,

$$x + 182 \times 13 = 2402$$

$$\Rightarrow x + 2366 = 2402$$

$$\Rightarrow x = 2402 - 2366$$

$$= \text{Rs. } 36$$

89. (1) Second number

$$= \frac{4032}{252} = 16$$

$$\therefore \text{Required answer}$$

$$= 5 \times 16 = 80$$

90. (1) Sum of the present ages of old family = $94 + 20$

$$= 114 \text{ years}$$

$$\text{Father} + \text{Mother} + \text{Son} + \text{Daughter-in-law} = 92 \text{ years}$$

$$\text{Required difference}$$

$$= 114 - 92 = 22 \text{ years}$$

91. (4) Total possible outcomes

$$= 20C_2 = \frac{20 \times 19}{1 \times 2} = 190$$

Total favourable outcomes

$$= 13C_2 + 7C_2$$

$$= \frac{13 \times 12}{1 \times 2} + \frac{7 \times 6}{1 \times 2}$$

$$= 78 + 21 = 99$$

$$\therefore \text{Required probability} = \frac{99}{190}$$

92. (2) Marks obtained by Akash in subject B

$$= \frac{150 \times 56}{100} = 84$$

Total marks obtained by Akash

$$= \frac{450 \times 54}{100} = 243$$

\therefore Marks obtained in subject C

$$= 243 - 73 - 84 = 86$$

93. (4) Side of square

$$= \sqrt{1444} = 38 \text{ metre}$$

Breadth of rectangle

$$= \frac{1}{4} \times 38 = \frac{19}{2} \text{ metre}$$

Length of rectangle

$$= \frac{57}{2} \text{ metre}$$

Required difference

$$= 1444 - \frac{19}{2} \times \frac{57}{2}$$

$$= 1444 - 270.75$$

$$= 1173.25 \text{ sq. metre}$$

94. (5) Required difference

$$= \left(\frac{7}{11} \times 2 - \frac{4}{11} \times 3 \right) \times 73689$$

$$= \frac{2}{11} \times 73689 = \text{Rs. } 13398$$

95. (4) (A + B)'s 1 day's work = $\frac{1}{20}$

$$(B + C)'s 1 \text{ day's work} = \frac{1}{30}$$

$$(C + A)'s 1 \text{ day's work} = \frac{1}{40}$$

On adding,
2(A + B + C)'s 1 day's work

$$= \frac{1}{20} + \frac{1}{30} + \frac{1}{40}$$

$$= \frac{6+4+3}{120} = \frac{13}{120}$$

∴ (A + B + C)'s 1 day's work

$$= \frac{13}{240}$$

∴ A's 1 day's work

$$= \frac{13}{240} - \frac{1}{30} = \frac{13-8}{240}$$

$$= \frac{5}{240} = \frac{1}{48}$$

C's 1 day's work

$$= \frac{13}{240} - \frac{1}{20} = \frac{13-12}{240} = \frac{1}{240}$$

∴ Required ratio = 48 : 240

$$= 1 : 5$$

96. (4) Required percentage increase

$$= \frac{700-550}{550} \times 100 = 27$$

97. (2) Required percentage

$$= \frac{400}{550} \times 100 \approx 73$$

98. (3) Total production of company B

$$= \left(\frac{4}{5} \times 750 + \frac{7}{8} \times 800 + \frac{4}{3} \times 600 + \frac{12}{11} \times 550 + \frac{13}{14} \times 700 + \frac{14}{13} \times 650 \right)$$

tonnes

$$= (600 + 700 + 800 + 600 + 650$$

$$+ 700) \text{ tonnes}$$

$$= 4050 \text{ tonnes}$$

Required average

$$= \frac{4050}{6} = 675 \text{ tonnes}$$

99. (5) Required ratio

$$= 4050 : 2750 = 81 : 55$$

100. (3) Required ratio = 600 : 800

$$= 3 : 4$$

101. (1) Term Deposit is a money deposit at a banking institution that cannot be withdrawn for a preset fixed 'term' or period of time. When the term is

over it can be withdrawn or it can be rolled over for another term.

102. (2) Society for Worldwide Interbank Financial Telecommunication supplies secure messaging services and interface software to wholesale financial entities.

103. (1) The latest proposal, evolved jointly by the Ministry of Rural Development and the Planning Commission, envisages a concerted effort by the Centre, the State governments concerned, and civil society to transform the lives of the tribals, in what has been described as the Central Indian Adivasi Belt.

104. (1) The UN Human Rights Council passed a resolution urging Sri Lanka to "credibly investigate" allegations of violations during the war against Tamil Tiger separatists in 2009. India voted against Sri Lanka on the resolution after pressure from political parties like the DMK and AIADMK on the issue.

105. (5) SMART Money is an electronic wallet, similar to a bank account, that allows one to do bills payment, reload of airtime, and money transfers using a SMART Mobile phone. With the SMART Money MasterCard, one can also do ATM and debit card transactions.

106. (4) The common money market instruments are certificate of deposit, repurchase agreements, commercial paper, federal funds, municipal notes, treasury bills, money funds, foreign exchange swaps, etc.

107. (1) Retail banking refers to the consumer-oriented services offered by commercial banks. These services include checking and savings accounts, mortgages and various types of loans and investment services relating to retirement and educational planning. Some of its products are credit card, debit

card, home equity loan, mutual fund, personal loan, time deposits, etc.

108. (1) A presidential election was to be held in Mali on April 29, 2012, but following the 2012 Malian coup d'etat, the election schedule remains uncertain. A presidential election must take place in Mali in 2012 according to the 1992 constitution.

109. (3) Twenty-five of the European Union's 27 member states agreed to join a fiscal treaty to enforce budget discipline. The Czech Republic and the UK refused to sign up.

110. (3) The Department of Atomic Energy (DAE) and the Nuclear Power Corporation of India Ltd. (NPCIL) plan to use slightly enriched uranium (SEU) in the future 700 MWe Pressurised Heavy Water Reactors (PHWRs) instead of the current technology of using natural uranium as the fuel in all the PHWRs of Indian nuclear programme until now.

111. (2) Most of the technological advancements are seen in the service delivery mechanism. Direct Cash Transfer, strengthening of accountability for improved service delivery, online banking, mobile banking, SMS banking are some aspects of the changed banking environment.

112. (1) The excess of Government's revenue expenditure over revenue receipts constitutes revenue deficit of Government. Government mainly borrows through issue of dated securities, i.e. market borrowings.

113. (1) The main functions of the Reserve Bank of India are: monetary authority, regulator and supervisor of the financial system, manager of foreign exchange, issuer of currency, developmental role, and related functions. Fiscal policy functions belong to the government of India.

- 114.** (4) The basic documents required in opening a Bank account are: identity proof documents; address proof documents; recent photographs. Domicile certificate is not required.
- 115.** (5) Prime Minister Manmohan Singh inaugurated the 50th anniversary celebrations of the Afro-Asian Rural Development Organisation (AARDO) in New Delhi in March 2012.
- 116.** (3) Each depositor in a bank is insured upto a maximum of Rs. 1,00,000 (Rupees One Lakh) for both principal and interest amount held by him in the same right and same capacity as on the date of liquidation/cancellation of bank's licence or the date on which the scheme of amalgamation/merger/reconstruction comes into force.
- 117.** (3) The Foreign Trade Policy (FTP), 2009-14 was announced on 27th August, 2009 in the backdrop of a fall in India's exports due to global slowdown.
- 118.** (5) Drawee Banks is a bank named in a letter of credit on whom drafts are to be drawn for payment.
- 119.** (1) Real time gross settlement systems (RTGS) are funds transfer systems where transfer of money or securities takes place from one bank to another on a "real time" and on "gross" basis. Settlement in "real time" means payment transaction is not subjected to any waiting period. The transactions are settled as soon as they are processed.
- 120.** (3) Enrica Lexie is an Italian Aframax oil-tanker involved in the shooting of two fisherman at Indian coast on 15 February, 2012.
- 121.** (5) On February 27, 2012, while giving the go-ahead to the controversial project of inter-linking of rivers, the Supreme Court specifically mentioned the benefits — flood control and drought moderation as plans for inter-basin transfers of water across vast distances, from surplus to deficit areas.
- 122.** (2) Australian captain Michael Clarke was named the player of the series, having scored 626 runs at an average of 125.20.
- 123.** (4) The panel, headed by former Reserve Bank of India deputy governor, Shyamala Gopinath, gave its report in June 2011. Among other decisions, the maturity period for Monthly Income Scheme (MIS) and NSC will be reduced from six years to five years.
- 124.** (1) The Ombudsman scheme is applicable to all scheduled commercial banks having business in India and scheduled primary co-operative banks except Regional Rural Banks.
- 125.** (4) The 5th Asian Indoor Athletics Championships was held in Hangzhou, China.
- 126.** (3) The government decided to nationalize 14 major commercial banks on 19th July, 1969. It was considered that banks were controlled by business houses and thus failed in catering to the credit needs of poor sections such as cottage industry, village industry, farmers, craft men, etc.
- 127.** (1) Kamla Persad-Bissessar is the Prime Minister of the Republic of Trinidad and Tobago, the seventh person to hold this position.
- 128.** (5) Ms. Chanda Kochhar is the Managing Director and Chief Executive Officer of ICICI Bank Limited.
- 129.** (3) The secured portion of advances which have remained in "doubtful" category for more than one year but upto 3 years will attract a provision of 40 per cent (as against the existing 30 per cent).
- 130.** (2) The Bill shifts from the present quota of 35 kg per family to an individual-based system fixed at a monthly quota of 7 kg per person for a BPL family.
- 131.** (4) It includes right to admit students and set up reasonable fee structure. Going by the average fee calculations the government has to reimburse Rs. 90 crore in the first year. It will increase every year as the classes increase along with number of students.
- 132.** (4) The Madhya Pradesh Panch Parmeshwar Yojna will help in receiving the village Panchayats a one-time amount based on the population which will be from Rs 5 lakh to 15 lakh and the equal amount will be received from NREGA.
- 133.** (4) RBI sets benchmark for banks' base rate. The Reserve Bank of India (RBI) recently said the new benchmark lending regime, called base rate, will be effective from July 1, but gave banks time till December 31 to change and fine-tune the method of calculating the new rate.
- 134.** (4) The 3rd National and Inter State Table Tennis Championships was held at SAI Sub-Centre, Lucknow.
- 135.** (2) Nirbasan which means 'exile,' is the autobiography of Taslima Nasrin.
- 136.** (3) A debit card (also known as a bank card or check card) is a plastic card that provides the cardholder electronic access to his or her bank account(s) at a financial institution. Some cards have a stored value with which a payment is made, while most relay a message to the cardholder's bank to withdraw funds from a designated account in favor of the payee's designated bank account.
- 137.** (3) Veteran star Leander Paes created history by becoming the first Indian to complete a career Grand Slam by winning the Australian Open men's doubles title with Radek Stepanek, taming the dangerous top seeds Bob and Mike Bryan in straight sets.

- 138.** (5) It is a nuclear-powered attack submarine (SSN) first deployed by the Soviet Navy in 1986. Three hundred Indian Navy personnel are being trained in Russia for the operation of the Akula II submarine Nerpa. India has finalized a deal with Russia, in which at the end of the lease of these submarines, it has an option to buy them. The submarine will be named INS Chakra.
- 139.** (1) Mario Miranda was posthumously awarded the Padma Vibhushan, the second highest civilian award in the Republic of India, by the President on 4 April, 2012.
- 140.** (3) Banks are reeling under the stress of bad loans, called non-performing assets.
- 141.** (2) It is an Indian financial services firm that had begun operations in 1994, after the Government of India allowed new private banks to be established.
- 142.** (1) Repo rate is the rate at which RBI lends money to all the banks. So if RBI hikes its repo rate, it becomes costly for banks to borrow money from RBI so they in turn hike the rates at which customers borrow money from them to compensate for the hike in repo rate.
- 143.** (1) There are several reasons that an increase in GDP can lead to a rise in interest rates. For one, when an economy is booming, more investors will be investing money in it. This increased demand for funds can lead to lenders asking for higher interest rates. Secondly, as an economy booms, inflation will generally increase. This will lead to an increase in the interest rate commanded by lenders, so as to keep pace with inflation.
- 144.** (5) Swavalamban Yojana seeks to provide pension scheme to the unorganised sector in India. It will be applicable to all citizens in the unorganised sector who join the New Pension System (NPS) administered by the Interim Pension Fund Regulatory and Development Authority (PFRDA).
- 145.** (5) The 10th Basic Ministerial Meeting on Climate Change was held in New Delhi, India, in February 2012. It concluded with the adoption of a joint statement in which ministers indicated their "firm opposition" to the inclusion of international aviation in the EU Emissions Trading Scheme (EUETS).
- 146.** (5) The Reserve Bank of India has decided to permit non-bank entities to set up, own and operate automated teller machines (ATMs). Non-bank entities that intend setting up, owning and operating 'White Label ATMs' (WLAs) would serve customers of banks in India, based on the cards (debit/credit/prepaid) issued by banks.
- 147.** (2) Rajiv Gandhi Grameen Vidyutikaran Yojana (RGGVY) was launched in April 2005 by merging all ongoing schemes. It is targeted to electrify 1.15 lakh un-electrified villages, intensively electrify 3.41 lakh electrified villages and to provide free electricity connection to 2.34 crore BPL households in these villages.
- 148.** (4) In 2011, Kapoor starred and earned critical acclaim for his performance in Rockstar for which he received the Best Actor and Best Actor (Critics) awards at the Filmfare ceremony.
- 149.** (4) Criminal action can be initiated for ECS debit return under Section 25 of Payment and Settlements Act 2007.
- 150.** (4) If complainant is not happy with the decision of the Banking Ombudsman, he can appeal to the appellate authority in the Reserve Bank of India (Deputy Governor of Reserve Bank of India).
- 151.** (4) *Microsoft Office Live* is a free service that facilitates small businesses to store and share the documents online. Using Office live, documents can be viewed as well as edited from remote locations without any flash drive.
- 152.** (5) A page has top, bottom, left and right margins. Top and bottom margins can be set for the vertical alignment of the page. To horizontally center the text on a page, left and right margins are to be set.
- 153.** (3) Instanotes is an online tool for notes taking and saving locally without registering using mail accounts avoiding personal communication. One can simply login using social media networking sites and save the notes which can later be sent to email accounts.
- 154.** (1) Word Processing is a technique to create, edit, format, store, retrieve and print a text document using computer application software called *Word Processor*.
- 155.** (2) Fourth generation mobile technology also known as 4G is a set standard of internet access using broadband access. With higher capacity and completely IP oriented technology in use, 4G is basically the extension in 3G technology with more bandwidth in 3G.
- 156.** (3) In client-server architecture, the client requests a connection to the server by sending SYN (*synchronize*) messages. Responding these requests, server sends the acknowledgement (SYN-ACK) to the client. **SYN flood** is a kind of denial-of-service attack in which an attacker sends a succession of SYN requests to a target's system in an attempt to consume enough server resources to make the system unresponsive to legitimate traffic.

157. (1) Mouse is the only device that points, inputs as well as helps drawing in a Graphical User Interface (GUI). The pointer (generally an arrow) positions the focus on to the pointing object. With help of its buttons, one can drag the coordinates of the shape to be drawn.
158. (3) Cell address is a combination of column name (alphabets from A-Z) and row number such as A10 where A refers to the column name and 10 identifies the row number. A cell address identifies the location of row and column in Excel.
159. (5) To give instructions to a computer, the set of rules for computer operations can be stored in the form of programs using an artificial language called *Programming Language*.
160. (1) Documentation is needed to supplement human memory and to help organize program planning. Typical program documentation materials include the origin and nature of the problem, a brief narrative description of the program, logic tools such as flowcharts and pseudocode, data-record descriptions, program listings, and testing results.
161. (5) Spreadsheets are a computer application software that contains tabular forms. The rows and columns of a spreadsheet make up cells that form a grid. The user enters data in the cells.
162. (3) In PowerPoint 2007, the *Insert* tab contains tables, illustrations, links, text and media groups. Text group offers text elements such as header and footers to be inserted in a presentation.
163. (5) Operating systems are responsible for everything from the control and allocation of memory to recognizing input from external devices and transmitting output to computer displays. They also manage files on computer hard drives and control peripherals, like printers and scanners.
164. (4) Slide layouts contain formatting, positioning, and placeholders for all of the content that appears on a slide. Placeholders are the containers in layouts that hold such content as text (including body text, bulleted lists, and titles), tables, charts, SmartArt graphics, movies, sounds, pictures, and clip art.
165. (1) *Spreadsheets* are computer programs that let you create and manipulate spreadsheets electronically. In a spreadsheet application, each value is stored in a cell. Spreadsheets have a row column format and intersection of a row and column is transformed into a space called cell.
166. (4) In mathematics, a rule is defined to unambiguously which procedures should be performed first known as *operator precedence*. As per *PEMDAS* the precedence of operators is Parentheses, Exponents, Multiplication, Division, Addition, Subtraction. Parentheses or brackets are used to explicitly denote precedence by grouping parts of an expression that should be evaluated first. Thus, to force addition to precede multiplication parenthesis is used.
167. (5) Home tab contains *Clipboard* group which allows to paste the copied or cut content anywhere in original or special formats such as HTML format and Unformatted text.
168. (5) Executable programs are a set of encoded instructions to run an application. These programs are used directly to execute the instructions without making any changes or altering the coding.
169. (5) When a webpage is visited on the Internet, many different types of files are saved automatically to the Temporary Internet Files folder such as HTML, images, JavaScript, style sheets, video files, cookies and more. Cookies contain the data sent from a webpage and downloaded in a user's web browser while a user is browsing a website.
170. (1) In insert mode, we can insert the words/ characters at the current position of the cursor without overwriting the existing content. To insert a word in between a line, place the cursor at the desired position and type the desired word. Before typing make sure that *Insert* key is on else the existing content will be overwritten by the later one.
171. (5) This term is derived from "broadcast" and "pod" (from iPod). It refers to the digital broadcasting of audio files through online streaming and downloading the episodic series of audio files to a computer or mobile phone.
172. (1) Slide sorter is a window based view that reflects a thumbnail version of each slide. This view displays all the slides in a horizontal format and is very useful when any global change is to be made to all the slides of a presentation.
173. (2) Motherboard consists of a set of wires that carries out the communication and establishes connection between various components of the motherboard including CPU. Buses in motherboard are *Internal* and *External*.
174. (4) Multimedia is term given to a combination of different formats of content or information. It means content having different forms and may contain anything that can be seen or listened such as text, pictures, music, sound, videos, records, films, animations etc.

175. (1) A USB wireless network adapter is integrated circuit chips pre-installed inside a PC or notebook that enables a wireless or standard internet connection on the computer into which it is plugged. A wireless network adapter allows a computing device to join a wireless LAN. Wireless network adapters contain a built-in radio transmitter and receiver. Each adapter supports one or more of the 802.11a, 802.11b, or 802.11g Wi-Fi standards.
176. (4) Functional languages are based on the lambda calculus, which is a simple mode of computation and are a class of languages designed to reflect the way people think mathematically rather than the underlying machine.
177. (3) To mark the end of a paragraph, ENTER key is pressed. By default whenever ENTER key is pressed in WORD, end of paragraph is recorded even if it is not a paragraph. For ending lines or sentences, other periods such as full stop or semicolons are used.
178. (4) Various software offers free telephone calls anywhere in the world using internet as the transmission medium. This service is referred as *Internet telephony* using which voice, text, fax, SMS and/ or voice messages can be transported without any PSTN (public switched telephone network).
179. (3) While changing the size of a window, firstly point to any corner or border of the window. When a two headed arrow appears, using mouse drag the arrow heads to change the size of the window.
180. (2) People who are not able to use their hands for input can use Speech recognition software. These software the spoken words into text. Person's specific voice is analysed and its fine tune is used to recognize that person's speech.
181. (4) Downloading is the transmission of a file from one computer system to another, usually smaller computer system. From the Internet user's point-of-view, to download a file is to request it from another computer (or from a Web page on another computer) and to receive it.
182. (2) Internal memory is also known as main memory or primary storage. This memory is directly accessible by CPU. This is why whenever any data is being processed, it is stored on internal memory in uniform manner.
183. (4) Today computer process control is applied to many industrial operations. Each process computer monitors up to 2,000 parameters that are required to control the process, such as temperature, flow rate, pressure, liquid level, and chemical concentration. These measurements are taken on a sampling basis; the time between samples varies between 2 and 120 seconds, depending on the relative need for the data. Each computer controls approximately 400 feedback control loops.
184. (5) Typeface is a set of characters having common design feature. Typography or font setting technique that makes any language visible uses typeface. Typeface is actually an intrinsic style of a font.
185. (2) XBRL International Inc. has developed and published XBRL which aims at defining and exchanging financial information globally. This language is available on the internet and uses XML syntax and XML related technologies. It is mainly used to describe particular types of data models characterized by the use of directed graphs commonly for business reporting.
186. (1) Control Unit of computer contains *Arithmetic Logic Unit (ALU)*. This component of control unit performs all the mathematical operations such as addition, subtraction, division. It also performs all comparison operations in a system.
187. (4) DSL provides the internet access through a phone line by transmitting digital data. It offers faster access speeds than dial-up connection as it uses higher frequency bands for data. Depending on the DSL technology and line-connection, the data bit-rate may range from 256 kbits/ second to 40 kbits/ second.
188. (4) Drive imaging also known as disk cloning is a technique that captures all the contents of a drive in an "image file". Entire disk contents including the operating system, applications, files and data are first written to a mirror image of disk and then this image is written to the second disk.
189. (3) URL refers to *Uniform Resource Locator* is a unique address of a document in order to be accessible over the internet. To access a page or a document, the URL of the page is entered in the Address area in the internet browser.
190. (1) When a command is not accessible or applicable in the current context, it is deactivated. Navigation is not possible on to it. Such commands are unavailable in the current context so are dimmed or faded in the pull-down menu.
191. (3) With emergence of internet based applications, companies started licensing its applications to other companies and allowed hosting of their applications over the internet securely on centrally located servers. This application can then be licensed to multiple customers. These applications are sometimes customized and offered as hosted services by the licensed companies.

192. (2) Webmail interface is an interface that facilitates access of e-mails anywhere from the internet. One needs not to register with the service provider. Using any web browser, the email client can send or receive mail globally. mail2web, dracMail etc. are few examples of webmail service providers.

193. (2) Connections is a brilliant feature on LinkedIn. It is a kind of chain of mails. All the LinkedIn users specify their email addresses in LinkedIn so as to add to the collection of email addresses. As soon as this collection increases, existing users can send invitations to other people also.

194. (5) Multiplexing is a technique used in communications over networks when multiple calls are to be sent on a single line. In this technique, analog and digital data streams are combined into single signal. Multiplexing aims at sharing of expensive resources in a network.

195. (3) To search for file or folders, the Search Window in Windows XP provides a pane on the left that allows to specify the phrase to be searched and the locations i.e. files or folders which are to be searched. This left hand pane is called Search Companion.

196. (3) An email address is the address of email account form which emails can be sent or received. Email address is comprised of two parts- local and domain name. the local part may contain Uppercase and lowercase English letters, Digits 0 to 9, Character . (dot, period, full stop). But Space and "0,;,<>@[\] are restricted.

197. (3) An email address contains protocol identifier (such as http), the letters www (that refers to world wide web) and a registered domain name. Domain name refers to the identification of a specific website

with which the local email account name is registered. For example, in sam@yahoo.co.in yahho.co.in is the domain name on which "sam" registered email account name. even if we do not specify protocol identifier and www, we can search for a webpage/ website with its registered domain name. For example to search yahoo.com, without specifying http://www.yahoo.com we can search it with simply entering yahoo.com in address bar

198. (1) CAM or computer aided manufacturing is a technique where computer software are used to assist in all operations of manufacturing machinery, tools etc. More precise dimensions and material consistency can be achieved using CAM so as to fasten the production process and make the process more efficient and of high quality.

199. (1) Algorithm is a set of steps for solving a problem through a program. A logical error refers to a bug or mistake in the sequence of programming statements that causes unintended output of the program. Whenever algorithm is incorrect, it causes undesired results but does not terminate the program abnormally.

200. (4) An adapter is a device that converts the attributes of another device that is of different configuration so as to make it compatible.

209. (4) The word **Draw** (Verb) means : attract or interest.

Look at the sentence :

The course draws students from all over the country.

210. (2) The word **Clock** (Verb) means : achieve; to reach a particular amount.

211. (4) The word **Abate** (Verb) means : to become less strong;

to make something less strong; lessen.

Look at the sentence :

Steps are to be taken to abate pollution.

212. (2) The word **Emerging** (Adjective) means : new and still developing.

213. (3) The word **Myriad** (Adjective) means : an extremely large number of something; countless.

Its antonym should be **few**.

214. (3) The word **Tepid** (Adjective) means : slightly warm; lukewarm; not enthusiastic; moderate.

Its antonym should be **warm**.

215. (1) The word **Myth** (Noun) means : legend, fallacy; something that many believe but that is false; belief.

Its antonym should be **reality**.

226. (3) Here, electronically (Adverb) file tax returns for should be used.

227. (4) Here, levied additional monthly charges on consumers should be used.

228. (1) Here, Despite curfew..... should be used.

Remember :

Despite = in spite of.

229. (4) Here, has been doubled should be used.

230. (1) Here, Prisons/Prison should be used.

231. (2) Here, darkness amid a wave of should be used.

233. (4) Here, implemented in the letter and spirit should be used.

234. (3) Here, un-productive and donot..... should be used.

235. (1) Here, As far as..... should be used.

236. (2) Here, was running out should be used.

237. (3) Here, subject (war) is singular. Hence, rages on should be used.

238. (2) Here, the first to switch off (infinitive) should be used.