

## Short Answer Questions

**Q.1. Why should we avoid wastage of food?**

**Ans.** Enough food is not available for all of us. Food is very costly and poor people cannot afford to buy.

**Q.2. Where does honey come from? How is it produced?**

**Ans.** Honey comes from honeybees. Honeybees collect nectar from flowers, convert it into honey and store it in their hive.

**Q.3. Name two ingredients in our food that are not obtained from plants and animals. Mention one source for each ingredient.**

**Ans.**

- i. **Salt:** It is obtained from sea water or rocks.
- ii. **Water:** It is obtained from rivers, wells, taps, ponds, tube wells, rain. (Any one)

**Q.4. Write the ingredient source of each of the following:**

Urad dal, salt, water, spices, sugar

**Ans.**

Ingredient	Source
Urad dal	Plants
Salt	Sea
Water	Natural resources
Spices	Plants
Sugar	Plants

**Q.5. Give one word for each of the following:**

[NCERT

Exemplar]

(i). Honeybees suck from flower

**Ans.** Nectar

(ii). Animals which eat other animals.

**Ans.** Carnivores

(iii) Animals which eat only plants and plant products.

**Ans.** Herbivores

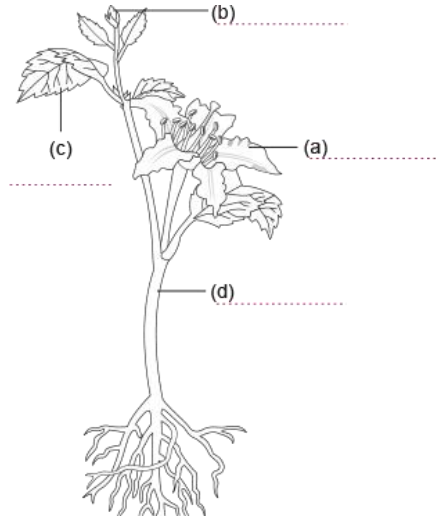
(iv) Animals which eat both plants and animals.

**Ans.** Omnivores

**Q.6. Why do organisms need food? Write two reasons.**

**Ans.** Food gives energy to do work/to grow/to repair damaged parts, to protect the body against diseases. (Any two)

**Q.7. Label and colour the different parts of the plant given below.**



**Ans.**

- a. Flower
- b. Bud
- c. Leaf
- d. Stem

**Q.8. Look at the food chain given below as seen in a field and answer the questions that follow.**

**Wheat → Rat → Snake → Eagle**

**(i)** The farmer of the wheat field uses pesticides and kills all the rats. How is that useful to the farmer?

**Ans.** Killing all the rats, the farmer saves his field from the pests and his production of wheat will increase.

**(ii)** What will happen if all the snakes in the field are removed?

**Ans.** If all the snakes are removed the population of rats in the field will increase and they will reduce the production of wheat by feeding on them.

**Q.9. How do herbivores differ from carnivores?**

**Ans.** Herbivores eat only plants or plant products. Their teeth are designed to chew plants and their stomachs to digest them. Carnivores eat other animals. They have sharp teeth to tear the flesh of animals.

**Q.10. Write two ways by which wastage of food can be prevented.**

**Ans.**

- i. Avoid cooking more amount of food than required.
- ii. Food should be stored properly in refrigerators.

**Q.11. Classify the following animals into herbivores, carnivores and omnivores:**

Rat, lion, tiger, spider, house lizard, cow, human beings, butterfly, crow

**Ans. Herbivore:** Cow, butterfly

**Carnivore:** Lion, tiger, spider, house lizard

**Omnivore:** Human beings, crow, rat