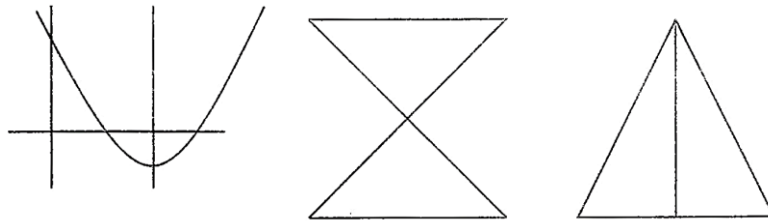


NOTES

SYMMETRY

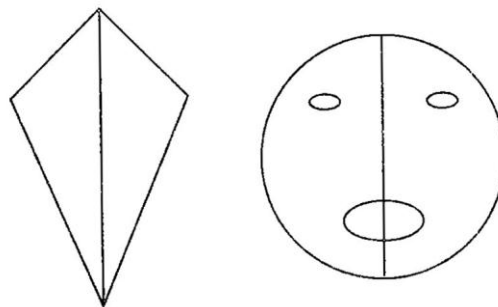
Symmetry is when something is made up of two parts that are exactly the same and they are facing each other.



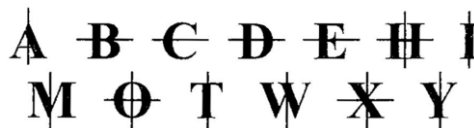
Line Symmetry

- A line of symmetry divides a figure into two mirror - image halves.
- The line of Symmetry is imaginary line where you could fold the image and have both halves match exactly.

Example:



- Letters and line symmetry

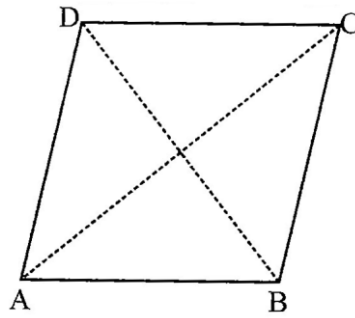


- There are some letters which do not have any line symmetry.

F G J K L N P Q S Z

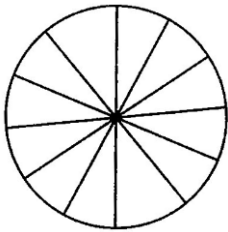
- **Rhombus:**

❖ Two lines of symmetry AC and BD



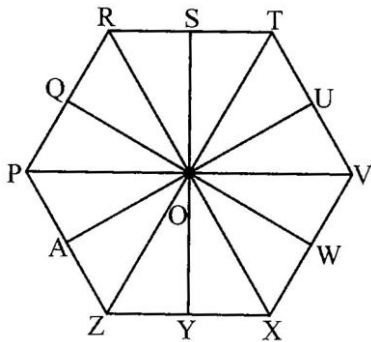
▪ **Circle:**

- ❖ Infinite lines of symmetry.



▪ **Regular Hexagon:**

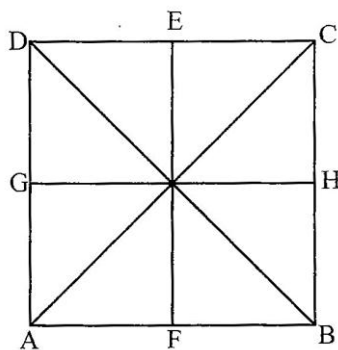
- ❖ Six lines of symmetry AU, ZT, YS, XR, WQ and VP.



Symmetry of some Standard Geometrical figure.

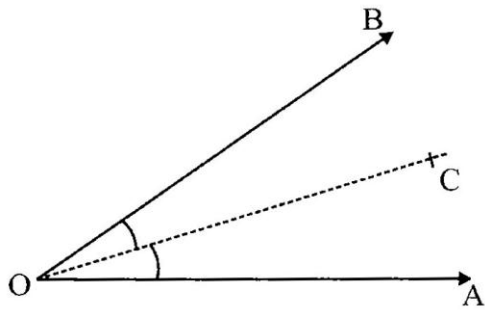
▪ **Square:**

- ❖ Four lines of symmetry AC, BD, GH, EF



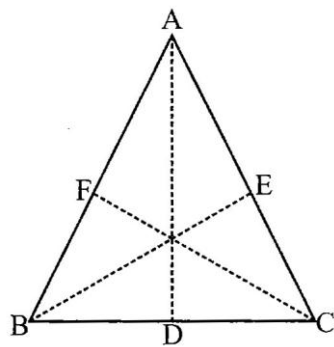
- **Angle:**

- ❖ One line of symmetry OC



- **Equilateral Triangle:**

- ❖ Three lines of symmetry AD, BE and FC.



- **Rectangle:**

- ❖ Two lines of symmetry PQ and RS

