

(MODEL TEST PAPER)
FINAL EXAMINATION 2012 – 13
SUBJECT : EVS
CLASS :IV

TIME : 2 HRS

M.M : 50M (48 + 2M for neatness)

Name : _____

Section : _____

Date : _____

Roll No: _____

Invigilators signature : _____

General Instructions :

- i) The question paper is in booklet form .
- ii) The questions should be answered in the space provided . The answers should not exceed the prescribed word limit or specified points .
- iii) Give examples wherever applicable.
- iv) The map should be marked accurately and neatly.
- v) Don't use sketch pens for highlighting the answers .
- vi) 2 marks are for presentation .

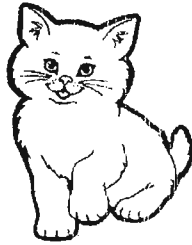
PART I

Ques 1 : Answer the following questions in detail-

(5 x 3 = 15M)

(a) Identify the following ^{category of animals} and write two differences between the following -

i)



ii)

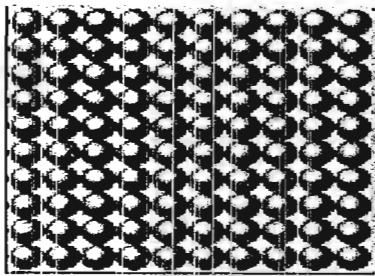
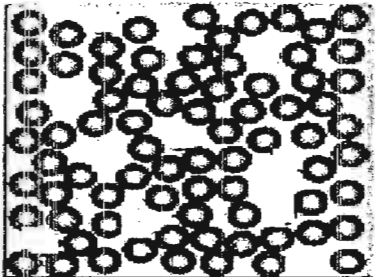
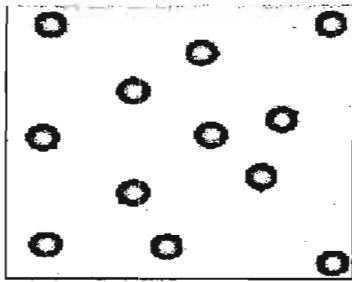


i)	ii)

(b) Write about the three uses of artificial satellites.

(c) Write about any three effects of force.

(d) Identify the following and write any two differences -

		
<hr/> <hr/> <hr/> <hr/> <hr/> <hr/> <hr/> <hr/>	<hr/> <hr/> <hr/> <hr/> <hr/> <hr/> <hr/> <hr/>	<hr/> <hr/> <hr/> <hr/> <hr/> <hr/> <hr/> <hr/>
<hr/> <hr/> <hr/> <hr/> <hr/> <hr/> <hr/> <hr/>	<hr/> <hr/> <hr/> <hr/> <hr/> <hr/> <hr/> <hr/>	<hr/> <hr/> <hr/> <hr/> <hr/> <hr/> <hr/> <hr/>

(e) Write any three ways in which weather affects our day-to-day life.

Ques 2: Answer the following:

(5 x 2 = 10 M)

(a) Identify the heavenly body -

It is a _____

An example _____

Definition: _____



(b) Write in detail about any one kind of force (give an example).

(c) Which two insects have four stages in their life cycle? Name the stages.

Name of insects _____ **and** _____

Stages _____

(d) When we burn a piece of paper it changes into _____

Type of change _____

Reason _____

(e) Why does sea breeze occur during the day? Explain in detail.

Ques 3 : Think and answer -

(5 x 1 = 5 M)

a) How are tadpoles different from frogs?

b) What type of change (physical or chemical) is seen in the water cycle? Give a reason for your answer.

c) What kind of energy is present in a hot body? How is it obtained?

d) Why is noon time the hottest time of the day?

e) Give a reason why Earth is a planet and not a star?

PART II

Ques 4 : Match the following –(write the alphabet)

(5 x ½ =2 ½ M)

- | | |
|--|----------------------|
| a) Egg of a frog | () Neptune |
| b) Coldest planet | () Gravity |
| c) Weather | () Volume |
| d) Force by which the earth pulls objects towards itself | () Hot, cold, humid |
| e) Amount of space that a liquid occupies | () Spawn |

Ques 5 : Circle the odd one out and give a reason for your answer - (5 x 1 = 5 M)

- i) Evaporation Condensation Precipitation Floods
-
-

- ii) Eraser Juice Bag Cup
-
-

- iii) Wind Atom Water Gravity
-
-

- iv) Uranus Mercury Mars Venus
-
-

v) Whales

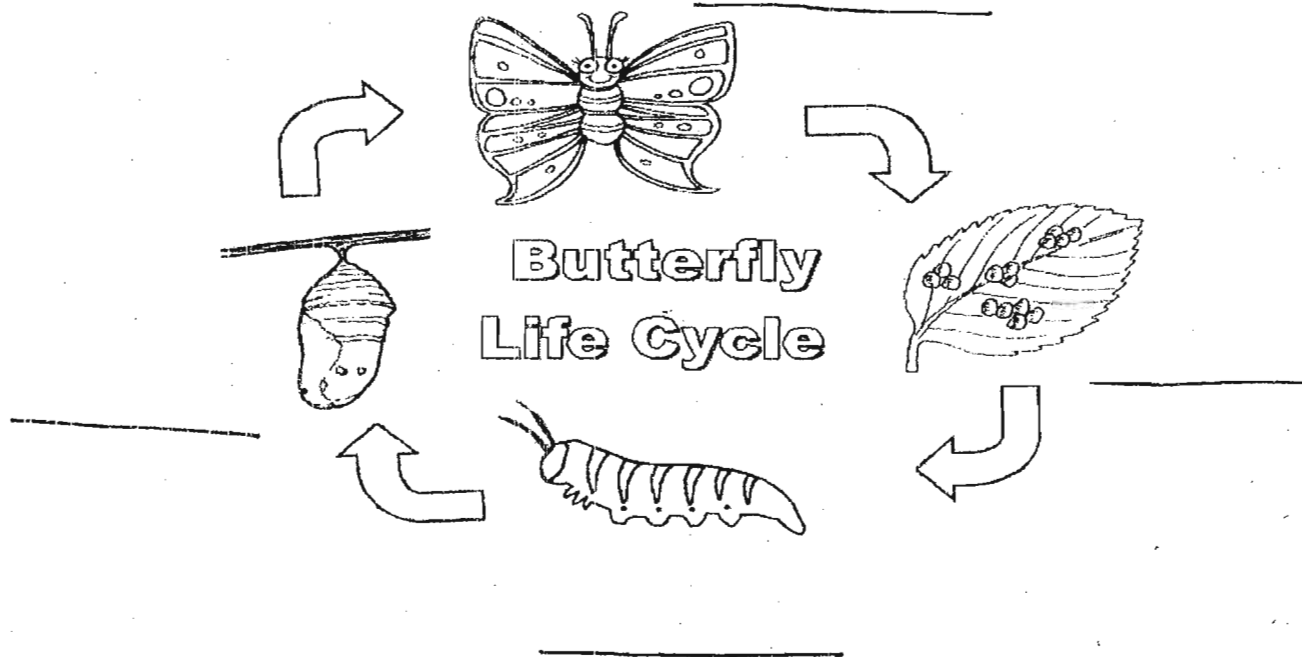
Shark

Dogs

Bats

Ques 6: i) Label the following -

(2 M)



ii) Draw and label any object which uses

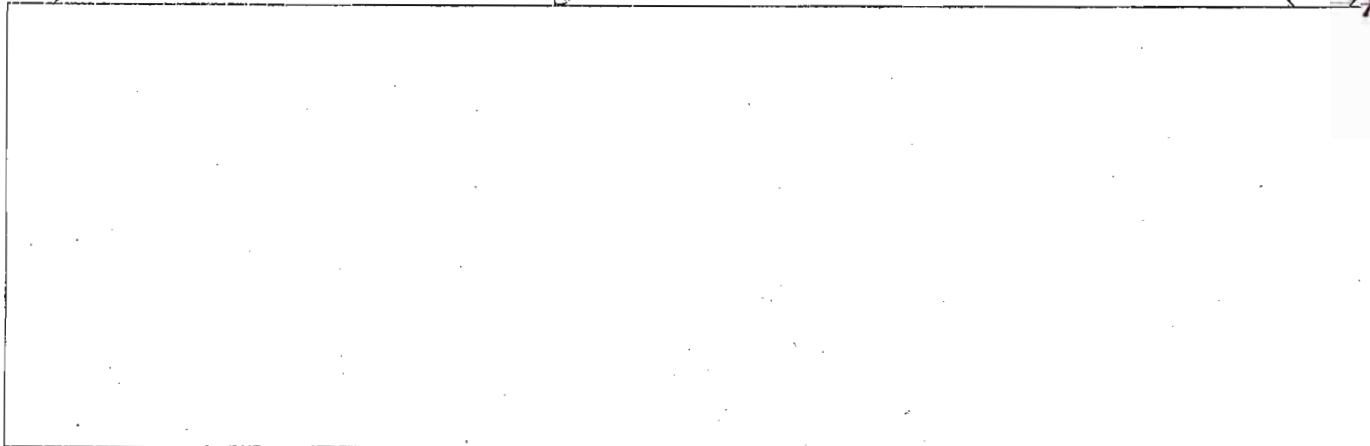
(2M)

- Wind energy
- Electrical energy

--	--

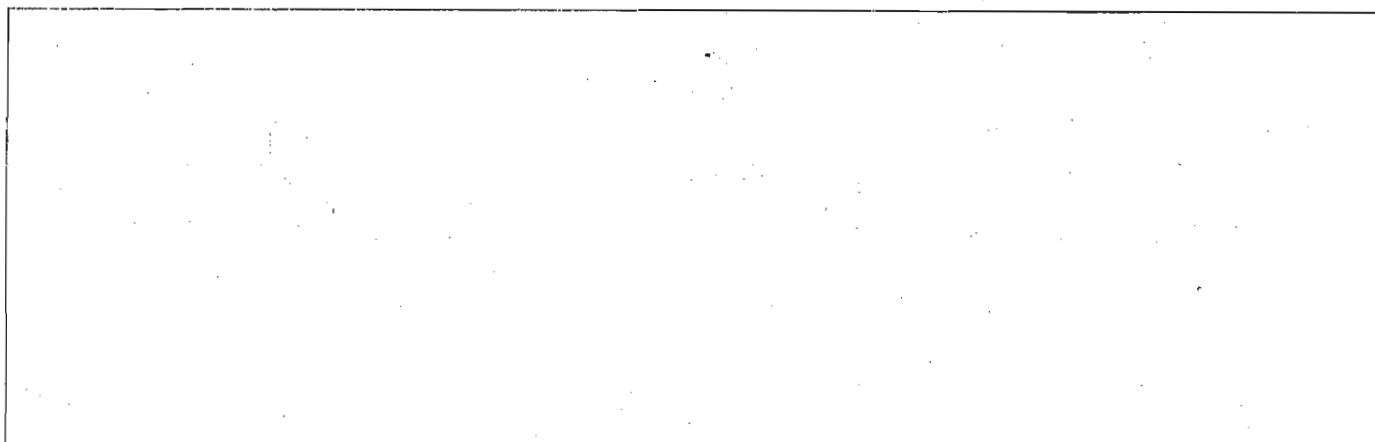
iii) Show with a well labelled diagram how sun causes wind.

(3M)



iv) A Constellation

(1M)



Ques 7) Fill in the blanks

(5 x $\frac{1}{2}$ = 2 $\frac{1}{2}$ M)

- i) Water vapour rises up, _____ and condenses to form clouds.
- ii) The main source of energy on the earth is _____.
- iii) Volume of the solution is the _____ as the volume of the solvent.
- iv) Shedding of old skin is called _____.
- v) _____ is known as the morning star.