

# To Assemble The Components Of a Given Electrical Circuit

## Aim

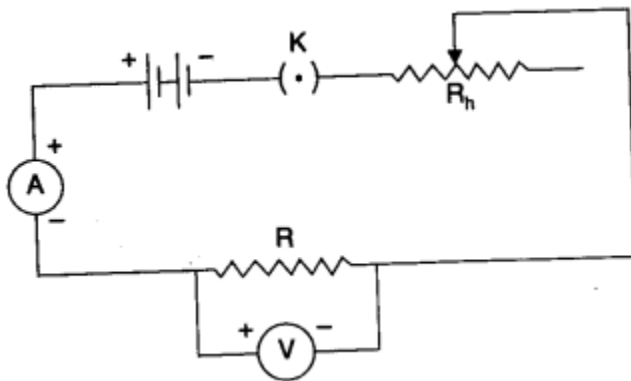
To assemble the components of a given electrical circuit.

## Apparatus and material

**Apparatus:** A voltmeter and an ammeter of appropriate range, a battery, a rheostat, one way key.

**Material:** An unknown resistance or resistance coil, connecting wires, a piece of sand paper.

## Diagram



## Procedure

1. Connect the components (Resistors, inductors etc.) in series with each other as shown in diagram and then in series with the battery.
2. Connect the ammeter in series with the circuit, to measure the current.
3. Connect the voltmeter in parallel to the resistor, to measure the potential difference.
4. Connect the switch in series with the battery.
5. Assembly of the electrical components in electric circuit is complete.

## Utility

It is used for measuring an unknown resistance (see Experiment 2: Section A).