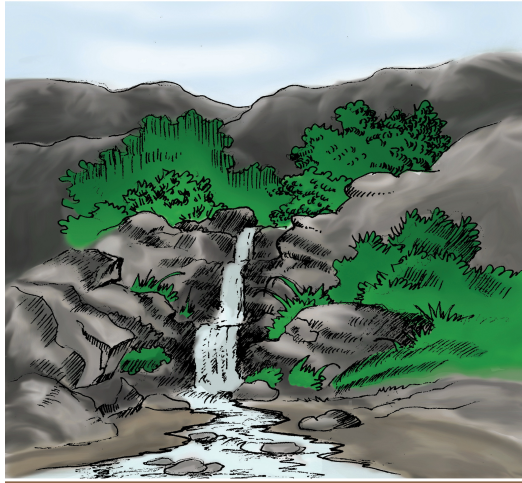


Kumtluang

BU NGANA



Pawl-V Mizo

KHUALZIN LEH SAVAWM

Khaw kâr kawng reh tak maiah hian khualzin pahnih hi an kal dîn a. An chhuah hma aţangin hlauhawm eng pawh lo thleng se, intlansan lova inpui tawn zêl turin an intiam bawk a.

Thui pawh an la kal hma chuan hnim buk kâr aţang hian savawm a lo chhuak a, khualzin pahnihte chu a rawn pan ta ngut ngut mai a. Khualzin pakhat zâwk chu rang takin thingah a lâwn vat a. Pakhat zâwk erawh chuan tlanchhiatna hun a nei tawh lo tih a inhria a, leiah a tlu tawp a, a thi der ta ngawt mai a.



Thâwk pawh thaw ngam lova kawng laia a mu reng chu savawm chuan a zuk hnim a, a beng bulah te chuan a hmuin a zuk nûl thuak thuak a. Chutah a rûm dut a, a thi tawh niah a ngai a, savawm hian mitthi tawh hnu an khawih ngai loh avangin engtin mah ti lovin a kalsan leh ta mai a.

Savawm chu hmuh phâk lohva a kal bo hnu fêah thing kunga lâwn zâwk chu a lo chhuk a, zak ru tak chungin a t̄hianpa chu a va pan a, a t̄hianpa chu lung chungah hian a lo t̄hu tawh a.

Thingah lâwn zâwk chuan, “Kan va han chesual nasa teuh ve le. Kha, savawm khan i beng te kha a rawn hnim thuak thuak a, a hrilh ru che ni tlatin ka hre lehngal a, eng thu chiah nge maw a hrilh che le?” tiin a

thianpa chu a zawt ta a.

Ani chuan a thianpa chu a en ang kel kaw l a, “Eng thu dang sawi hran lo ve, ni dangah chuan nang anga thian dawihzep hi kawp tawh lo turin min rawn a ni,” a ti ta a.

Thu pawimawhte:

khualzin	intlansan	inthurual
intiam	hmachhawn	tlanchhiatna
dawihzep	nûl	kel kaw l

TIH TURTE

1. Heng zawhnate hi chhâng rawh.

(a) Khualzin pahnihte khan an zin chhuah hma khan eng nge an intiam?

(aw) Khualzinte kha savawm an tawh khan engtin nge an awm?

(b) Khualzin thi der zawk hnenah khan savawm khan thu a sawi tak takin i ring em?

2. Heng thu hmang hian a awlte hi dah khat rawh.

lung, dawihzep, thingah, mitthi

(a) Savawm an hmuh khan thian pakhat zâwk kha _____ a lawn.

(aw) Savawm hian _____ tawh hnu a khawih ngai lo.

(b) “Thian _____ kawp tawh lo turin min rawn a ni.”

(ch) A thianpa chu _____ chungah hian a lo thu a.

3. A thu epte zia k la, chung a thu epte hmang tel zel chuan thu phuah rawh.

dawihzep _____

hla _____

nung _____

lawn _____

ding _____

4. Heng thumal pangngai leh a modified form thute hmang hian sentence siam ve ve rawh.

thleng _____

thlen _____

chhuak _____

chhuah _____

tlanchhia _____

tlanchhiat _____

5. A hnuaiia thute hi hawrawppui hman dan tur dik taka hmangin ziaak rawh.

Lala chuan a thianpa hnenah, “kum eng zat nge i nih?” a ti a. thanga chuan, “pawl eng zat nge i zir?” a ti ve thung a. lawma chuan, “pi zari te, pu siama te, parmawii te, tlansangi te, rokhumi te an lo kal ve asin,” a ti chul a.

6. Bawm chhunga thu hmang hian sentence han siam teh.

kawng reh eng pawh lo thleng se va hnim pan ngat ngat

teuh kher mai tlu tawp

7. Heng thute hi a milpui ziaak rawh.

kawng khualzin inthurual lamlian

let tawp lungrual zin mi tlu teuh

8. Project

In thiante zingah inkawmngaih deuh an awm em zawng chhuak la, a hrang ve vein a thian nena an inkawm tan dan te, thil an tih dun thin te leh a thian a ngainat chhan te

Thian pakhatna	Thian pahnihna
An inkawm tan dan	
Thil an tih dun thinte	
An inngainat chhan	

Table of Contents

ZIRLAI 3

KHUALZIN LEH SAVAWM

3. A thu epte ziak la, chung a thu epte hmang tel zel chuan thu phuah rawh.
4. Heng thumal pangngai leh a modified form thute hmang hian sentence siam ve ve rawh.
5. A hnuaja thute hi hawrawppui hman dan tur dik taka hmangin ziak rawh.
6. Bawm chhunga thu hmang hian sentence han siam teh.
7. Heng thute hi a milpui ziak rawh.
8. Project