

## UNIT-5

# 31

# TIME

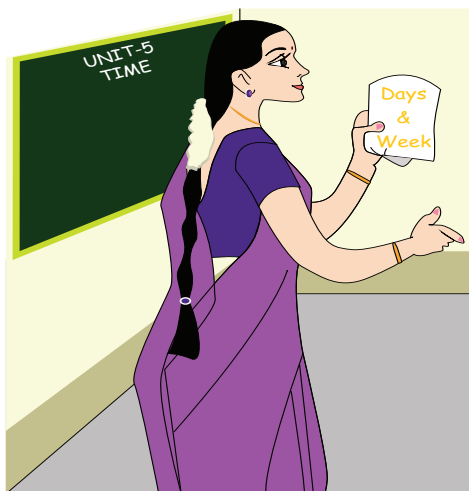
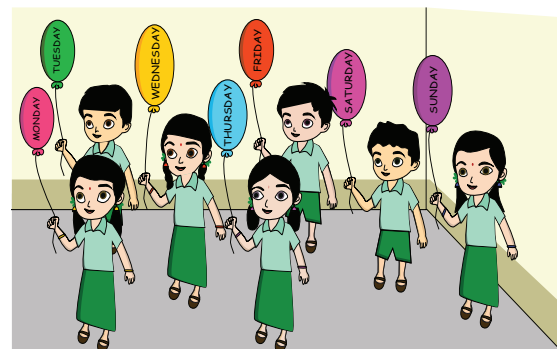


### 5.1 Understand days and weeks

#### Recall

Teacher writes the days of a week in the Balloons and ask students to hold the Balloons. Also ask the students to stand in order and join their hands. Now let us sing the following song.

"Sun sun Sunday, let's have fun  
Ma ma Monday, morning is so cool,  
Tue tue Tuesday, tickle your friend,  
Wae wae Wednesday, jump up high  
Tha tha Thursday, reach the sky



Fa fa Friday, eat healthy to be strong.  
Sa sa Saturday, all sit down.  
Let's get up, it's a new day  
The earth goes round  
Round and round  
Around the sun  
That is why all new days"

## Exercise 5.1

### A. Answer the following questions.

- 1 Which is the first day of the week ?
- 2 How many days do you come to school in a week? Name them?
- 3 How many days are holidays in a week? Name them?
- 4 Which is the third day of the week?

### B. Unscramble the days given below and write the days of the week in order.

- 1 TRUSDAHAY
- 2 DYARFI
- 3 DSANUY
- 4 NODMYA
- 5 SDEUYAT
- 6 NDWADSEYE
- 7 YDASTAUR



### Activity

1. Shuffle the cards with the names of months and ask the children to arrange them in order.
2. Mark the ground with the names of days of a week. Students should run in a circle. When the teacher says 'FRIDAY', every student must go and stand in the space provided for Friday.

### Let us do

Find the days



## 5.2 Marking the dates

2019 APRIL						
Sun	Mon	Tue	Wed	Thu	Fri	Sat
	1	2	3	4	5	6
7	8	9	10	11	12	13
14	15	16	17	18	19	20
21	22	23	24	25	26	27
28	29	30				

Answer the following questions using the calendar given above.



- Today's date is
- What will be the day after tomorrow?
- What was day before yesterday?
- What will be the date of next Friday?
- How many days are there in this month?
- Month of March ends in  day.
- what will be the day?
  - 4 days after 11<sup>th</sup> April -
  - 7 days before 19<sup>th</sup> April -



### Activity

### Birthday Calendar

Write the birthday of all your family members in the given table.

Name	Day	Month	Year

Answer the following from the above table

- Who is the oldest member of your family?
- Who is the youngest?
- What is the difference in their age?
- When will you celebrate your 12<sup>th</sup> birthday?

### 5.3 Compute the number of weeks in a year.

2019						
January						
Su	M	Tu	W	Th	F	Sa
		1	2	3	4	5
6	7	8	9	10	11	12
13	14	15	16	17	18	19
20	21	22	23	24	25	26
27	28	29	30	31		
February						
Su	M	Tu	W	Th	F	Sa
					1	2
3	4	5	6	7	8	9
10	11	12	13	14	15	16
17	18	19	20	21	22	23
24	25	26	27	28		
March						
Su	M	Tu	W	Th	F	Sa
					1	2
3	4	5	6	7	8	9
10	11	12	13	14	15	16
17	18	19	20	21	22	23
24	25	26	27	28	29	30
31						
April						
Su	M	Tu	W	Th	F	Sa
	1	2	3	4	5	6
7	8	9	10	11	12	13
14	15	16	17	18	19	20
21	22	23	24	25	26	27
28	29	30				
May						
Su	M	Tu	W	Th	F	Sa
		1	2	3	4	
5	6	7	8	9	10	11
12	13	14	15	16	17	18
19	20	21	22	23	24	25
26	27	28	29	30	31	
June						
Su	M	Tu	W	Th	F	Sa
						1
2	3	4	5	6	7	8
9	10	11	12	13	14	15
16	17	18	19	20	21	22
23	24	25	26	27	28	29
30						
July						
Su	M	Tu	W	Th	F	Sa
	1	2	3	4	5	6
7	8	9	10	11	12	13
14	15	16	17	18	19	20
21	22	23	24	25	26	27
28	29	30	31			
August						
Su	M	Tu	W	Th	F	Sa
				1	2	3
4	5	6	7	8	9	10
11	12	13	14	15	16	17
18	19	20	21	22	23	24
25	26	27	28	29	30	31
September						
Su	M	Tu	W	Th	F	Sa
1	2	3	4	5	6	7
8	9	10	11	12	13	14
15	16	17	18	19	20	21
22	23	24	25	26	27	28
29	30					
October						
Su	M	Tu	W	Th	F	Sa
		1	2	3	4	5
6	7	8	9	10	11	12
13	14	15	16	17	18	19
20	21	22	23	24	25	26
27	28	29	30	31		
November						
Su	M	Tu	W	Th	F	Sa
					1	2
3	4	5	6	7	8	9
10	11	12	13	14	15	16
17	18	19	20	21	22	23
24	25	26	27	28	29	30
December						
Su	M	Tu	W	Th	F	Sa
1	2	3	4	5	6	7
8	9	10	11	12	13	14
15	16	17	18	19	20	21
22	23	24	25	26	27	28
29	30	31				

The calendar shows days of a week and month of a year. We can find the date of a particular day and a particular month from it.



#### Activity 1

Look at the current year calendar and fill the table

Festival	Month	Date	Day
Pongal			
Independence day			
Republic day			

1. Which festival comes sooner from today?
2. How many days are more from today to celebrate that festival?
3. Which festival comes last?
4. How many months are there in between first and last festival of the year?



**Activity 2** Let us find how many weeks are there in a year.

**Fill the Boxes using the Calender 2019.**

Sl No	Name of the month	Numbers of days in the month	Numbers of weeks and days
1	January	31	4 weeks 3 days
2	February	28	4 weeks 0 days
3	March	31	4 weeks 3 days
4	April	30	4 weeks 2 days
5	May	31	4 weeks 3 days
6	June	30	4 weeks 2 days
7	July	31	4 weeks 3 days
8	August	31	4 weeks 3 days
9	September	30	4 weeks 2 days
10	October	31	4 weeks 3 days
11	November	30	4 weeks 2 days
12	December	31	4 weeks 3 days
	<b>Total</b>	<b>365</b>	<b>52 weeks 1 day</b>

### EXAMPLE

$$\begin{array}{r}
 52 \\
 7 \overline{) 365} \\
 \underline{-35} \phantom{0} \\
 15 \phantom{0} \\
 \underline{-14} \phantom{0} \\
 1
 \end{array}$$

1 week = 7 days  
 1 year = 365 days  
 1 year = 12 months  
 1 year = 52 weeks

**Answer:** 52 weeks in a year.

## Let us Know

Leap year occurs once in 4 years.

There are 366 days in a Leap year.

There are 52 weeks and two days in a Leap year.



### Activity

Calculate the total number of term holidays.

Occasion	Dates		Number of days
	From	to	
Holidays in term 1			
Holidays in term 2			
Holidays in term 3			

## 5.4 Relation between the number of days in a year and the number of days in each month.



### Activity

In a leap year February has 29 days, Why?



Complete the table.

Months with 31 days	Months with 30 days



### Try This

Find the months which have 30 days.

## Exercise 5.2

### A. State True / False

- 1 January is the first month of the year.
- 2 March is in between September and November.
- 3 The last month of the year is July.
- 4 February has 30 days.
- 5 April is the successive month of may.

### B. Write the missing month

- 1 June, \_\_\_\_\_, August, September.
- 2 March, April, \_\_\_\_\_, \_\_\_\_\_.
- 3 \_\_\_\_\_, October, November.

### 5.5. Reading time in a clock to the nearest hours and minutes.

Barathidasan was born on 2<sup>nd</sup> May 2018. Can you tell the following questions children?

Teacher: How old is Barathidasan?

Student: \_\_\_\_\_

Teacher: How many months old is he?

Student: \_\_\_\_\_

Teacher: How many weeks old is he?

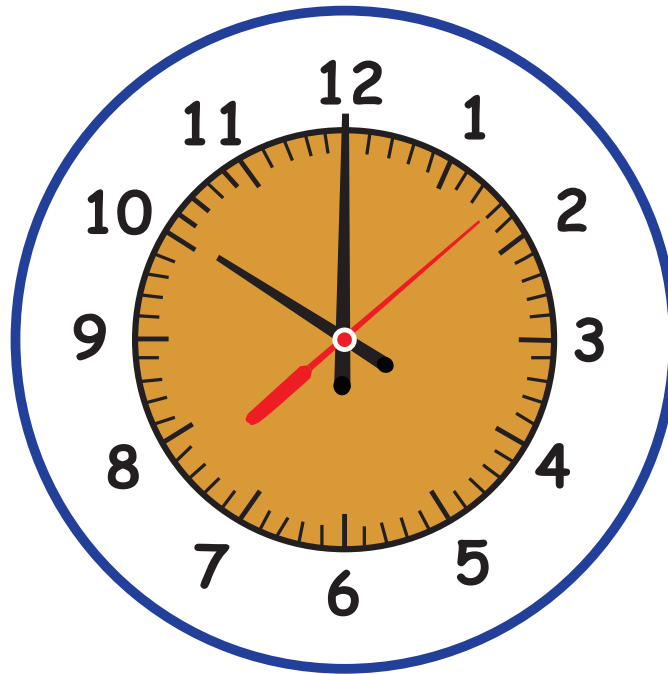
Student: \_\_\_\_\_

Teacher: How many hours old is he?

Student: \_\_\_\_\_



## Time



Look at the clock. It has the numbers from 1 to 12 on its face it has three hands.

The shorter hands is **Hour hand**.  
The longer hand is **Minute's hand**.  
Red color hand is **Second's hand**.

Which hand  
moves faster?

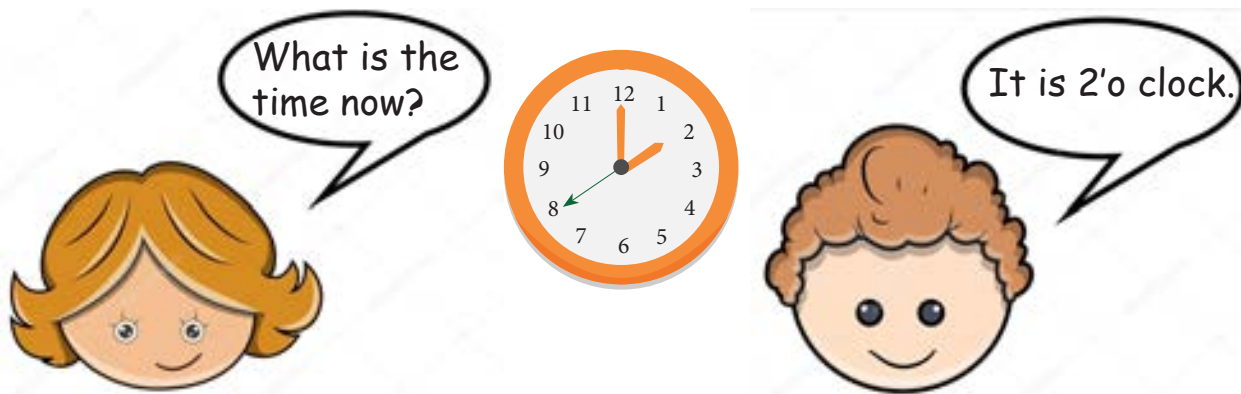


### Activity

Students are given a blank clock and recording sheet. They draw hands on their clock (hour and minute) and leave it on their desk. Music begins and the students dance around, moving from desk to desk. When the music stops, students record whose desk they stopped at and the time on their clock.

**(Teacher's note:** The teachers can make clock sheets without hands as per the number of students in the class).





### Activity

How many minutes will you take to do these activities in your home.

1. Boiling 1 litre water
2. Filling a Tub
3. Cleaning your bed room

### Let us Know



Quarter past 12

12:15



Half past 12

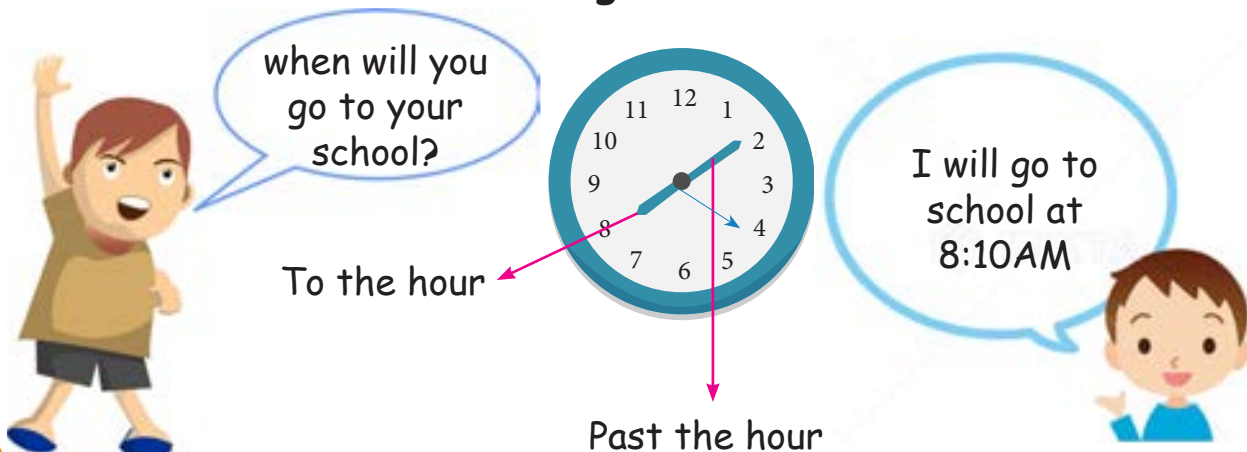
12:30



Quarter to 1

12:45

### Reading the minutes



### Exercise 5.3

#### A. Answer the following.

1. When will you start from home to school?
2. When will you reach your school?
3. How much time will it take for you to reach the school?
4. When will you reach the school if you delay by 10 minutes?
5. When would you reach the school if you start early by 5 minutes?
6. Ravi reaches school by 8:30 am and Prabu reaches school after 30 minutes, Find the time when prabu reach the school?

#### B. How long will it take the hour hand to move from the positions given in the clocks.

From		To		
From		To		
From		To		



Try This

Draw a clock which shows the time of your birth.