

SET - M

MODEL TEST PAPER 2012-2013

EVS

TIME : 2 Hrs

CLASS – IV

M.M : 50

Name _____

Section _____

Roll No. _____

Date _____

Invigilator's signature _____

Marks obtained _____

General instructions:

- i) The question paper is in booklet form.
- ii) The questions should be answered in the space provided. The answer should not exceed the prescribed word limit or specified points.
- iii) Give examples wherever applicable.
- iv) Don't use sketch pens for highlighting the answers.
- v) 2 marks are for neatness and presentation.

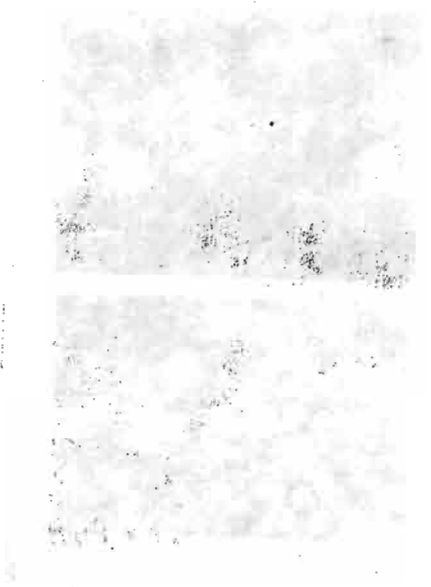
PART I

Q1. Answer the following questions in details: (4X3=12M)


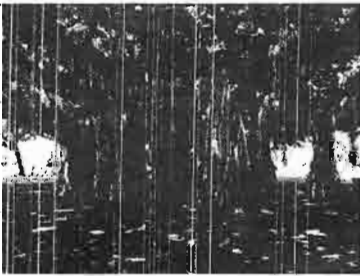
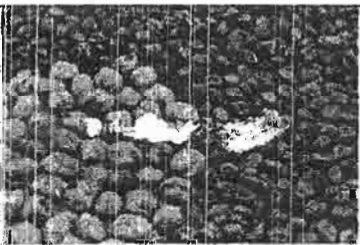
- a) Write any two differences between saline and fresh water. Give examples for both the sources .**

- b) Define a symbol and a key in reference to a map. Give suitable examples.**

c) Explain the process of tooth decay with the help of a flowchart:



d) See the pictures and identify the parts of plant and write their functions as seen in the picture here.

	Name the part of plant	Function
		
		
		

Q2. Answer briefly:

(6X2 = 12M)

a. Define a map. Mention any ^{one} use of it.

b. Complete the table .

FLOWER	USES
1. Saffron	
2. Marigold	
3. Broccoli	
4. Jasmine	

c. Complete the information on Chipko movement:

Felling of trees in the Garhwal –Himalayan region

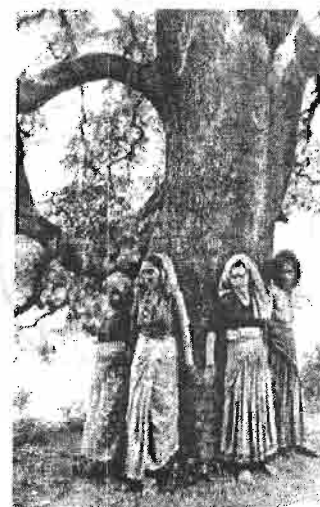
caused major _____ and floods. In

_____, groups of woman from the Chamoli district

in Uttarakhand boldly surrounded the trees to prevent the

loggers from cutting them down. This movement was led by

_____ and _____.







d. Name the following:

TREES FOUND IN HILLY AREA	TREES GROWN ON ROADSIDE
1.	1.
2.	2.

e. Define fog.

f. Identify the types of teeth drawn below and also write their other names

<p>1)</p> 	<p>2)</p> 
<p>3)</p> 	<p>4)</p> 

1) _____

2) _____

3) _____

4) _____

Q3. Think and answer:

(5 x 1 = 5 M)

i) Why is river water not fit for drinking?

ii) Why do doctors advice the fitting of braces for some people?

iii) We cannot survive without tree. Give reason.

iv) Why are scales important for drawing a map?

v) Why are flowers coloured and have fragrance?

PART II

Q1. Correct the underlined words in the sentences given below and rewrite

the sentences .

(1X 5=5M)

a. A compass is a place or a thing that you can easily recognize.

b. The Red Fort in Delhi is shaped like a lotus flower.

c. Tribal people eat fruits of plants like amla, teak, figs.

d. At the age of six humans have 32 permanent tooth.

e. Water from a tubewell is used mainly for drinking and evaporation.

Q2. Match the following columns:

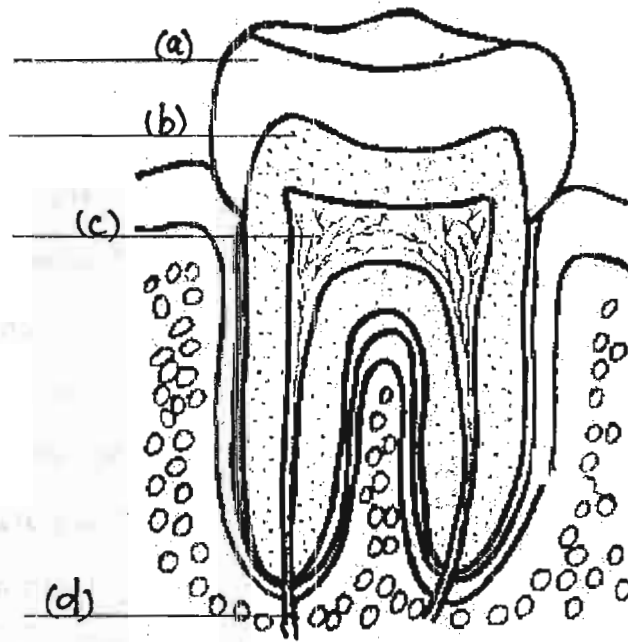
(1X5=5M)

	COLUMN 1		COLUMN 2
1.	Water changing into water vapour		Pansy
2.	Water vapour changing into water		Carnation
3.	Fibrous root		Gums
4.	Tap root		Condensation
5.	Centre of tooth		Temple
6.	Soft pink tissue		Millets
7.	Winter		Evaporation
8.	Spring		Rough map
9.	Sketch		Pea plant
10.	Landmark		Pulp

Q3. Draw a neat labelled diagram showing various parts of a leaf. (2M)

Q4. Label the internal structure of a tooth:

(2M)



Q5. Identify the symbols given below:

(2M)

a)

b)

c)

d)

Q6. Multiple choice questions:

(6X ½ =3M)

Tick the correct option.

1. Highlands on maps are represented by _____ colour.

- a. Green**
- b. Brown**
- c. Orange**
- d. Yellow**

2. The part where a leaf is attached to the branch is called _____

- a. Leaf base**
- b. Leaf stalk**
- c. Petiole**
- d. Pedicel**

3. These plants have fibrous roots-

- a. Bamboo and neem**
- b. Neem and maize**
- c. Rose and pea plant**
- d. Maize and millets**

4. The tongue is _____

- a. Is a sense organ
- b. Is made of taste buds
- c. Is made of muscles
- d. Both a and c

5. Around _____ percent of our body is made up of water.

- a. 60
- b. 70
- c. 80
- d. 90

6. When water vapour condenses on cold objects like grass, _____ is formed.

- a. Fog
- b. Mist
- c. Water
- d. Dew