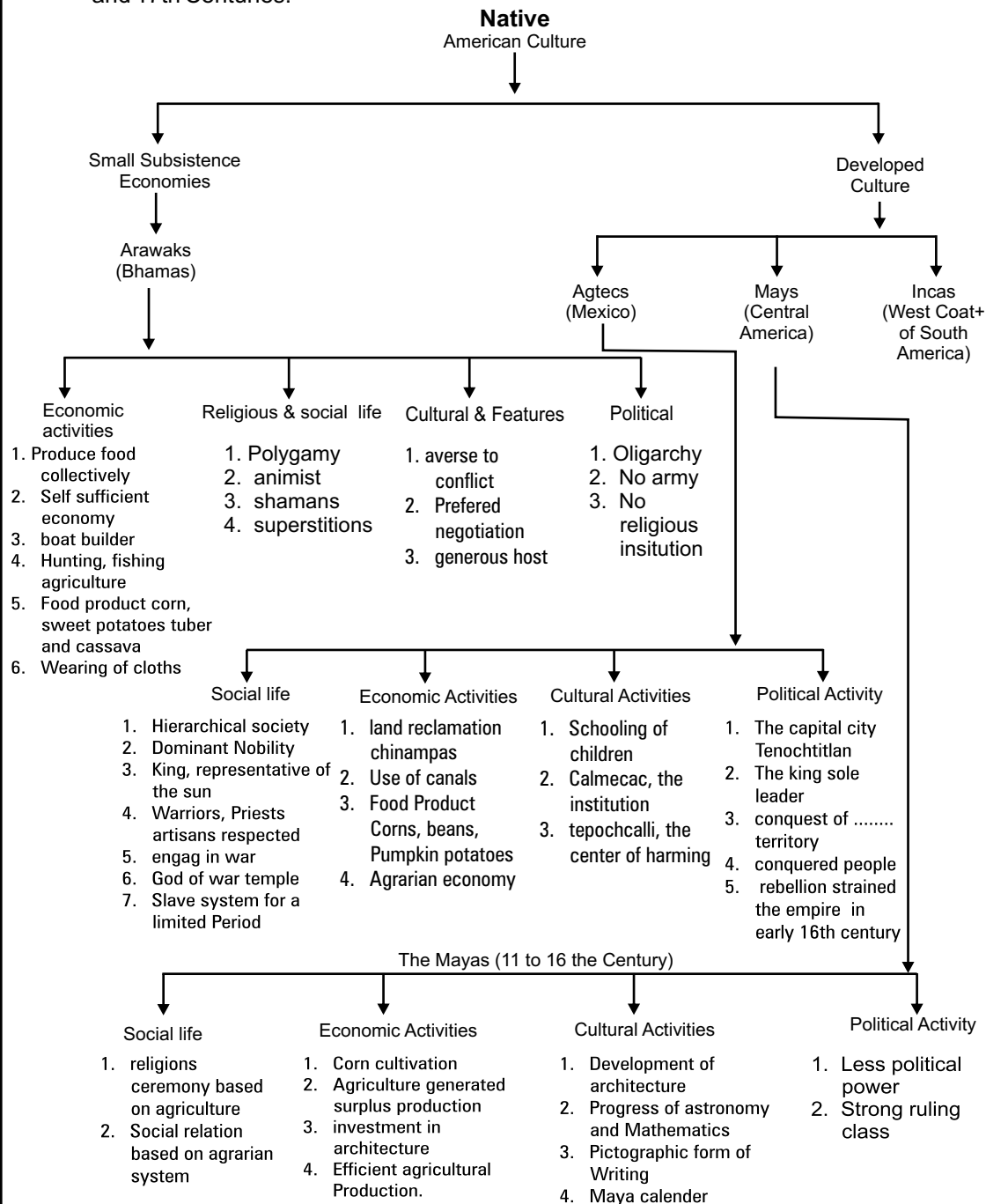
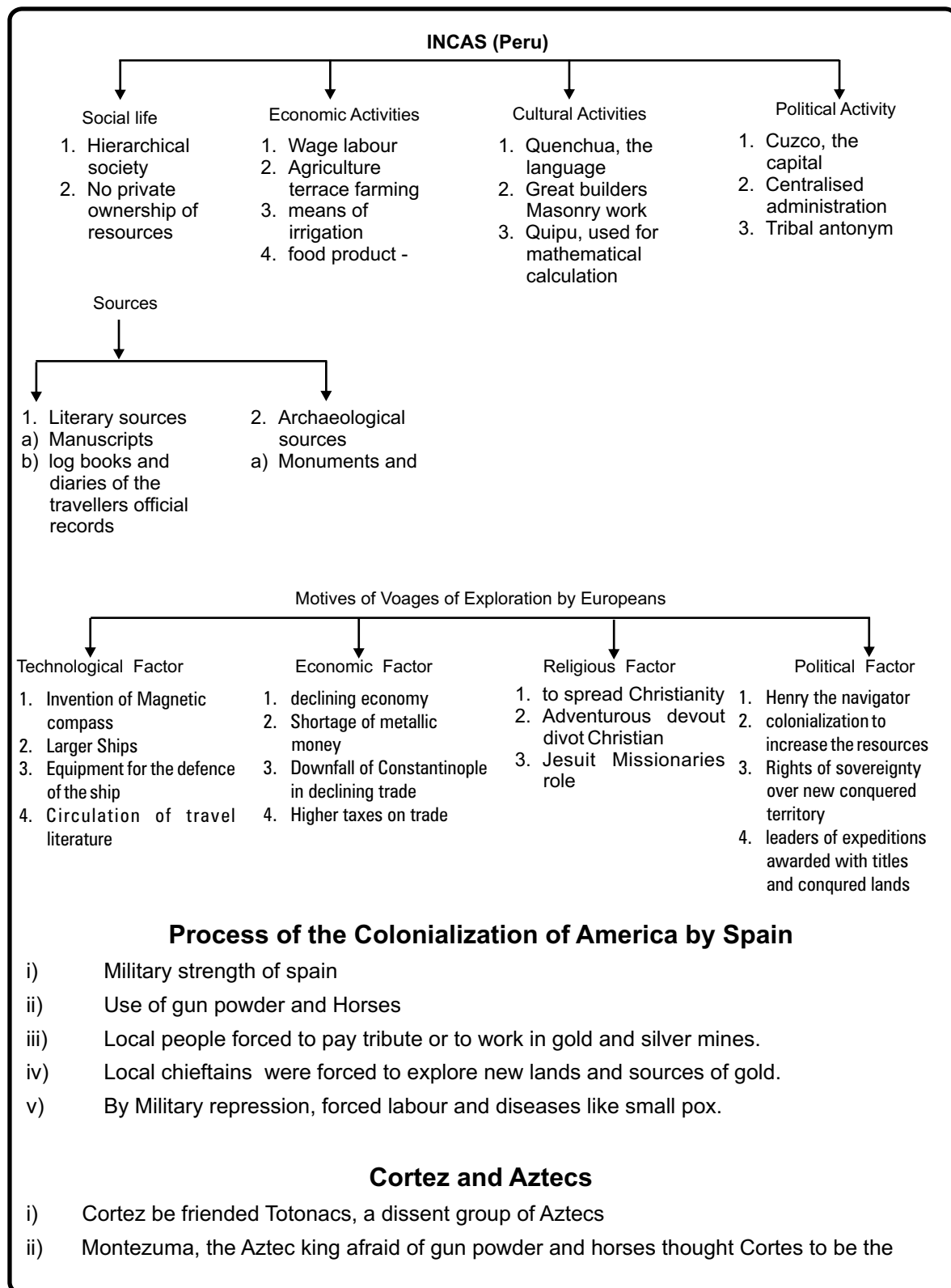


Theme - 8

Confrontation of Cultures

It reflects the encounters between European and the people of the America between 15th and 17th Centuries.





incarnation of exile god to take the revenge.

- iii) Tenochtitlan, the capital subdued on 8 Nov. 1519
- iv) Cortes installed christian images in the temple
- v) Incessant demands for gold by spanish provoked uprising.
- vi) Mysterious death of Montezuma, led to suspicion and deadly small pox, Elected king cuatemoc chose to give up his life.
- vii) Cortes became Captain General of new spain in Mexico.

Cabral and Brazil

- i) Brazil was discovered by Cabral in 1500
- ii) The king of Portugal divided the coast of Brazil in 14 hereditary captaincies.
- iii) Portuguse were given the right to land ownership and right to enslave local people
- iv) Production of sugar and sugarcane plantation with the use of slave labour.
- v) Jesuits work led to acceptance of Christianity and strong denial of slavery.

Model Questions with Answer

2 Mark Questions :

- Q. Why South America is also called 'Latin America' ? [2]
- i) Spanish and Portuguese language are the main language of the continent.
 - ii) These languages are part of the Latin family of Languages.
 - iii) The inhabitants are mostly native European and African by origin.
 - iv) People are catholics and its culture has many elements of native traditions mixed with European ones. (Write any two points)

Five mark questions :

- Q. What were the efforts made to abolish slavery in South America ?
- i) It accompanied emerging capitalist system of production.
 - ii) Exploitation was essential to economic gain
 - iii) Philip II of spain banned forced labour in 1601
 - iv) Law of 1609 abolished slavery, but settlers compelled king to withdraw the law.
 - v) Now African slaves were imported.
 - vi) Slavery existed in Africa prior to the entry of the Europeans.
 - vii) Even Africans helped in the capture of slave in lieu of crops imported from South America.
 - viii) reassessment of the suffering experienced by African slaves is still going on (Write any five points)

Ten marks questions :

- Q. What had begun as uncertain voyages came to have lasting consequences for Europe, the Americas and Africa ? Explain .
- i) In 15th Century maritime projects produced knowledge of Sea routes.
 - ii) Influx of gold and silver

- iii) Expansion of international trade and industrialization.
- iv) Spain and Portugal did not capitalize the profit.
- v) England and France took advances of 'discoveries'.
- vi) Huge in come invested in trade or building up a merchant navy.
- vii) Formed joint stock companies, sent trading expedition established colonies.
- viii) Introduced Europeans with the product of the new world like - tobacco, potatoes, cane sugar Cacao rubber and chillies to other countries.
- ix) Physical decimation of local population
- x) Destruction of native's livelihood and there enslavement in mines, plantation and mills.

Two marks question :

- i) What are Chinampas?
- ii) What do you mean by Tepochalli ?
- iii) What is calmecac ?
- iv) What do you understand by Quipu ?
- v) Who was Christopher Columbus ? How did he become famous ?

Five mark question :

- i) What are the special feature of Maya culture ?
- ii) What are the special features of the Aztecs ?
- iii) What are the similarities between the Aztecs and the Incas ?
- iv) How did Spain establish an Empire in America ?
- v) How did Pizarro capture the Incas of Peru ?

Ten Marks Question :

- i) Who was Cortes ? How did he Colonialise the Aztecs ?
- ii) What was the process through which Cabral led to colonization of Brazil ?
- iii) How did the 'discovery' of South America lead to the development of European colonialism ?
- iv) What were the factors for Spain and Portugal being the first in the 15th Century to venture across the Atlantic ?

Passage based question

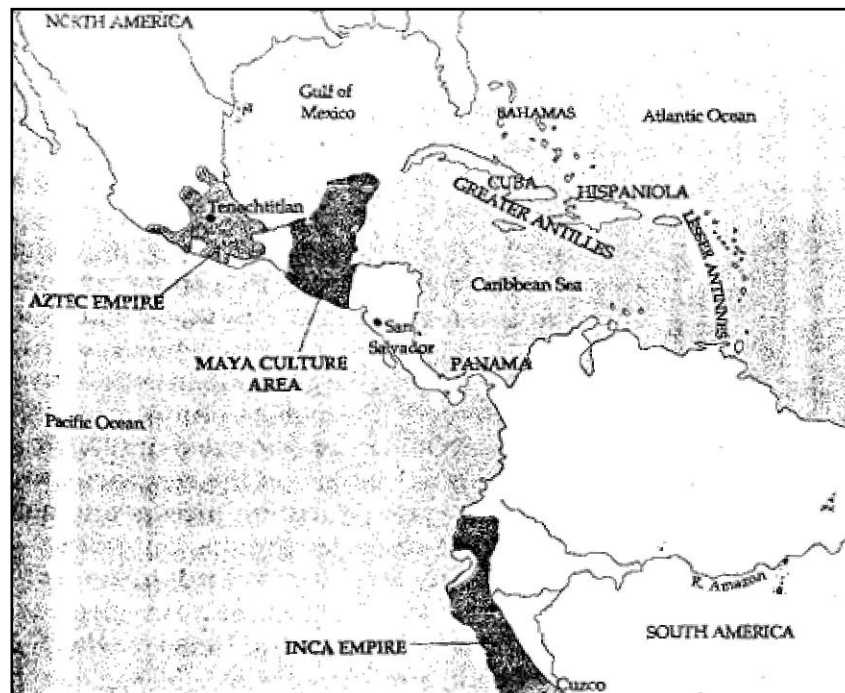
Dona Marina - Page - 178

- | | |
|---|-----|
| Q.i) Who was Dona Marina | [1] |
| ii) Why Dona Marina was called 'Matinche' | [2] |
| iii) Write the author's name of the 'True History of the Conquest of Mexico'. | [1] |
| iv) Write the role of Dona Marina in the defeat of the Aztecs. | [4] |

MAP Skill

Map of South America : Page - 172

- Q. Locate the followings city on the outline map of the South America .
Santa Fe, Quito, Lima, Santiago, Buenos, Aires, Rio de Janeiro



MAP 3: Africa, indicating regions from where slaves were captured

