

Chapter 3

Plants

I. Choose the correct answer.

Question 1.

The function of leaf is to _____.

- (a) Give Support
- (b) Fix the plant firmly
- (c) Produce food
- (d) None of the above

Answer:

- (c) Produce food

Question 2.

An example for taproot is _____.

- (a) Paddy
- (b) Grass
- (c) Mango
- (d) Ragi

Answer:

- (c) Mango

Question 3.

_____ supports the plant.

- (a) Root
- (b) Leaf
- (c) Flower
- (d) Stem

Answer:

- (d) Stem

Question 4.

Most plants grow from the _____.

- (a) root
- (b) leaf
- (c) flower
- (d) seed

Answer:

- (d) seed

Question 5.

Roots are poorly developed in _____.

- (a) agaya thamarai
- (b) neem
- (c) teak
- (d) date palm

Answer:

- (a) agaya thamarai

Question 6.

If part X will be absent in a plant, new plants will not be produced. X is _____.

- (a) stem
- (b) root
- (c) flower
- (d) leaves

Answer:

- (c) flower

Question 7.

The plant is adapted to grow in deserts as it has _____.

- (a) fleshy stem
- (b) needle like roots
- (c) leaves changed to spine
- (d) both a and c

Answer:

- (d) both a and c

Question 8.

An example of many seeded fruit is _____.

- (a) pomegranate
- (b) mango
- (c) apricot
- (d) peach

Answer:

- (a) pomegranate

Question 9.

Which of the following plant parts take part in absorption of water and exchange of gases respectively?

- (a) P and R
- (b) R and S
- (c) S and Q
- (d) T and P

Answer:

- (d) T and P

II. Find the odd one.

Question 1.

- (a) Carrot
- (b) Radish
- (c) Tomato
- (d) Beetroot

Answer:

- (c) Tomato

Question 2.

- (a) Cabbage
- (b) Greens
- (c) Turmeric
- (d) Spinach

Answer:

- (c) Turmeric

Question 3.

- (a) Neem
- (b) Aloe vera
- (c) Datepalm
- (d) Opuntia

Answer:

- (a) Neem

Question 4.

- (a) Coconut
- (b) Mango
- (c) Apricot
- (d) Orange

Answer:

- (d) Orange

Question 5.

- (a) Hydrilla
- (b) Opuntia
- (c) Water hyacinth
- (d) Vallisneria

Answer:

- (b) Opuntia

III. Short answers.

Question 1.

Name the parts of a plant.

Answer:

The basic parts of a plant are root, stem, leaf, flower, fruit and seed.

Question 2.

Name the types of roots.

Answer:

They are of two main types:

1. tap root and
2. fibrous root.

Question 3.

Write any two functions of the leaves.

Answer:

- Leaf prepares food for the plant with the help of water, carbondioxide and in the presence of sunlight and chlorophyll.
- The loss of water in the form of gas (water vapour) happens through the tiny pores in the leaves.

Question 4.

Write the parts of a flower.

Answer:

- Stamen,
- Pistil,
- Petal,
- Sepal

Question 5.

Name the types of plants based on thier habitat

Answer:

- Land (Terrestrial) plants
- Water (aquatic) plants

Question 6.

Write any two adaptations of desert plants.

Answer:

- Leaves are changed to spines to reduce the loss of water.
- The stem is green and fleshy. They store water and produce food.

Question 7.

Write the names of some water plants.

Answer:

- Water hyacinth (Agaya thamarai),
- Pistia.

IV. Answer the following Questions.

Question 1.

Write any two functions of each:

(a) Stem _____, _____

Answer:

Supports, Transports

(b) Root _____, _____

Answer:

Fixation, Absorption

(c) Flower _____, _____

Answer:

Develops, Reproduce

Question 2.

Why is leaf called food factory of the plant?

Answer:

Leaf prepares food for the plant with the help of water, carbon dioxide and in the presence of sunlight and chlorophyll. This process is called photo synthesis. Hence, it is called the food factory of the plant.

Question 3.

Differentiate between taproot and fibrous root.

Answer:

S.No	Taproot	Fibrous root
1.	Thick main root that goes deep into the soil.	No main root and the roots do not go deep into the soil.
2.	Side roots are developed from the main root.	Roots are developed from the base of the stem.
3.	Looks like a long tap E.g., Tamarind, Guava.	Looks like a bunch. E.g., Corn, Sugarcane.

Question 4.

Give two examples of :

(a) Fruit having only one seed

(b) Fruit having many seeds

Answer:

(a) Some fruits have only one seed.
E.g., Apricot, Mango, Coconut and Peach.

(b) Some fruits have many seeds.
E.g., Papaya, Watermelon and Orange.

Question 5.

Name two free floating plants.

Answer:

1. Water hyacinth (Agaya thamarai)
2. Pistia.

Question 6.

Look at the picture of a water lily.

- (a) Which parts of the plant can you see?
(b) Where are the plant's roots and stem?

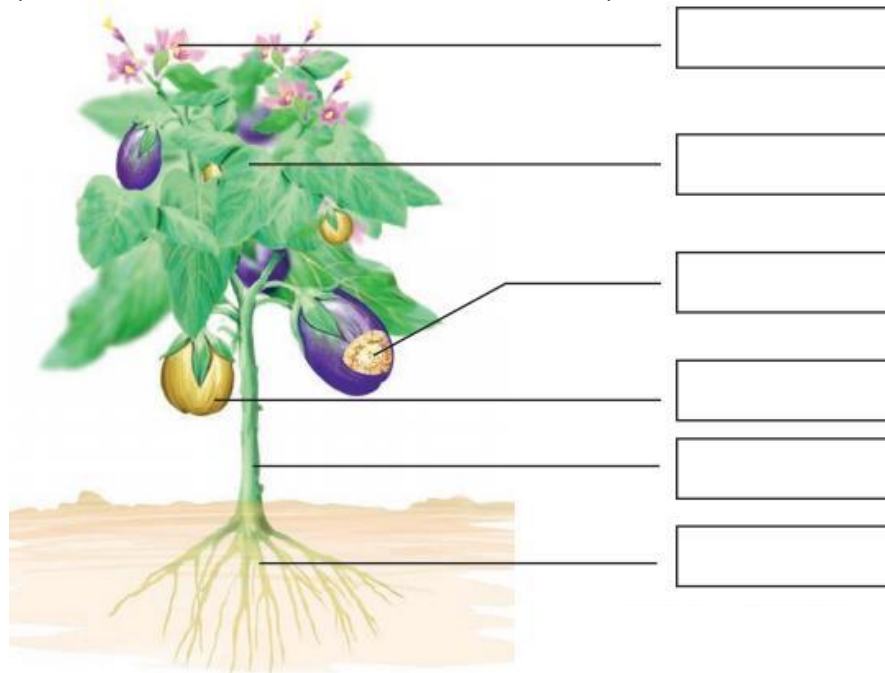
Answer:

- (a) Flower, Leaf
(b) The plant's roots and stem are in the bottom of the water bodies.

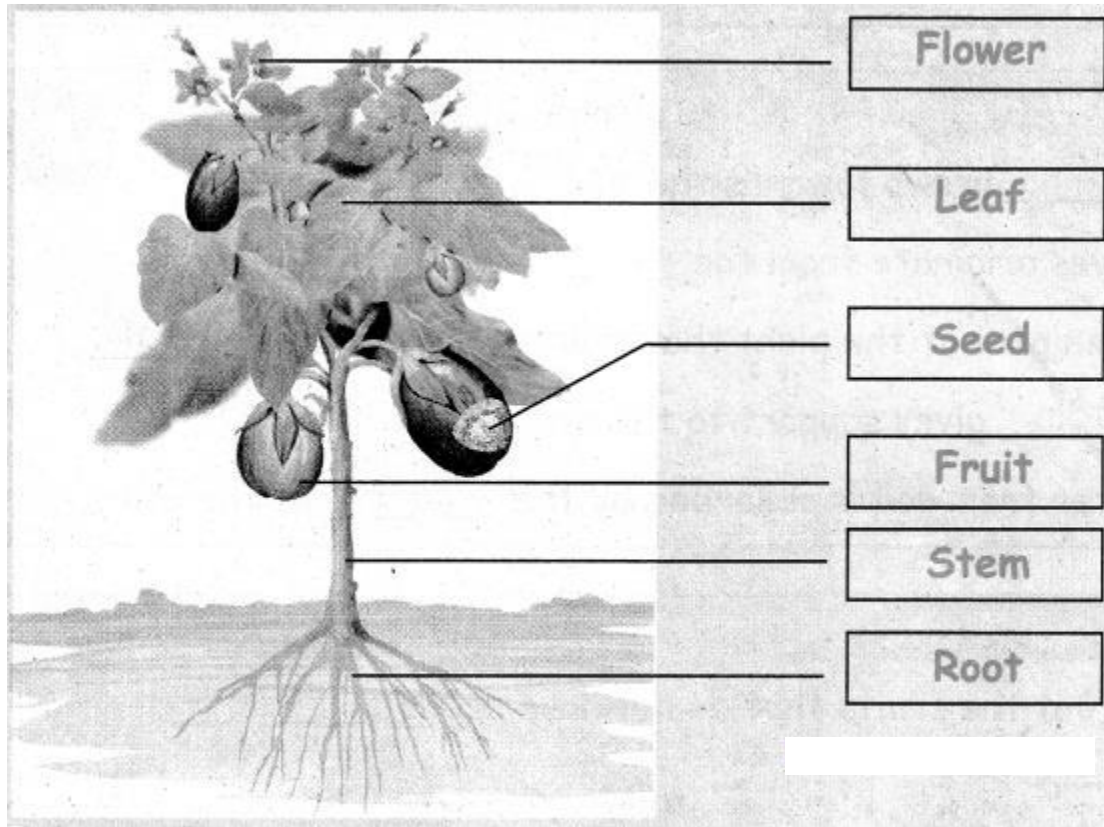
In-Text Activity:

Warm-up (Text Book Page No. 58):

Unscramble the words and label the parts of the plant.
(ETSM, TORO, ELFA, FURTI, LOFEWR, SDEE)



Answer:



Let us Do (Text Book Page No. 60):

Take two small potted plants. Cut the root of one of the plants and fix it in the pot. Now water the plants for two to three days. You will observe that the plant without roots will wilt and die. In the absence of roots, plants die.

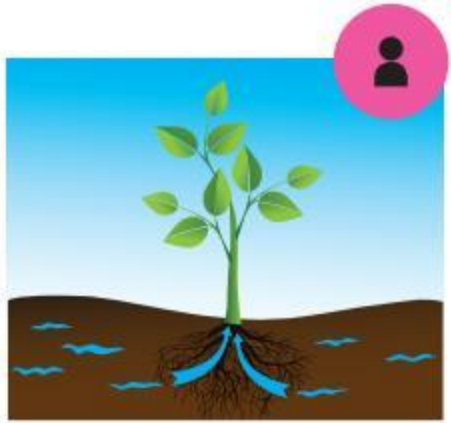
This activity proves that the function of the roots is to absorb _____ and _____ from the soil.

Answer:

Water, Minerals

Let us Write (Text Book Page No. 60):

True or False



Question 1.

The roots grow into the soil.

Answer:

True

Question 2.

Fibrous root has a main root.

Answer:

False

Question 3.

Root absorbs water from soil.

Answer:

True

Question 4.

Potato stores food in its root.

Answer:

False

Question 5.

Grass has fibrous roots.

Answer:

True

Fill in the blanks.

Question 1.

_____ grows towards the sunlight.

Answer:

Stem

Question 2.

Leaves originate from the _____ .

Answer:

surface of the stem

Question 3.

Green part of the plant that makes food is called _____ .

Answer:

leaf

Question 4.

_____ gives support to the whole plant.

Answer:

Stem

Question 5.

Water from soil is absorbed by the _____ of the plant.

Answer:

root

Think and Write

Question 1.

List out the fruits that do not have seeds. _____ .

Answer:

Pineapple, Banana

Question 2.

Write down the names of the fruit trees that you have never seen but have tasted their fruits. _____ .

Answer:

Strawberry tree, Plum tree, Pear tree

Let us Do

Connect the leaf with its fruit.

1.



2.



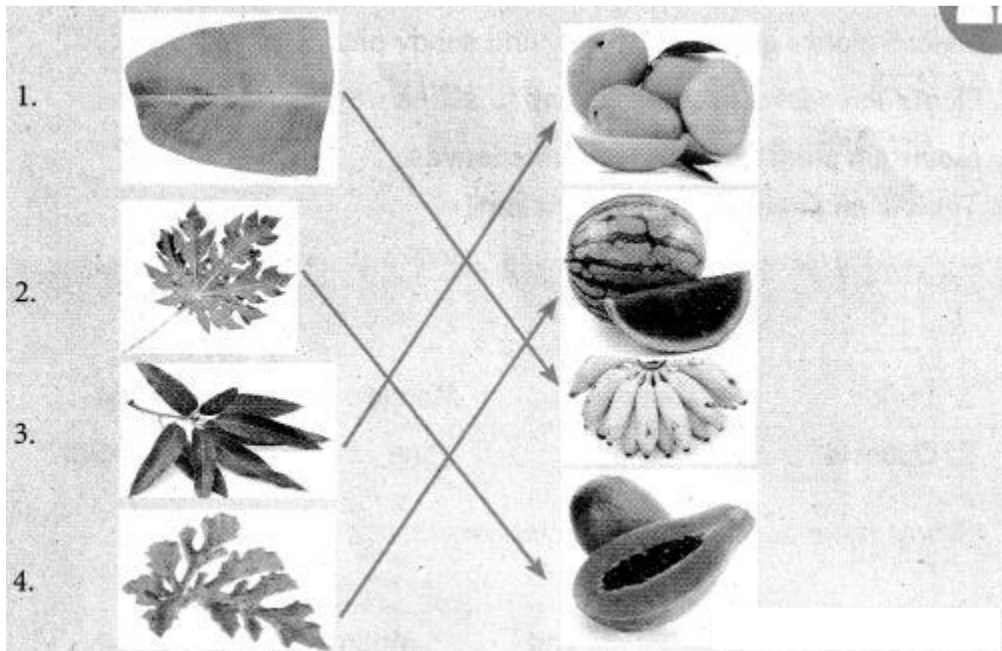
3.



4.



Answer:



Let us Connect

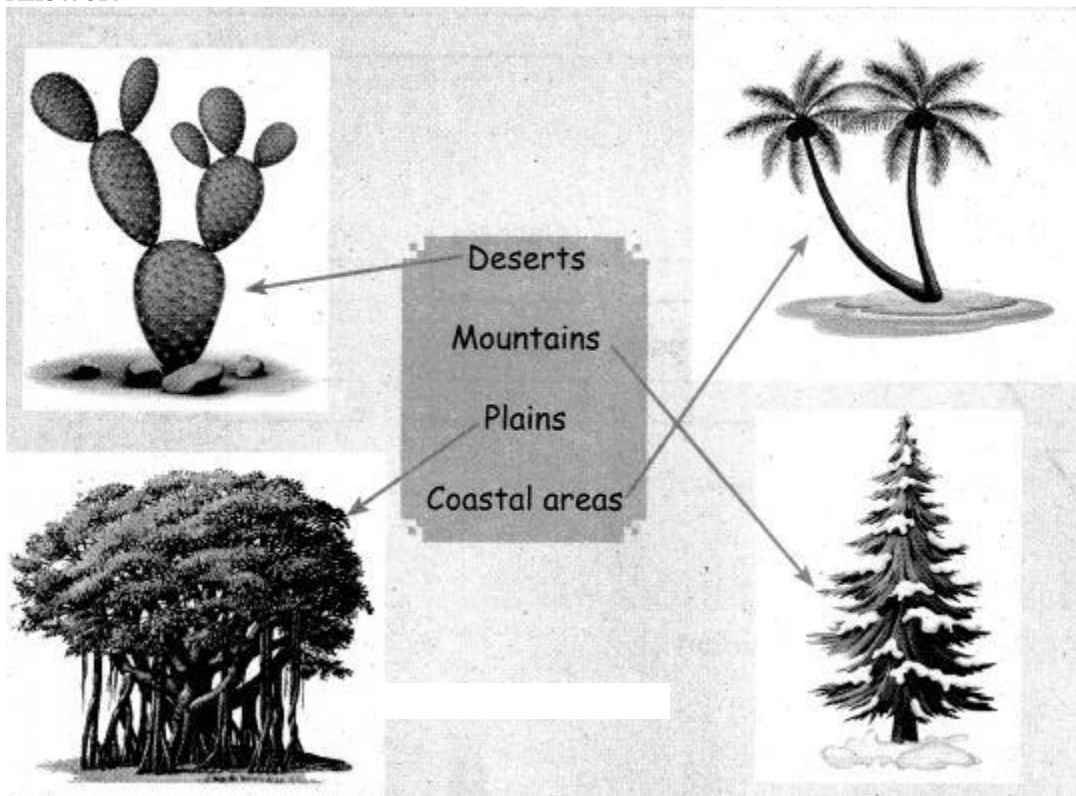
Match the plants with their living places.



Deserts
Mountains
Plains
Coastal areas



Answer:



Let us Try

A. Select the 'INCORRECT' statement from the following.

1. Desert plants grow in hot, dry and sandy places.
2. Plants in coastal areas tolerant to saline water.
3. Mountain plants have needle like leaves.
4. Teak is an example of desert plant.

Answer:

4. Teak is an example of desert plant.

B. Tick (✓) the odd one.

- | | | | |
|------------|-----------|-------|-----------|
| 1. Teak | Tamarind | Mango | Opuntia |
| 2. Opuntia | Aloe vera | Pine | Date palm |

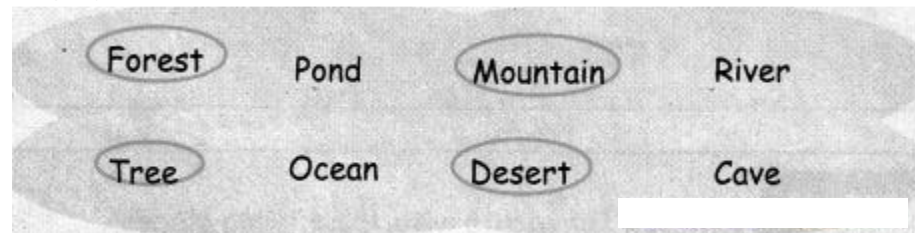
Answer:

- | | | | |
|------------|-----------|-------|-----------|
| 1. Teak | Tamarind | Mango | Opuntia |
| 2. Opuntia | Aloe vera | Pine | Date palm |

C. Circle the places which are land habitats.



Answer:



Let us Try

A. Mark "L" for land plants and W' for water plants.

Neem tree

Lotus

Opuntia

Vallisneriya

Water hyacinth

Date palm

Hydrilla

Lily

Answer:

Neem tree

Lotus

Opuntia

Vallisneriya

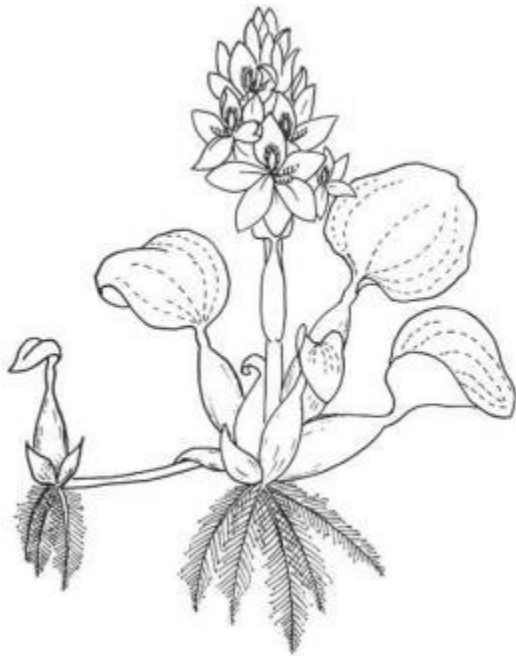
Water hyacinth

Date palm

Hydrilla

Lily

B. Colour the water hyacinth plant.



Answer:

Activity to be done by the students

C. Write true or false.

Question 1.

Fixed rooted plants are present in water bodies.

Answer:

True

Question 2.

Leaves of lotus are submerged in the water.

Answer:

False

Question 3.

Lotus plants are found in many ponds.

Answer:

True

Question 4.

Water hyacinth freely float with the help of a spongy body filled with air.

Answer:

True