

## Chapter-5

### Worksheet-2

1. Water rises in the xylem tubes due to \_\_\_\_\_.
2. The tissue that transport food in plants is the \_\_\_\_\_.
3. Aquatic animals like fishes excrete body wastes as \_\_\_\_\_.
4. The loss of water from the stomata is called \_\_\_\_\_.
5. Blood consists of \_\_\_\_\_, \_\_\_\_\_, and platelets.
6. A certain type of cells, helps in destruction of disease causing microorganisms are known as
  - (a) thrombocytes
  - (b) white blood cells
  - (c) osteocytes
  - (d) red blood cells
7. The muscular tube through which stored urine is passed out of the body is called
  - (a) kidney
  - (b) ureter
  - (c) urethra
  - (d) urinary bladder
8. Which among the following contain haemoglobin?
  - (a) Red blood cells
  - (b) White blood cells
  - (c) Both (a) and (b)

(d) None of these

9. The main excretory product in human being is

\_\_\_\_\_.

10. Name the functional units of the major excretory organ of humans.

11. Name some useful products or materials that are carried by blood.

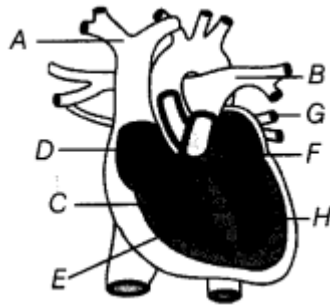
12. Match structures given in Column I with functions given in Column II.

Column I	Column II
(i) Stomata	(a) Absorption of water
(ii) Xylem	(b) Transpiration
(iii) Root hairs	(c) Transport of food
(iv) Phloem	(d) Transport of water
	(e) Synthesis of carbohydrates

13. Arrange the following statements in the correct order in which they occur during the formation and removal of urine in human beings.

- (a) Ureters carry urine to the urinary bladder.
- (b) Wastes dissolved in water is filtered out as urine in the kidneys.
- (c) Urine stored in urinary bladder is passed out through the urinary opening at the end of the urethra.
- (d) Blood containing useful and harmful substances reaches the kidneys for filtration.
- (e) Useful substances are absorbed back into the blood.

14. Observe the given diagram of human heart and label all the parts from A to H.



15. Name the tissues of a plant which carries
- (a) water and minerals from roots to the leaves.
  - (b) food from the leaves to the other parts of the plant.
16. What are stomata? Give two functions of stomata.
17. Give one function of each of the following organs,
- (a) Blood vessels
  - (b) Kidney
18. Name the process and the organ which help in removing the following wastes from the body.
- (a) Carbon dioxide
  - (b) Undigested food
  - (c) Urine
  - (d) Sweat

19. What is the function of root hair?

20. Describe the function of the heart.