

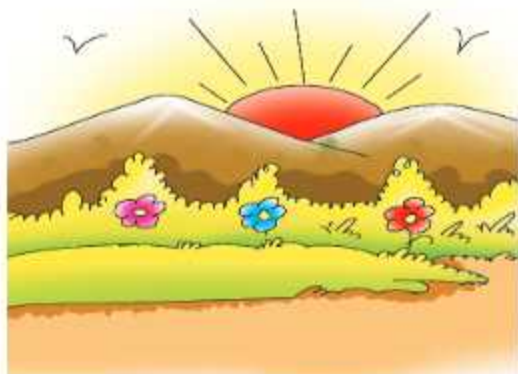
**OBJECTIVES**

1. To Know the importance of time in daily life
2. To know about names of days and about weeks.
3. Tell the months of year.
4. Tell about winter and summer seasons.
5. Understand the importances of time in modern era.

**Do you Remember**

1. What time of day is it, when you come to school ?
2. When does the sun rise?
3. When is the sun exactly above our hand ?
4. What time of day is it, when you go home from school and do your homework?
5. At what time do you play with you friends?
6. At what time of day does your grandmother tell you stories and riddles?
7. At what time of day does your family watch television together?
8. At what time do you sleep after dinner?

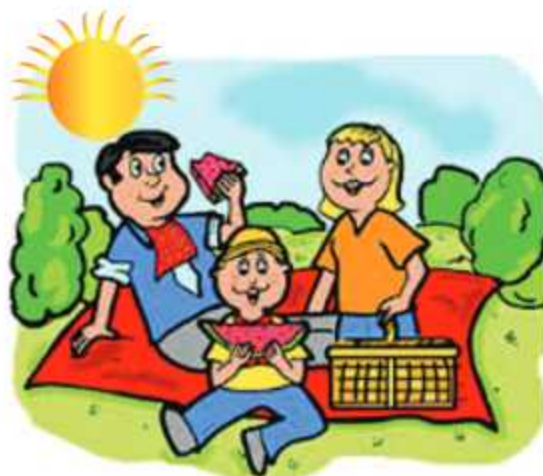
9.



What time of the day does this picture depict?

10.

By looking at the picture make a guess about the time?



11.



Look at the picture and write about the time below the picture.

12.

What time of the day does this picture depict?



### 13. Fill the box: Morning/Afternoon/Evening/Night

(a) At what time you go to school?

(b) At what time you get recess?

(c) At what time you get full break?

(d) At what time you play?

(e) At what time watch T.V.?

(f) At what time we sleep at night?

(g) At what time do you get up in the morning?



## Let's Learn

### Days of Week

Children, a week has seven days. First day of the week is Monday. Monday is first working day of a week. Last day of a week is Sunday, is a holiday.

Monday	Tuesday	Wednesday	Thursday	Friday	Saturday	Sunday
First day	Second Day	Third day	Fourth day	Fifth day	Sixth day	Seventh day

Make students learn this rhyme orally.

Monday is very cool  
Tuesday surely go to school  
Wednesday is good day  
Thursday we should pray.  
Friday is the day for study  
Saturday dress like a buddy  
Sunday is holiday for joy  
Play with friends and enjoy.





## Days of a week (Ask students)

- Which day is holiday in a week ?
- Which day is first working day of the week?
- How many days are there in a week?
- Which day comes after days written below:  

Sunday	<input type="text"/>
--------	----------------------

Tuesday	<input type="text"/>
---------	----------------------
- Which day comes before days written below:  

<input type="text"/>	Friday
----------------------	--------

<input type="text"/>	Mondays
----------------------	---------
- Which day comes two days after days written below:  

Tuesday	<input type="text"/>
---------	----------------------

Sunday	<input type="text"/>
--------	----------------------

Wednesday	<input type="text"/>
-----------	----------------------
- Looking at the timetable given below answer the questions no (i) and (ii)

Monday	Verasat -E Khalsa is closed for the general public
Tuesday	Furniture Market remain is closed for the general public
Wednesday	The museum is closed for the general public
Thursday	Kamal cinema hall is closed for the general public
Friday	Doll house is closed for the children
Saturday	Punjab school Education board is closed for the general public
Sunday	Schools are closed for staff and the students.

- When is kamal cinema Hall closed for the general public ?
- On which day is the museum closed for the general public ?



## Calender

- \* Calender shows days, weeks and months of an year.
- \* Date is the special day of a month.
- \* Calender helps us to know which day is on which date?

2022

January						
sun	mon	tue	wed	thu	fri	sat
						1
2	3	4	5	6	7	8
9	10	11	12	13	14	15
16	17	18	19	20	21	22
23	24	25	26	27	28	29
30	31					

February						
sun	mon	tue	wed	thu	fri	sat
		1	2	3	4	5
6	7	8	9	10	11	12
13	14	15	16	17	18	19
20	21	22	23	24	25	26
27	28					

March						
sun	mon	tue	wed	thu	fri	sat
		1	2	3	4	5
6	7	8	9	10	11	12
13	14	15	16	17	18	19
20	21	22	23	24	25	26
27	28	29	30	31		

April						
sun	mon	tue	wed	thu	fri	sat
					1	2
3	4	5	6	7	8	9
10	11	12	13	14	15	16
17	18	19	20	21	22	23
24	25	26	27	28	29	30

May						
sun	mon	tue	wed	thu	fri	sat
1	2	3	4	5	6	7
8	9	10	11	12	13	14
15	16	17	18	19	20	21
22	23	24	25	26	27	28
29	30	31				

June						
sun	mon	tue	wed	thu	fri	sat
			1	2	3	4
5	6	7	8	9	10	11
12	13	14	15	16	17	18
19	20	21	22	23	24	25
26	27	28	29	30		

July						
sun	mon	tue	wed	thu	fri	sat
					1	2
3	4	5	6	7	8	9
10	11	12	13	14	15	16
17	18	19	20	21	22	23
24	25	26	27	28	29	30
31						

August						
sun	mon	tue	wed	thu	fri	sat
	1	2	3	4	5	6
7	8	9	10	11	12	13
14	15	16	17	18	19	20
21	22	23	24	25	26	27
28	29	30	31			

September						
sun	mon	tue	wed	thu	fri	sat
				1	2	3
4	5	6	7	8	9	10
11	12	13	14	15	16	17
18	19	20	21	22	23	24
25	26	27	28	29	30	

October						
sun	mon	tue	wed	thu	fri	sat
						1
2	3	4	5	6	7	8
9	10	11	12	13	14	15
16	17	18	19	20	21	22
23	24	25	26	27	28	29
30	31					

November						
sun	mon	tue	wed	thu	fri	sat
		1	2	3	4	5
6	7	8	9	10	11	12
13	14	15	16	17	18	19
20	21	22	23	24	25	26
27	28	29	30			

December						
sun	mon	tue	wed	thu	fri	sat
					1	2
3	4	5	6	7	8	9
10	11	12	13	14	15	16
17	18	19	20	21	22	23
24	25	26	27	28	29	30
31						

### Dear students ! Look at the calender carefully

1. You will see that second saturday in the month of Febraury falls on 12th so we will write as 12 - 02 - 2022
2. The Republic Day fall 26th of January and it is an wednesday.
3. In the whole year, there are 7 month with 31 day, 4 month with 30 days and then only month with 28/29 days.

### Let's Do



1. How many sundays are there in the month of october, 2022
2. Neelam's uncle is getting massed on the first sunday of November. Find out the date of the wedding ?
3. Which day is it on 5th september, 2022 ?



## Let's Learn

## Seasons

You have already been given knowledge about out phases of a day, Morning, Afternoon, Evening, and Night in the first Class. In the second class, we will tell you about four seasons of year-Winter, Spring, Summer are Autumn.

Teacher will tell the children that December, and till January and February are months of winter. March and April are of spring season. After this summer season is very long which runs from May. June, July, August and till September. October and November are months of autumns. In the month of December-Winter season comes again.

For understanding of seasons and weather students should learn this poem.

"January February are  
months of winter  
March April for spring  
May June July August  
September, Summer is the king  
October November are  
months for autumn  
December again for winter begin  
In this way seasons cycle is repeating."

## Let's Do



- (1) How many days are there in the month of February in a leap year?  
(a) 28                      (b) 29                      (c) 30
- (2) Which month of the following has winter season?  
(a) January                (b) May                      (c) August
- (3) Which of following months has autumn season?  
(a) October                (b) December              (c) March
- (4) Which month is of spring season?  
(a) March                      (b) December              (c) October
- (5) Which month is of summer?  
(a) January                (b) June                      (c) December



## Let's Learn

### Periods of Time

Many events of our life happen in a moment, many happen in days or months and many happen in years. Teacher will take examples from daily life to teach time and occurrence of events in such a way that children can know and understand easily.

Teacher should teach the children about time and occurring of events with the help of examples from his/her day life or from school.

### Let's Do



- (1) Sunday comes after how many days?  
(a) After 6 days      (b) After 10 days      (c) After 5 days
- (2) How much time will it take to repeat the same date?  
(a) After a week      (b) After a month      (b) After fifteen days
- (3) After how much time Lohri festival comes ?  
(a) After a month      (b) After six months      (c) After a year
- (4) How long does a tree take to grow?  
(a) Days      (b) Minutes      (c) Years.
- (5) After how much time your birthday comes?  
(a) After a month      (b) After 6 month      (c) After a year





### Points to Remember

- \* There are seven days in a week.
- \* Sunday is a holiday in the week.
- \* Month is longer than week.
- \* 12 months make a year.
- \* February is the shortest month having 28 or 29 days.
- \* There are summer holidays in school in June and it is the sixth month of the year.
- \* Days make a week, weeks make a month and months make a year.
- \* If February has 29 days in any year then that year is called Leap year.
- \* Lohri festival is celebrated in the month of January and there is winter season in this month.
- \* Annual exams are held in the month of March and it is the third month of a year.

