

## Chapter-4

### Worksheet-2

1. \_\_\_\_\_ transport oxygen to every part of the body.
2. In blood a pigment called \_\_\_\_\_ bind with oxygen.
3. Muscle cramps occur due to accumulation of \_\_\_\_\_ in the muscles.
4. During \_\_\_\_\_ the lungs contract.
5. The \_\_\_\_\_ is a tube-like structure present in human respiratory system and is commonly known as wind pipe.
6. \_\_\_\_\_ is the muscular partition which between chest and abdominal cavity.
7. Yeast is used in wine and beer industries because it respire  
(a) aerobically producing oxygen.  
(b) aerobically producing alcohol.  
(c) anaerobically producing alcohol.  
(d) anaerobically producing CO<sub>2</sub>.
8. During the process of exhalation, the ribs move  
(a) down and inwards.  
(b) up and inwards.  
(c) down and outwards.  
(d) up and outward.

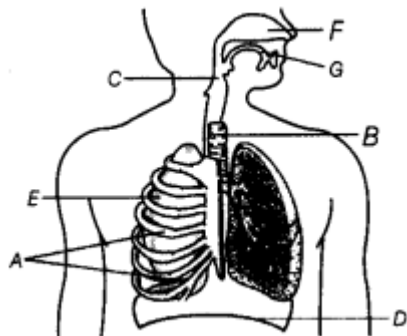
9. Earthworms and frogs breathe through their skin because of which the skin of both the organisms is
- (a) moist and rough.
  - (b) dry and rough.
  - (c) dry and slimy.
  - (d) moist and slimy.
10. Fish breathe with the help of gills which are richly supplied with blood vessels. The gills help the fish to
- (a) take in oxygen from air.
  - (b) release waste substances in water
  - (c) absorb nutrients present in water.
  - (d) take in oxygen dissolved in water.
11. The cellular respiration process takes place in which cell organelle?  
Answer: Cellular respiration takes place in the mitochondria of the cell.
12. Name the end products of anaerobic respiration in yeast.
13. What are the end products of aerobic respiration?
14. In the experiment, where we exhale into lime water containing glass. What changes were observed by you?
15. Whenever we feel drowsy or sleepy, we start yawning. Does yawning help us in anyway?
16. Pick the odd one out from each of the groups given below on the basis of respiratory organs. Give reason for your answer.
- (a) Cockroach, grasshopper, snail, ant
  - (b) Lizard, cow, earthworm, snake
  - (c) Crocodile, whale, dolphin, fish

(d) Snake, tadpole, crow, goat

17. Smoking is considered harmful due to certain effects. Explain in brief.

18. There are three animals named A, B and C. Among them A can stay on land as well as in water. When it stays at land it respire through lungs but when it goes into water, it respire through its moist skin. Animal B has specific organs to respire in the water which is not found in any other water animal. While animal C is a water animal which respire through nostrils and lungs. Now give the name of animal A, B and C.

19. Observe the given diagram of human respiratory system. List the organs from (A) to (G).



20. List the similarities and differences between aerobic and anaerobic respiration.