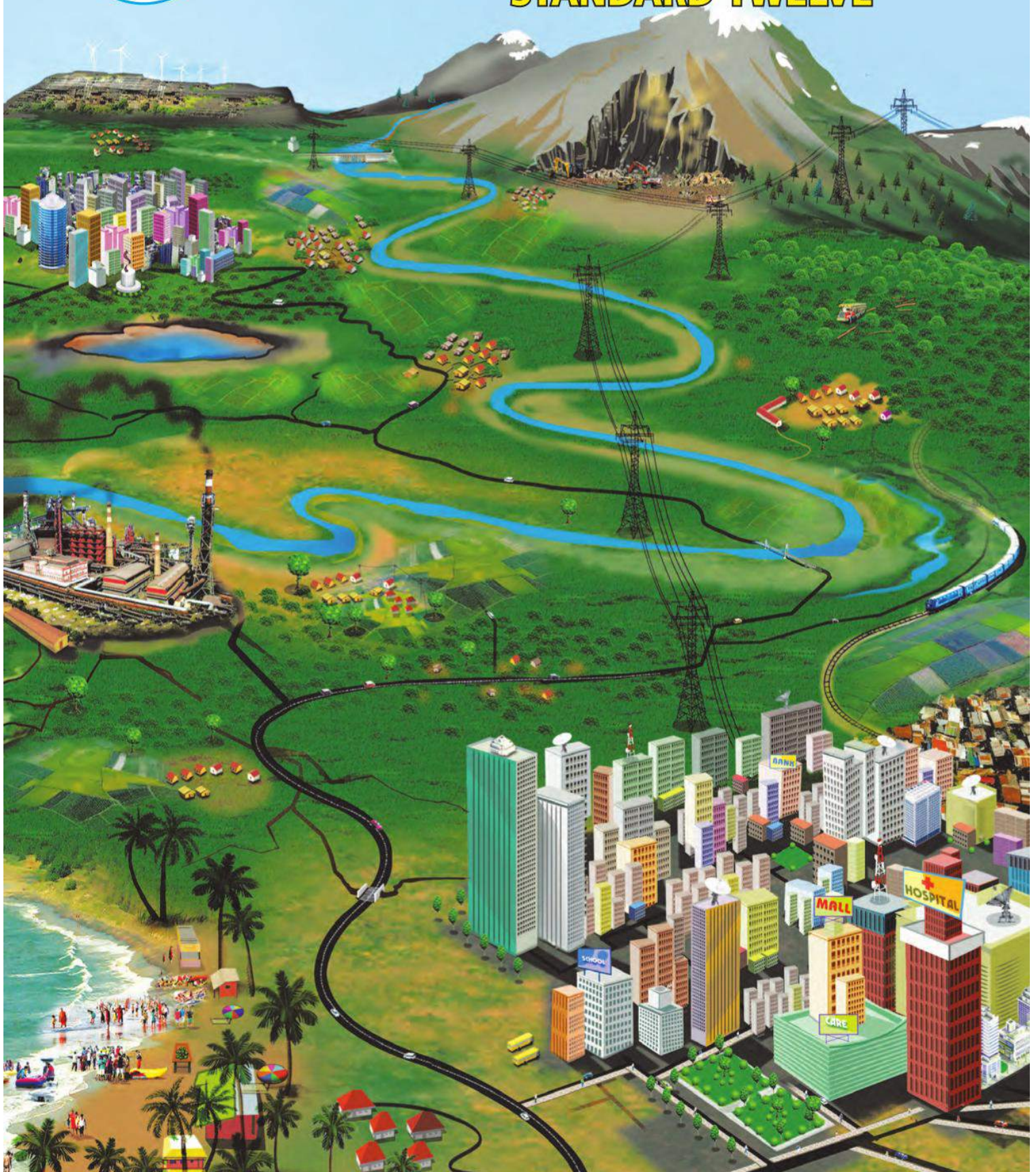




# GEOGRAPHY

## STANDARD TWELVE





The Coordination Committee formed by GR No. Abhyas - 2116/(Pra.Kra.43/16) SD - 4 Dated 25.04.2016 has given approval to prescribe this textbook in its meeting held on 30.01.2020 and it has been decided to implement it from academic year 2020-21.

# GEOGRAPHY

## STANDARD TWELVE



V4A4G4

Download DIKSHA App on your smartphone. If you scan the Q.R. Code on this page of your textbook, you will be able to access full text and the audio-visual study material relevant to each lesson provided as teaching and learning aids.



2020

**Maharashtra State Bureau of Textbook Production and  
Curriculum Research, Pune.**



**First Edition :** © Maharashtra State Bureau of Textbook Production and Curriculum Research, Pune - 411 004.  
2020

The Maharashtra State Bureau of Textbook Production and Curriculum Research reserves all rights relating to the book. No part of this book should be reproduced without the written permission of the Director, Maharashtra State Bureau of Textbook Production and Curriculum Research, 'Balbharati', Senapati Bapat Marg, Pune 411004.

**Geography Subject Committee:**

Dr. N. J. Pawar, Chairman

Dr. Suresh Jog, Member

Dr. Rajani Manikrao Deshmukh, Member

Dr. Kalyani Abhay Deshpande, Member

Shri Sanjaykumar G. Joshi, Member

Smt. Meena Sanjiv Khare, Member

Shri Sachin Parshuram Aher, Member

Smt. Kalpana Vishwas Mane, Member

Shri Gourishankar Dattatray Khobare, Member

Shri R. J. Jadhav, Member-Secretary

**Illustrations :** Shri Bhatu Ramdas Bagle

**Cover :** Shri Bhatu Ramdas Bagle

**Cartography :** Shri Ravikiran Jadhav

**Translation Coordination :**

Shri Ravikiran Jadhav

Special Officer (Geography)

**Typesetting :** DTP Section, Textbook Bureau, Pune

**Paper :** 70 GSM Creamwove

**Print Order :**

**Printer :**

**Geography Study Group:**

Smt. Samruddhi Milind Patwardhan

Dr. Hanmant Laxman Narayankar

Smt. Jagruti Rohan Mahajani

Smt. Nilam Dnyaneshwar Deshmukh

Dr. Kalpana Prabhakar Deshmukh

Dr. Parmeshwar Vishwanathrao Poul

Dr. Anna Dyandeo Garad

Smt. Surekha Pradip Dounde

Dr. Hemant Mangeshrao Pednekar

Shri. Pravin Prakash Kokane

Dr. Santosh Ganapati Jambhale

Shri Amogi Tippiana Shinge

Shri Pandit Baburao Chavan

**Production :**

Shri Sachchitanand Aphale

Chief Production Officer

Shri Vinod Gawde, Production Officer

Mrs. Mitali Shitap, Assistant Production Officer

**Publisher :**

Shri Vivek Uttam Gosavi,  
Controller  
Maharashtra State Textbook  
Bureau, Prabhadevi,  
Mumbai - 400 025





## The Constitution of India

### Preamble

WE, THE PEOPLE OF INDIA, having solemnly resolved to constitute India into a SOVEREIGN SOCIALIST SECULAR DEMOCRATIC REPUBLIC and to secure to all its citizens:

JUSTICE, social, economic and political;  
LIBERTY of thought, expression, belief, faith and worship;

EQUALITY of status and of opportunity;  
and to promote among them all

FRATERNITY assuring the dignity of the individual and the unity and integrity of the Nation;

IN OUR CONSTITUENT ASSEMBLY this twenty-sixth day of November, 1949, do HEREBY ADOPT, ENACT AND GIVE TO OURSELVES THIS CONSTITUTION.

## NATIONAL ANTHEM

Jana-gana-mana-adhināyaka jaya hē  
Bhārata-bhāgya-vidhātā,

Panjāba-Sindhu-Gujarāta-Marāthā  
Drāvida-Utkala-Banga

Vindhya-Himāchala-Yamunā-Gangā  
uchchala-jaladhi-taranga

Tava subha nāmē jāgē, tava subha āsisa māgē,  
gāhē tava jaya-gāthā,

Jana-gana-mangala-dāyaka jaya hē  
Bhārata-bhāgya-vidhātā,

Jaya hē, Jaya hē, Jaya hē,  
Jaya jaya jaya, jaya hē.

## PLEDGE

India is my country. All Indians  
are my brothers and sisters.

I love my country, and I am proud  
of its rich and varied heritage. I shall  
always strive to be worthy of it.

I shall give my parents, teachers  
and all elders respect, and treat  
everyone with courtesy.

To my country and my people,  
I pledge my devotion. In their  
well-being and prosperity alone lies  
my happiness.



## - Preface -

Dear Students,

You are welcome to Class XII. You have studied various concepts in Geography under Environmental Studies from Class III to Class V and in Social Studies from Class VI to Class X. Like other subjects, it gives me a great pleasure to present before you a separate textbook of Geography for 100 marks.

Broadly, it is accepted that Geography is the study of structure, processes and interactions between physical and human environment. You have studied Physical Geography in the preceding class. Equally important component of Geography is Human Geography. At the Higher Secondary level, Human Geography has been included in Class XII textbook. We see that human settlements are distributed in different parts on the earth. We see that this distribution is uneven and full of diversity. This happens mainly because of the impact of physical factors. This brings variety in the population, settlements and the economic activities of man. The purpose for which the land has to be used is decided accordingly. Land cover changes as per the change in the land use. All these aspects are studied in Human Geography. It is important to understand the cause –and –effect relationship when you study various components of the chapters.

Changes have been made in Practical Geography too as per the contemporary time. For example, you have to use the Balbharati App for doing surveying. This will help you to get acquainted with the latest technology. Also, you will study how to apply statistical techniques to study human variables. You will understand how to use them in analysis and drawing conclusions.

It is said that Geography is the science that lays stress on observation. Observation, cognition, critical thinking, analysis, etc are the skills required in this subject. Use these skills and develop them. Activities which stimulate your thinking power, imaginative power and creativity have been included in the textbook. You should do all these activities. As you read the chapters, you will realise how they are related to our day-to-day life. Various educational tools have been used in the textbook to facilitate understanding of the concepts in the textbook. Through QR code you can study more relevant information related to the components of the textbook.

The scope and importance of this subject is increasing day-by-day. And so, you will surely like the textbook which associates with your daily life. Please let us know your views about it.

Heartiest Wishes to all of You!



**(Vivek Gosavi)**  
**Director**

Pune

Date : 21 February 2020

Bharatiya Saur Dinank : 2 Phalguna 1941

Maharashtra State Bureau of Textbook  
Production and Curriculum Research, Pune



## - Standard XII Geography -

### Competencies

- Understanding factors affecting distribution of population.
- Understanding various components of population growth.
- Examining the trends of population change.
- Examining population growth as a problem or an opportunity.
- Explaining the economic and social effects of population structure.
- Explaining variables related to migration.
- Explaining positive and negative effects of migration.
- Explaining the factors affecting location and growth of human settlements.
- Understanding why settlements grow in specific patterns.
- Analysing the patterns of human settlements on a global scale.
- Understanding the nature of primary economic activities.
- Understanding correlation between the geographical factors and various primary economic activities.
- Showing the global distribution of primary economic activities.
- Explaining the changes in the patterns of primary economic activities.
- Understanding the nature of secondary economic activities.
- Explaining the factors affecting location of industries.
- Explaining the distribution of major industries in the world.
- Understanding different types of industries.
- Understanding the nature of tertiary economic activities.
- Understanding the relationship between geographical factors and some of the tertiary economic activities.
- Explaining the relationship between trade, tourism and transport.
- Understanding the changing trends in trade, tourism and transport.
- Understanding the concept of 'region'.
- Understanding various types of regions.
- Examining various factors which affect development of a region.
- Examining regional imbalance and ways to reduce it.
- Reflecting on various geographical concepts studied till now.
- Relating the importance of the study of Geography in day-to-day life.
- Understanding the ever-increasing scope and application of Geography in various fields.
- Examining the nature of Geography as a field of study.

### Competencies - Practical

- Conducting household surveys through the use of Apps
- Data collection through the use of Mobile App
- Data organization on the basis of objective behind data collection
- Understanding the use of statistical techniques in geography
- Deciding which statistical technique has to be used according to the data organized
- Drawing suitable diagrams to show the available data
- Analyzing the data and drawing conclusions on the basis of the representation of data
- Correlating two variables in the given data and expressing their relationship numerically
- Interpreting the toposheet with respect to human elements considering the physical factors



## - For Teachers -

- ✓ To begin with, get familiar with the textbook yourself.
- ✓ Please understand the characteristics of the textbook carefully for the teaching-learning process.
- ✓ Follow the order of the chapters as given in the contents because the concepts have been introduced in a graded manner to facilitate knowledge-building.
- ✓ Looking at the constructivism approach of the textbook, it is compulsory to carry the textbook in the class for teachers and students both.
- ✓ The chapters in the present book have been prepared for constructivist and activity-based teaching. Please do not teach the lessons in the book by just reading them aloud.
- ✓ The number of periods required for each chapter has been given a thought. Abstract concepts are difficult to follow and therefore you are expected to use the given number of periods fully. Do not finish the chapter in short. This will help the students to assimilate the content without feeling the 'burden of learning'.
- ✓ Please refer to textbooks of earlier classes before teaching this textbook.
- ✓ Like other social sciences, geographical concepts too are not easy to understand. Major concepts of geography have a scientific base and they deal with abstractions. Encourage group work, learning through each other's help, etc. Facilitate peer learning as much as possible by reorganizing the class structure frequently.
- ✓ Please plan carefully and independently for the activities in each chapter. Please do not teach without planning.
- ✓ Please use the geographical teaching aids in the laboratories as required for the appropriate understanding of the subject. It is necessary to use the globe, the maps, atlases, websites and weblinks.
- ✓ All chapters should be taught by giving appropriate time.
- ✓ Participation of all the students is very necessary in the teaching-learning interactions and processes.
- ✗ **Do not use the boxes titled 'Do you know?' for evaluation.**
- ✓ Use thought-provoking, activity-oriented, open-ended, multiple choice questions for evaluation. Some examples are given at the end of the chapters in the 'Exercises'. They follow the question paper pattern.
- ✓ It is necessary to access the supplementary material wherever specific website or use of Internet is indicated. Use QR Code given in the textbook. You as well as the students are expected to use these references. These references will surely help you to go beyond the textbook. Please bear in mind that extra reading is always helpful for understanding any subject in depth.
- ✓ It is compulsory to teach one example in a practical and get another one done from the students.
- ✓ Students have to carry out surveying by an App. The teachers will also have to download this App and register themselves too.
- ✓ The data collected through survey has to be analysed on the basis of study of various correlations, deviation, changes and trends in statistical methods and importance in Human Geography.



## - CONTENTS -

Sr. No.	Name of the Chapters	Page No.	Proposed Periods
1.	Population : Part - 1	1-11	18
2.	Population : Part - 2	12-20	16
3.	Human Settlements and Land Use	21-31	14
4.	Primary Economic Activities	32-41	15
5.	Secondary Economic Activities	42-54	16
6.	Tertiary Economic Activities	55-65	14
7.	Region and Regional Development	66-74	14
8.	Geography : Nature and Scope	75-81	13
*	World Maps for Reference	82 and 83	---
9.	Practicals	84-111	8 for each practical

**S.O.I. Note :** The following foot notes are applicable : (1) © Government of India, Copyright : 2020. (2) The responsibility for the correctness of internal details rests with the publisher. (3) The territorial waters of India extend into the sea to a distance of twelve nautical miles measured from the appropriate base line. (4) The administrative headquarters of Chandigarh, Haryana and Punjab are at Chandigarh. (5) The interstate boundaries amongst Arunachal Pradesh, Assam and Meghalaya shown on this map are as interpreted from the "North-Eastern Areas (Reorganisation) Act. 1971," but have yet to be verified. (6) The external boundaries and coastlines of India agree with the Record/Master Copy certified by Survey of India. (7) The state boundaries between Uttarakhand & Uttar Pradesh, Bihar & Jharkhand and Chattisgarh & Madhya Pradesh have not been verified by the Governments concerned. (8) The spellings of names in this map, have been taken from various sources.

**DISCLAIMER Note :** All attempts have been made to contact copy righters (©) but we have not heard from them. We will be pleased to acknowledge the copy right holder (s) in our next edition if we learn from them.

**Front Cover and Back Cover :** Natural land cover had been shown in Std. XI textbook. We had studied Physical Geography last year. We are going to study Human Geography now in Std. XII. Considering this, the development of human land use on this natural land cover has been shown. Observation of the cover pages will help you while understanding the chapters in the book.

**Credits :** For land cover and land use maps - MAHARASHTRA REMOTE SENSING APPLICATION CENTRE (MRSAC) Nagpur.